

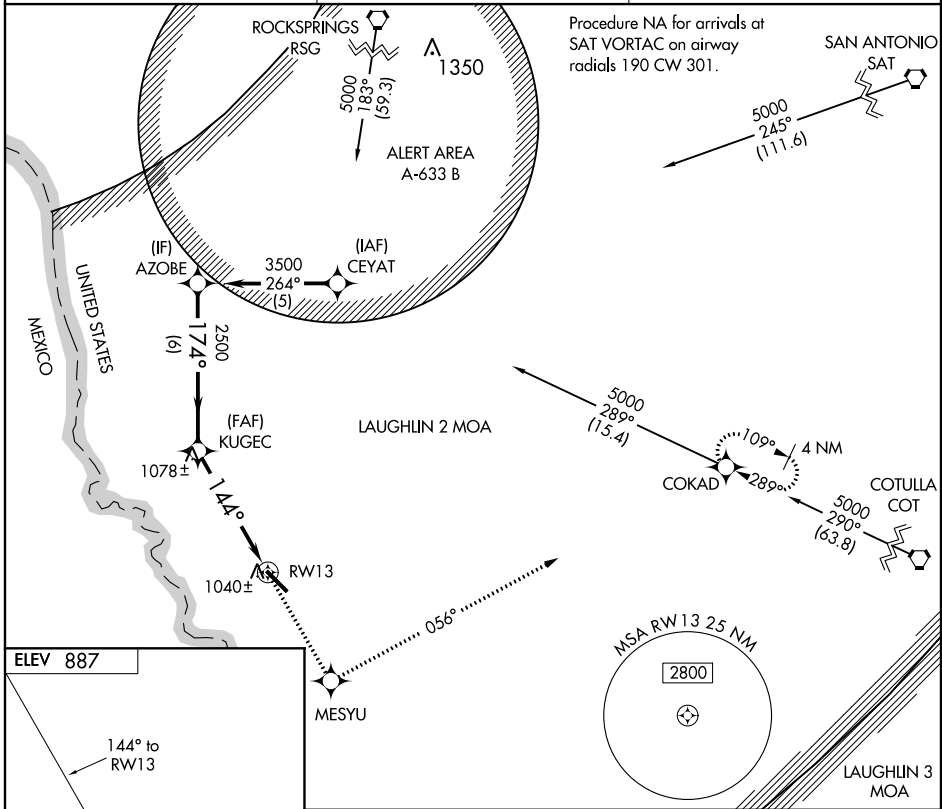
APP CRS 144°	Rwy Idg 5506
	TDZE 887
	Apt Elev 887

RNAV (GPS) RWY 13

EAGLE PASS/ MAVERICK COUNTY MEMORIAL INTL (5T9)

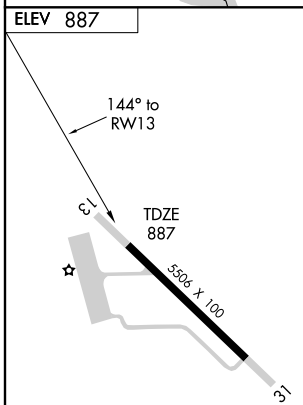
<p>▼ DME/DME RNP-0.3 NA. Visibility reduction by helicopters NA. Use Laughlin AFB altimeter setting; when not received, use Del Rio Intl altimeter setting.</p> <p>▲ NA</p>	<p>MISSED APPROACH: Climb to 4000 direct MESYU and via track 056° to COKAD and hold.</p>
---	--

LAUGHLIN AFB ATIS 114.4	DEL RIO APP CON 127.75 326.2	UNICOM 122.8 (CTAF) 0
-----------------------------------	--	---------------------------------

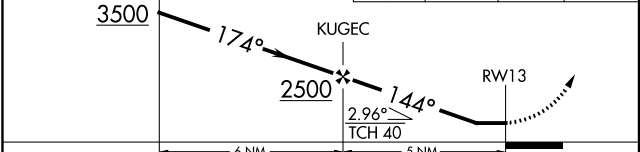


SC-3, 07 FEB 2013 to 07 MAR 2013

SC-3, 07 FEB 2013 to 07 MAR 2013



Procedure Turn NA	4000	MESYU	TRK 056°	COKAD
----------------------	------	-------	----------	-------



CATEGORY	A	B	C	D
LNAV MDA	1460-1	573 (600-1)	1460-1½ 573 (600-1½)	NA
CIRCLING	1500-1	613 (700-1)	1500-1¾ 613 (700-1¾)	NA