

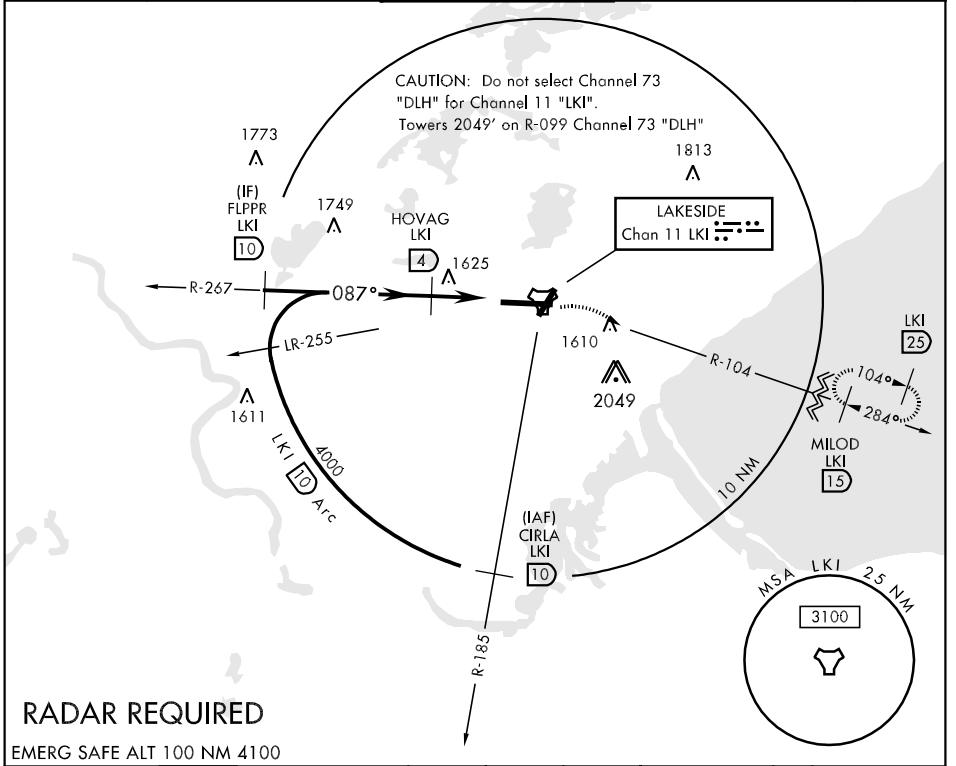
TACAN LKI Chan 11	APCH CRS 087°	Rwy Ldg 10,162 THRE 1428 Arpt Elev 1428
----------------------	------------------	---

AL-125 [USAF]

DULUTH INTL (KDLH)

<p>▼ * When ALS inop, increase CAT E vis to 1½ miles. ** Circling NA for CAT E SouthEast of runways 3 and 27.</p>	<p>ALSF-2 A</p>	<p>MISSED APPROACH: Climb to 2500 then climbing right turn to 4000 via LKI R-104 to MILOD (15 DME) and hold.</p>
---	---------------------	--

<p>ATIS 124.1 270.1</p>	<p>DULUTH APP CON 125.45 255.9</p>	<p>DULUTH TOWER 118.3 257.8</p>	<p>GND CON 121.9 348.6</p>	<p>ASR</p>
-----------------------------	--	-------------------------------------	--------------------------------	------------



NC-1, 07 FEB 2013 to 07 MAR 2013

NC-1, 07 FEB 2013 to 07 MAR 2013

