

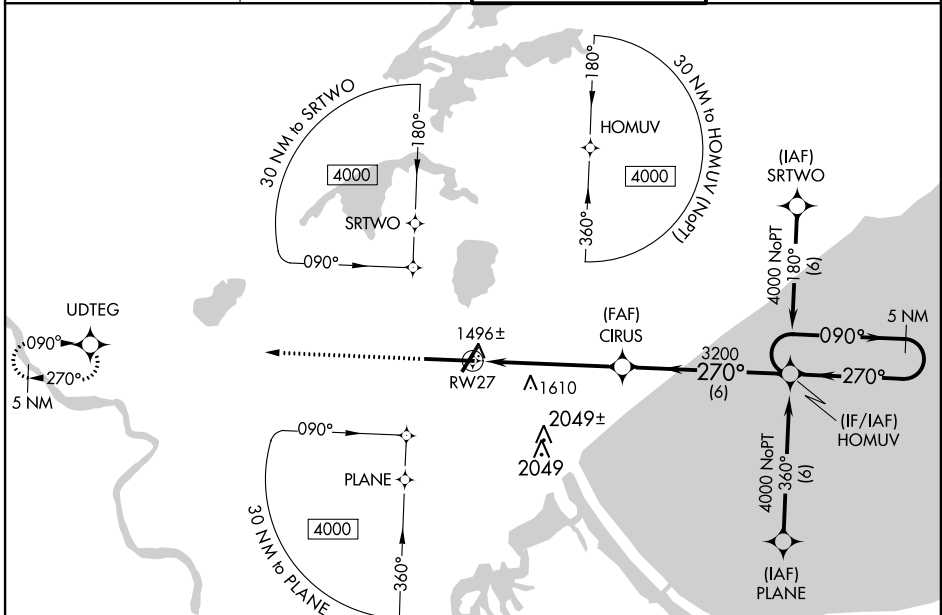
WAAS CH <b>50502</b> <b>W27A</b>	APP CRS <b>270°</b>	Rwy ldg <b>10162</b> TDZE <b>1421</b> Apt Elev <b>1428</b>
--	------------------------	--

# RNAV (GPS) RWY 27

DULUTH INTL (DLH)

<p><b>▽</b> DME/DME RNP-0.3 NA. Circling NA for Cat E SE of Rwy 3 and 27. For uncompensated Baro-VNAV systems, LNAV/VNAV NA below -17°C (2°F) or above 46°C (115°F).</p> <p><b>▲</b> ASR For inop MALS, increase LPV Cat E visibility to RVR 4000, LNAV/VNAV Cat E visibility to RVR 6000, and LNAV Cat E visibility to 1¾.</p>	<p>MALS</p>	<p>MISSED APPROACH: Climb to 3300 direct UDTEG and hold.</p>
---	-------------	--

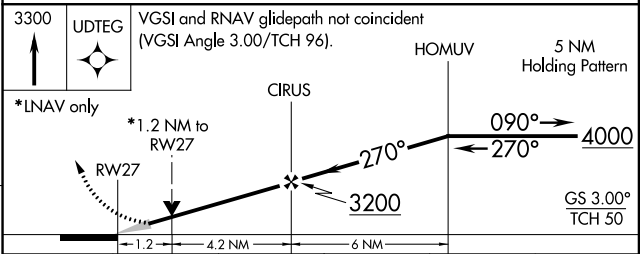
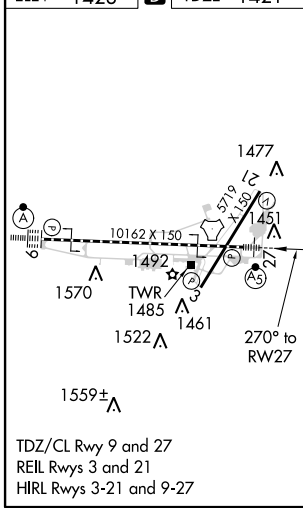
<p>ATIS <b>124.1 270.1</b></p>	<p>DULUTH APP CON <b>125.45 255.9</b></p>	<p>DULUTH TOWER <b>118.3 257.8</b></p>	<p>GND CON <b>121.9 348.6</b></p>
------------------------------------	---	--	---------------------------------------



NC-1, 07 FEB 2013 to 07 MAR 2013

NC-1, 07 FEB 2013 to 07 MAR 2013

ELEV 1428	<b>D</b>	TDZE 1421
-----------	----------	-----------



CATEGORY	A	B	C	D	E
LPV DA	1671/24 250 (300-½)				
LNAV/VNAV DA	1746/40 325 (400-¾)				
LNAV MDA	1900/24	479 (500-½)	1900/40 479 (500-¾)	1900/50 479 (500-1)	1900/60 479 (500-1½)
CIRCLING	1920-1	492 (500-1)	1920-1½ 492 (500-1½)	1980-2 552 (600-2)	2060-2¼ 632 (700-2¼)