

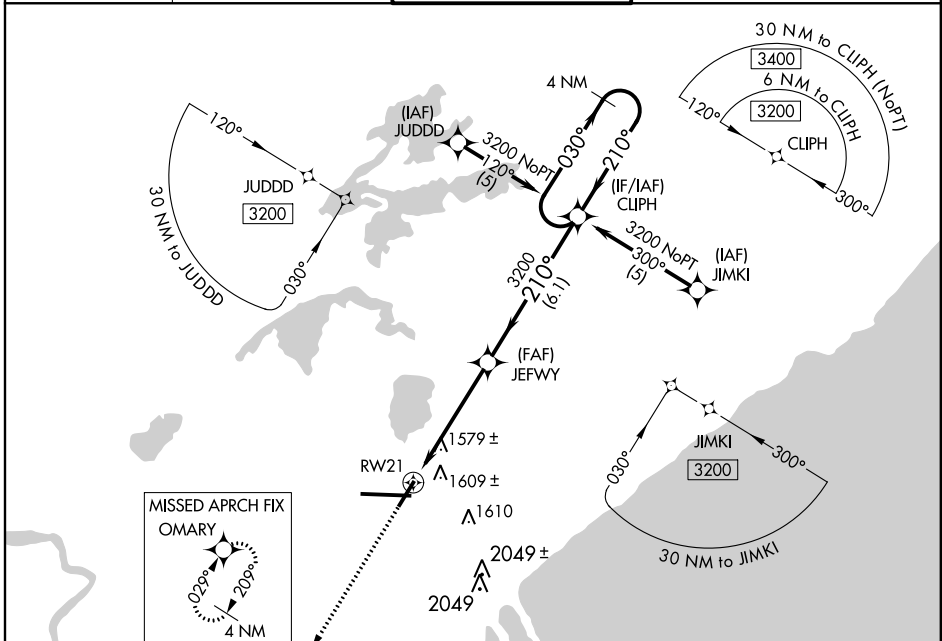
WAAS CH 40114 W21A	APP CRS 210°	Rwy Idg 5719
		TDZE 1420
		Apt Elev 1428

RNAV (GPS) RWY 21

DULUTH INTL (DLH)

ASR	For uncompensated Baro-VNAV systems, LNAV/VNAV NA below -17°C (2°F) or above 46°C (114°F). DME/DME RNP-0.3 NA. Visibility reduction by helicopters NA.	MISSED APPROACH: Climb to 3200 direct OMARY and hold.
-----	--	---

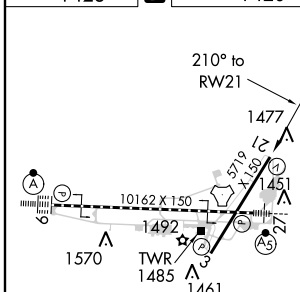
ATIS 124.1 270.1	DULUTH APP CON 125.45 255.9	DULUTH TOWER 118.3 257.8	GND CON 121.9 348.6
---------------------	--------------------------------	-----------------------------	------------------------



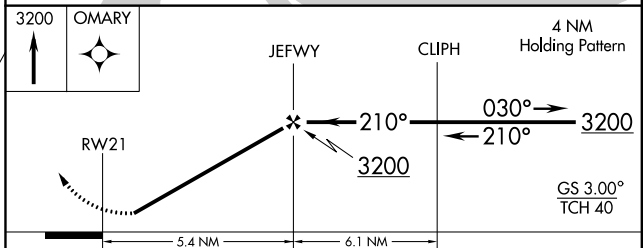
NC-1, 07 FEB 2013 to 07 MAR 2013

NC-1, 07 FEB 2013 to 07 MAR 2013

ELEV 1428	D	TDZE 1420
-----------	----------	-----------



TDZ/CL Rwy 9 and 27 REIL Rws 3 and 21 HIRL Rws 3-21 and 9-27
--



CATEGORY	A	B	C	D
LPV DA		1708-1	288 (300-1)	
LNAV/VNAV DA		1927-1¾	507 (500-1¾)	
LNAV MDA	1840-1	420 (500-1)	1840-1¼	420 (500-1¼)
CIRCLING	1920-1	492 (500-1)	1920-1½	1980-2 492 (500-1½) 552 (600-2)