

LOC I-JUD 108.7	APP CRS 270°	Rwy Idg 10162 TDZE 1421 Apt Elev 1428
---------------------------	------------------------	--

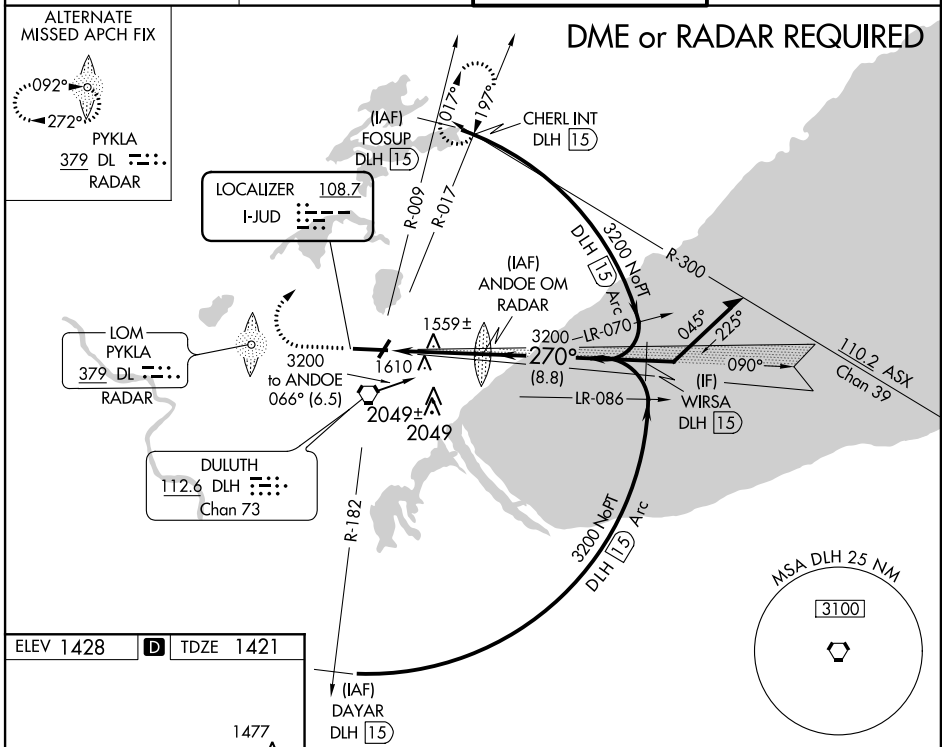
ILS or LOC RWY 27

DULUTH INTL (DLH)

⚠ Inop table does not apply to S-ILS 27. For inop MALS, increase S-LOC 27 Cat E visibility to 1 1/2 mile. Cat E Circling NA SE of ASR Rws 3 and 27. Autopilot coupled approach NA.

MALS MISSED APPROACH: Climb to 3000 then climbing right turn to 4500 via heading 060° and DLH VORTAC R-017 to CHERL INT/DLH 15 DME and hold.

ATIS 124.1 270.1	DULUTH APP CON 125.45 255.9	DULUTH TOWER 118.3 257.8	GND CON 121.9 348.6
----------------------------	---------------------------------------	------------------------------------	-------------------------------



ELEV 1428	D	TDZE 1421
-----------	----------	-----------

1477
1570
1492
1461
1522
1559±
270° 5.2 NM from FAF

TWR 1485
1451
1451
1451

101.62 x 150
5.2 NM

3000 4500 hdg 060° DLH R-017 CHERL INT ANDOE OM RADAR

Remain within 15 NM

090° 3200 3200

GS 3.00° TCH 85

5.2 NM

CATEGORY	A	B	C	D	E
S-ILS 27	1621/40	200 (200-3/4)	1651/40	230 (300-3/4)	
S-LOC 27	1820/24 399 (400-1/2)		1820/40 399 (400-3/4)	1820/50 399 (400-1)	
CIRCLING	1920-1 492 (500-1)		1920-1 1/2 492 (500-1 1/2)	1980-2 552 (600-2)	2060-2 1/4 632 (700-2 1/4)

NC-1, 07 FEB 2013 to 07 MAR 2013

NC-1, 07 FEB 2013 to 07 MAR 2013