


WAAS CH <b>93704</b> <b>W32A</b>	APP CRS <b>318°</b>	Rwy ldg THRE Apt Elev <b>8496</b> <b>382</b> <b>401</b>
--	------------------------	--

# RNAV (GPS) RWY 32

DOTHAN RGNL (DHN)

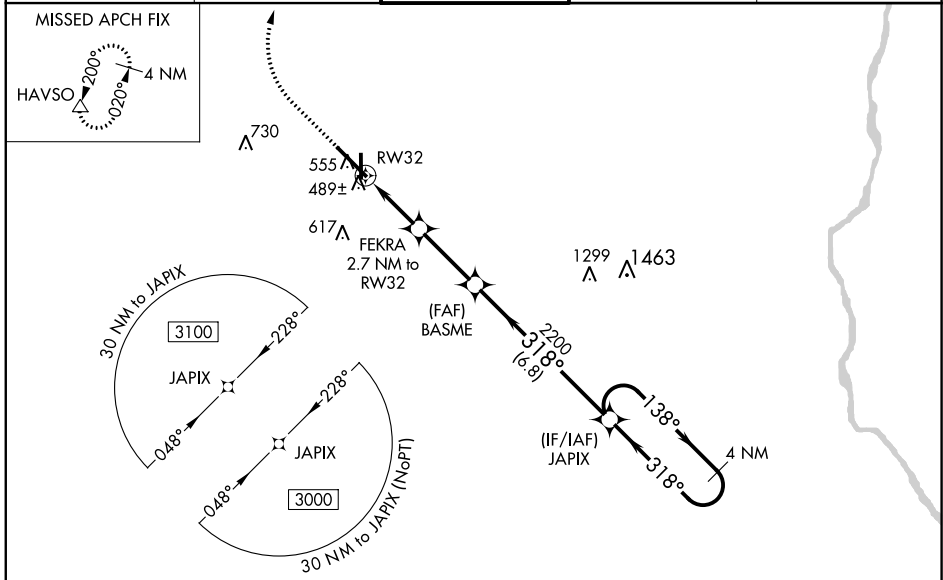
For uncompensated Baro-VNAV systems, LNAV/VNAV NA below -15°C (5°F) or above 41°C (105°F).  
DME/DME RNP-0.3 NA.

MALSRL

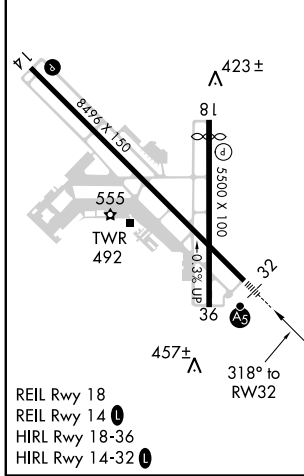


MISSED APPROACH: Climb to 900 then climbing right turn to 3000 direct HAVSO and hold.

ATIS <b>135.72</b>	CAIRNS APP CON * <b>125.4 327.125</b>	<b>DOTHAN TOWER*</b> <b>118.4 (CTAF) 0 257.6</b>	GND CON <b>121.7 348.6</b>	UNICOM <b>122.95</b>
-----------------------	--	---	-------------------------------	-------------------------



ELEV 401	<b>D</b> THRE 382
----------	-------------------



900	3000	HAVSO	4 NM Holding Pattern
*LNAV only	FEKRA 2.7 NM to RW32	BASME 2200	JAPIX
*1 NM to RW32	RW32	*1280	2200
1	1.8	2.8 NM	6.8 NM
138° →	← 318°	318°	3000
GS 3.00° TCH 57			
CATEGORY	A	B	C
LPV DA	582/24		200 (200-½)
LNAV/VNAV DA	670/24		288 (300-½)
LNAV MDA	740/24	358 (400-½)	740/30 358 (400-¾)
CIRCLING	860-1	459 (500-1)	860-1½ 960-2 459 (500-1½) 559 (600-2)

SE-4, 07 FEB 2013 to 07 MAR 2013

SE-4, 07 FEB 2013 to 07 MAR 2013