

WAAS CH 49118 W18A	APP CRS 183°	Rwy Idg THRE Apt Elev	5000 393 401
--	------------------------	-----------------------------	---

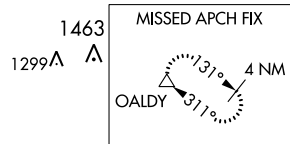
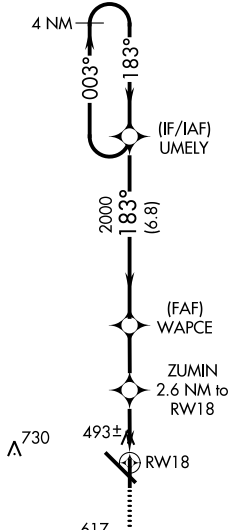
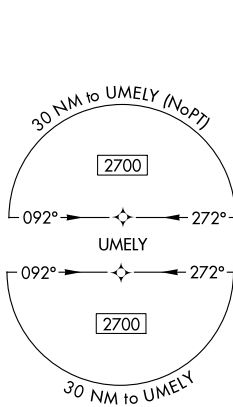
RNAV (GPS) RWY 18

DOTHAN RGNL (DHN)

▽ For uncompensated Baro-VNAV systems, LNAV/VNAV NA below -15°C (5°F) or above 41°C (105°F). DME/DME RNP-0.3 NA. Visibility reduction by helicopters NA.

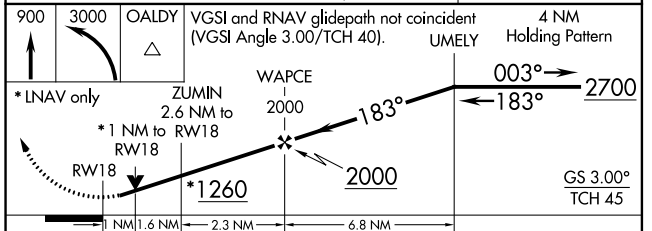
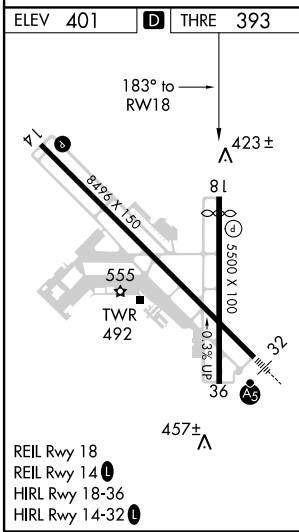
MISSED APPROACH: Climb to 900 then climbing left turn to 3000 direct OALDY and hold.

ATIS 135.72	CAIRNS APP CON * 125.4 327.125	DOTHAN TOWER * 118.4 (CTAF) 0 257.6	GND CON 121.7 348.6	UNICOM 122.95
-----------------------	--	--	-------------------------------	-------------------------



SE-4, 07 FEB 2013 to 07 MAR 2013

SE-4, 07 FEB 2013 to 07 MAR 2013



900	3000	OALDY	VGSI and RNAV glidepath not coincident (VGSI Angle 3.00/TCH 40).	4 NM Holding Pattern
*LNAV only		ZUMIN 2.6 NM to RWY 18	WAPCE 2000	2700
*1 NM to RWY 18		*1260	2000	GS 3.00° TCH 45
1 NM 1.6 NM		2.3 NM	6.8 NM	
CATEGORY	A	B	C	D
LPV DA		643-3/4	250 (300-3/4)	
LNAV/VNAV DA		674-7/8	281 (300-7/8)	
LNAV MDA		760-1	367 (400-1)	
CIRCLING	860-1	459 (500-1)	860-1 1/2 459 (500-1 1/2)	960-2 559 (600-2)