

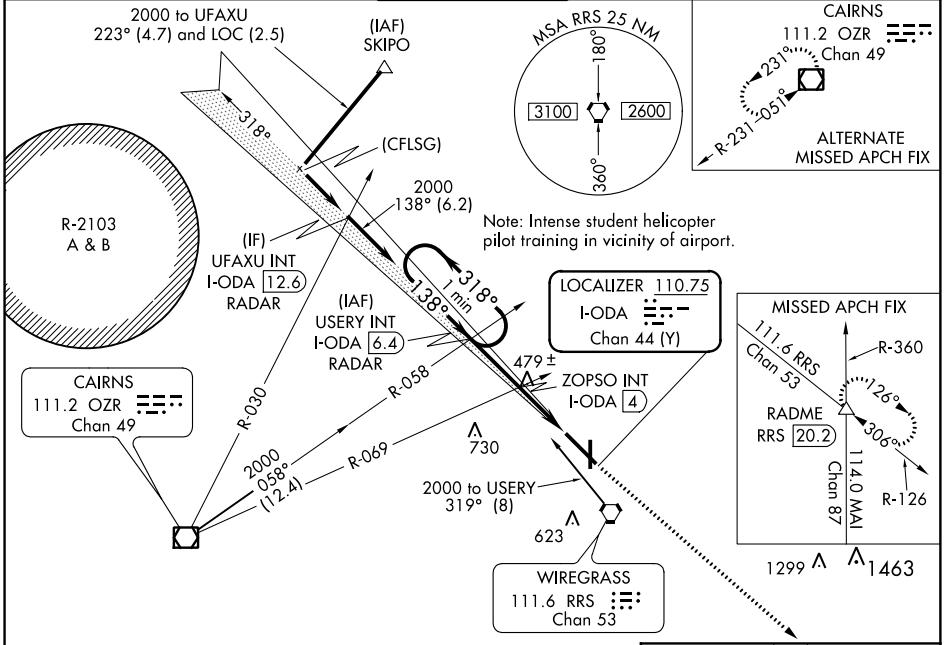
LOC/DME I-ODA <b>110.75</b> Chan <b>44 (Y)</b>	APP CRS <b>138°</b>	Rwy Idg <b>8496</b> THRE <b>401</b> Apt Elev <b>401</b>
--	------------------------	---

# ILS or LOC RWY 14

DOTHAN REGIONAL (DHN)

**MISSED APPROACH:** Climb to 3000 on heading 138° and on RRS VORTAC R-126 to RADME INT/RRS 20.2 DME and hold.

ATIS <b>135.72</b>	CAIRNS APP CON ★ <b>125.4 327.125</b>	DOTHAN TOWER ★ <b>118.4 (CTAF) 0 257.6</b>	GND CON <b>121.7 348.6</b>	UNICOM <b>122.95</b>
-----------------------	--	---	-------------------------------	-------------------------

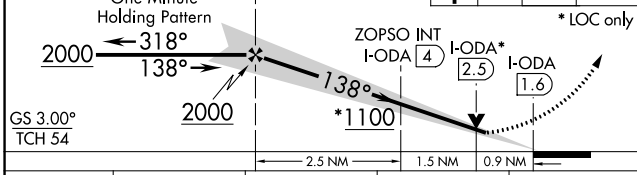


SE-4, 07 FEB 2013 to 07 MAR 2013

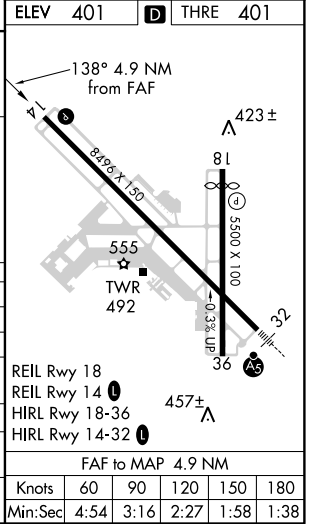
SE-4, 07 FEB 2013 to 07 MAR 2013

ELEV 401	THRE 401
----------	----------

VGSI and ILS glidepath not coincident (VGSI Angle 3.00/TCH 40).  
 USERY INT I-ODA (6.4) RADAR. Use I-ODA DME when on localizer course.  
 One Minute Holding Pattern at 2000 ft, heading 318°.



CATEGORY	A	B	C	D
S-ILS 14		601-¾	200 (200-¾)	
S-LOC 14	1100-1	699 (700-1)	1100-2	699 (700-2)
CIRCLING	1100-1	699 (700-1)	1100-2	1100-2¼ 699 (700-2¼)
ZOPSO FIX MINIMUMS (DUAL VOR RECEIVERS, DME, OR RADAR REQUIRED)				
S-LOC 14		740-1	339 (400-1)	
CIRCLING	860-1	459 (500-1)	860-1½ 459 (500-1½)	960-2 559 (600-2)



FAF to MAP 4.9 NM					
Knots	60	90	120	150	180
Min:Sec	4:54	3:16	2:27	1:58	1:38