

COPTER VOR RWY 36

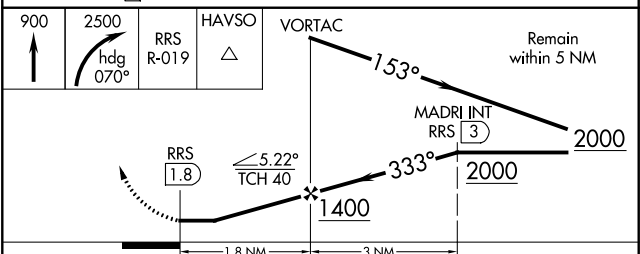
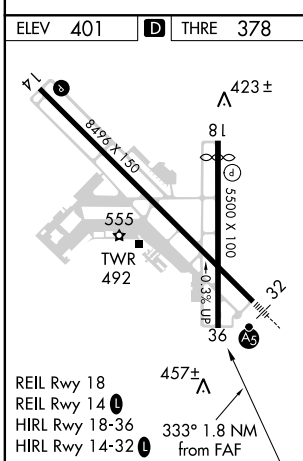
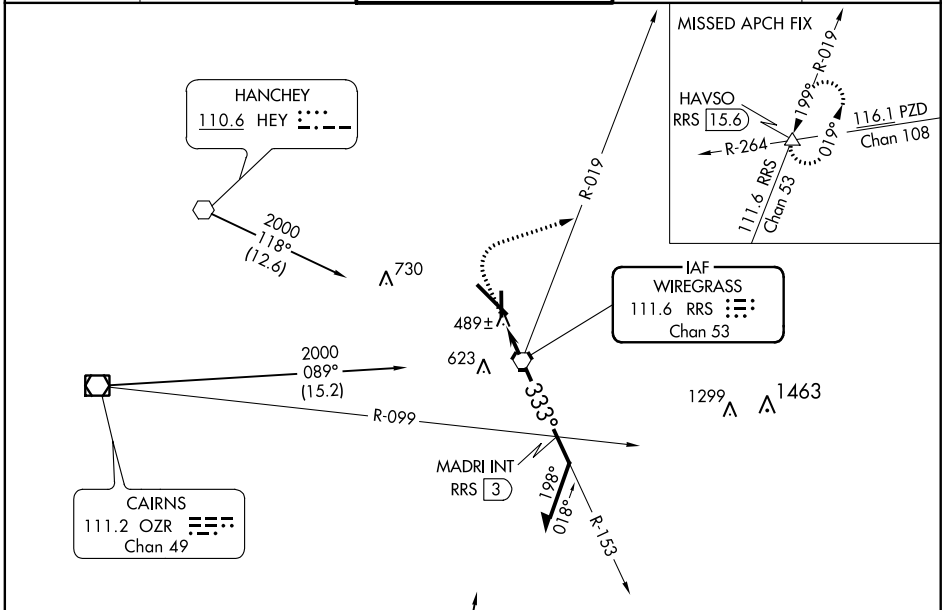
DOTHAN RGNL (DHN)

VORTAC RRS 111.6 Chan 53	APP CRS 333°	Rwy Idg THRE Apt Elev 5000 378 401
---------------------------------------	------------------------	--

Procedure NA at night. Visibility reduction by helicopters NA.
When local altimeter setting not received, use Cairns AAF altimeter setting and increase all MDA 60 feet.

MISSED APPROACH: Climb to 900 then climbing right turn to 2500 on heading 070° and on RRS VORTAC R-019 to HAVSO INT/RRS 15.6 DME and hold.

ATIS 135.72	CAIRNS APP CON * 125.4 327.125	DOTHAN TOWER * 118.4 (CTAF) 257.6	GND CON 121.7 348.6	UNICOM 122.95
-----------------------	--	---	-------------------------------	-------------------------



FAF to MAP 1.8 NM					
Knots	60	90	120	150	180
Min:Sec	1:48	1:12	0:54	0:43	0:36

CATEGORY	H-36	740-1 362 (400-1)
----------	------	-------------------

SE-4, 07 FEB 2013 to 07 MAR 2013

SE-4, 07 FEB 2013 to 07 MAR 2013