

DILLON, MONTANA

AL-121 (FAA)

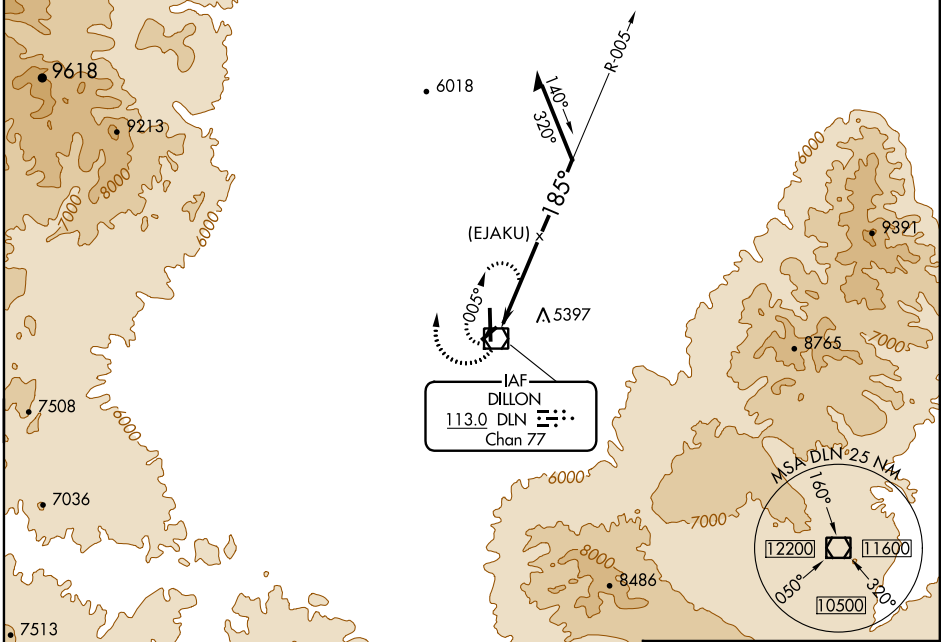
VOR or GPS-A DILLON (DLN)

VOR/DME DLN 113.0 Chan 77	APP CRS 185°	Rwy Idg TDZE N/A N/A Apt Elev 5241
--	------------------------	--

Procedure not authorized when Dillon altimeter setting not available.

MISSED APPROACH: Climb to 9000 in DLN VOR/DME holding pattern.

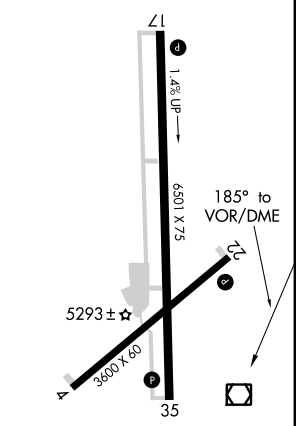
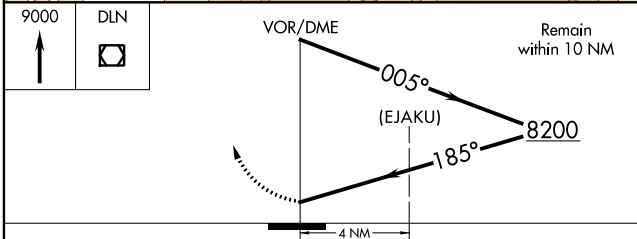
ASOS 135.225	SALT LAKE CENTER 132.4 338.3	UNICOM 122.8 (CTAF)
------------------------	--	-------------------------------



NW-1, 07 FEB 2013 to 07 MAR 2013

NW-1, 07 FEB 2013 to 07 MAR 2013

ELEV 5241



CATEGORY	A	B	C	D
CIRCLING	6700-1¼ 1462 (1500-1¼)	6700-1½ 1462 (1500-1½)	6700-3	1462 (1500-3)

MIRL Rwy 17-35 and 4-22

DILLON, MONTANA
Amdt 7 12096

45°15'N-112°33'W

DILLON (DLN) VOR or GPS-A