

RNAV (GPS) RWY 14

DICKINSON-THEODORE ROOSEVELT RGNL (DIK)

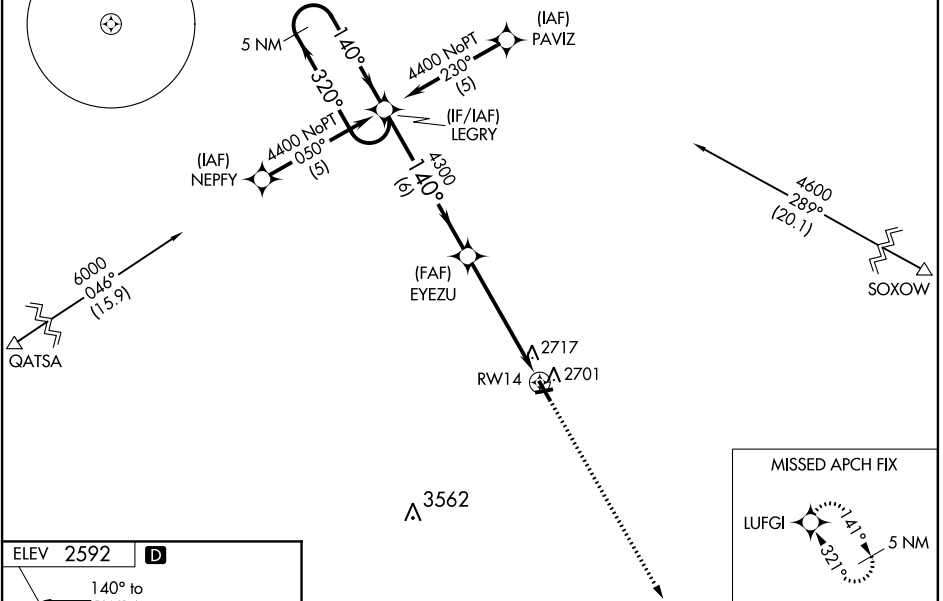
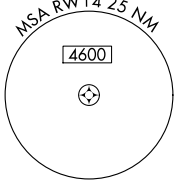
WAAS CH 56211 W14A	APP CRS 140°	Rwy Idg 6399
		TDZE 2589
		Apt Elev 2592

▼ DME/DME RNP-0.3 NA. Baro-VNAV NA below -20°C (-4°F).
▲ VDP and Baro/VNAV NA when using Bowman Muni altimeter setting.
 If local altimeter not received, use Bowman Muni altimeter setting and increase all DAs/MDAs 280 feet.

MISSED APPROACH: Climb to 5000 direct LUFGI and hold.

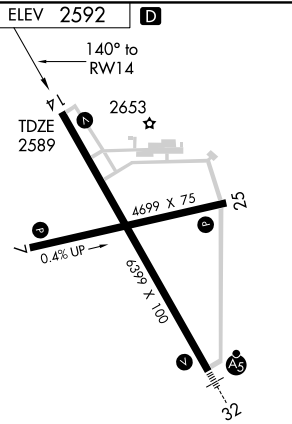
ASOS 118.375	MINNEAPOLIS CENTER 124.25 380.3	UNICOM 123.0 (CTAF) 0
------------------------	---	---------------------------------

Procedure NA for arrivals at QATSA on V2 westbound and at SOXOW on V2 eastbound.

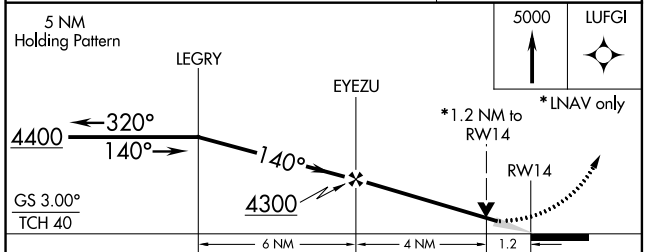


NC-1, 07 FEB 2013 to 07 MAR 2013

NC-1, 07 FEB 2013 to 07 MAR 2013



REIL Rwy 7, 14 and 25 **0**
 MIRL Rwy 7-25 and 14-32 **0**



CATEGORY	A	B	C	D
LPV DA	2840-1 251 (300-1)			
LNAV/VNAV DA	3060-1¼ 471 (500-1¼)			
LNAV MDA	3020-1	431 (500-1)	3020-1¼ 431 (500-1¼)	3020-1½ 431 (500-1½)
CIRCLING	3080-1¼ 488 (500-1¼)			3160-2 568 (600-2)

RNAV (GPS) RWY 14