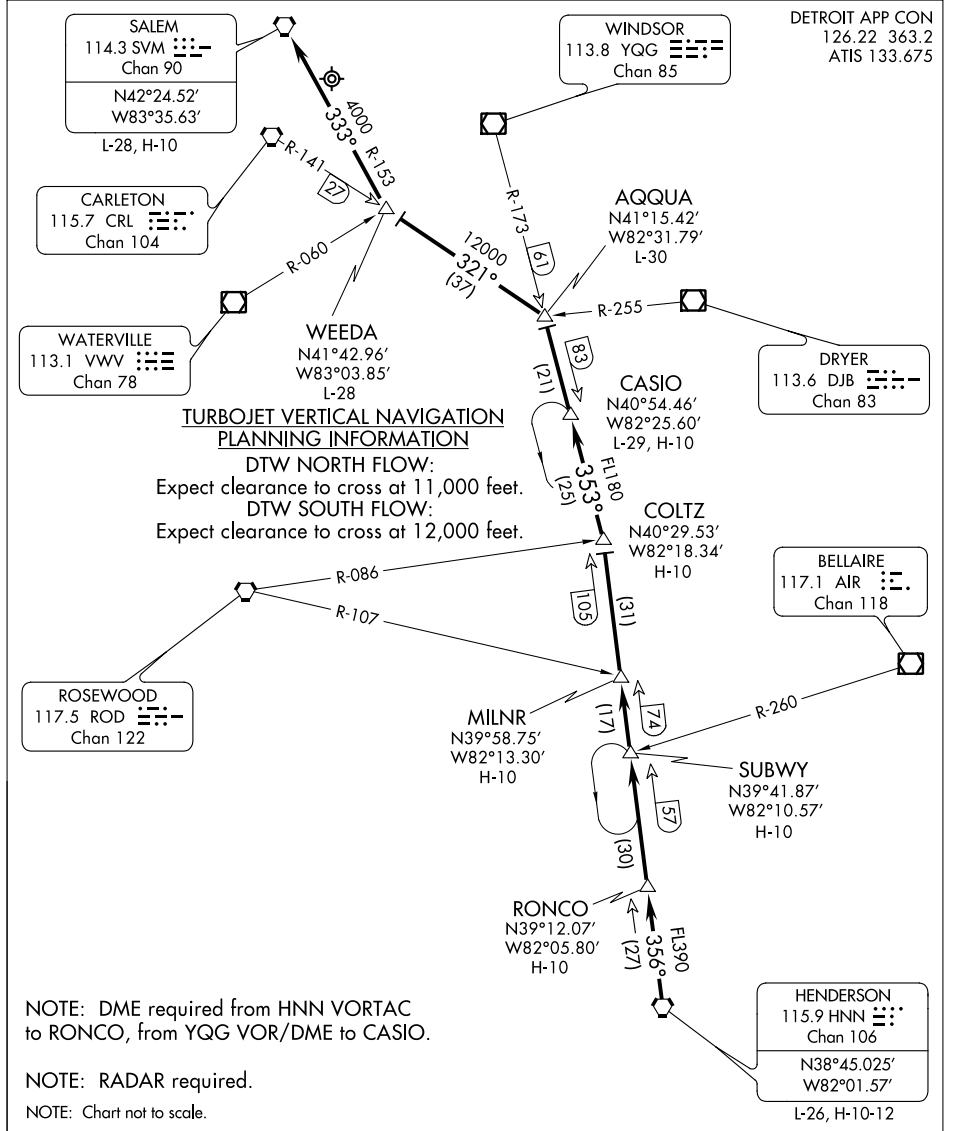


# WEEDA ONE ARRIVAL

ST-119 (FAA)

DETROIT, MICHIGAN

DETROIT APP CON  
126.22 363.2  
ATIS 133.675



EC-1, 07 FEB 2013 to 07 MAR 2013

EC-1, 07 FEB 2013 to 07 MAR 2013

## ARRIVAL ROUTE DESCRIPTION

From over HNN VORTAC via R-356 to COLTZ INT (MEA FL390), then via YQG R-173 to AQQUA INT (MEA FL180), then via CRL R-141 TO WEEDA INT (MEA 12000) then via SVM R-153 TO SVM VORTAC (MEA 4000). Expect radar vectors to final approach course.

# WEEDA ONE ARRIVAL