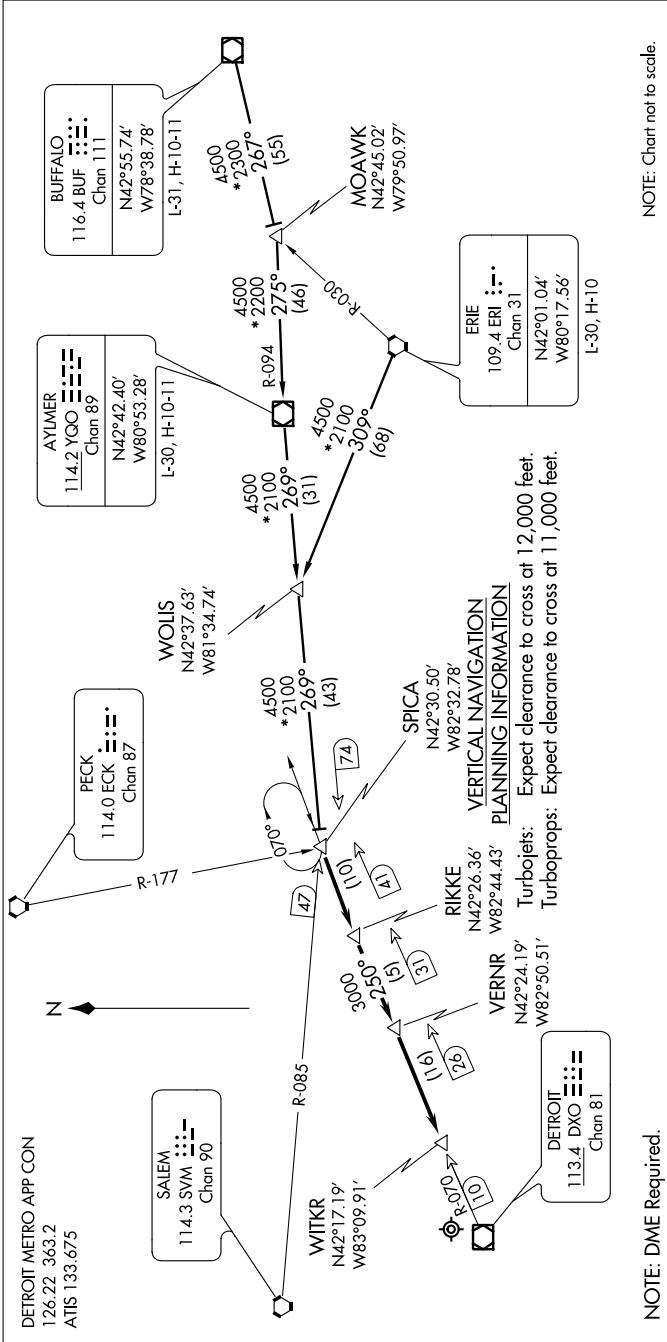


SPICA TWO ARRIVAL

EC-1, 07 FEB 2013 to 07 MAR 2013



NOTE: Chart not to scale.

AYLMER TRANSITION (YGO.SPICA2): From over YGO VOR/DME via YGO R-269 to SPICA 74 DME FIX. Thence

BUFFALO TRANSITION (BUF.SPICA2): From over BUF VOR/DME via BUF R-267 to MOAWK INT, then via YGO R-094 to YGO VOR/DME, then via YGO R-269 to SPICA 74 DME FIX. Thence

ERIE TRANSITION (ERI.SPICA2): From over ERI VORTAC via ERI R-309 to WOLIS INT, then via YGO R-269 to SPICA 74 DME FIX. Thence

. From over SPICA 74 DME FIX:
Landing Runway 21L/R or 22L/R via DXO R-070 to VERNR 26 DME FIX. Thence
Landing Runway 3L/R or 4L/R via DXO R-070 to WITKR 10 DME FIX. Thence
. Expect radar vectors to final approach course.