

WAAS CH 63004 W04A	APP CRS 035°	Rwy Idg 12003 TDZE 638 Apt Elev 645
--	------------------------	--

RNAV (GPS) RWY 4R

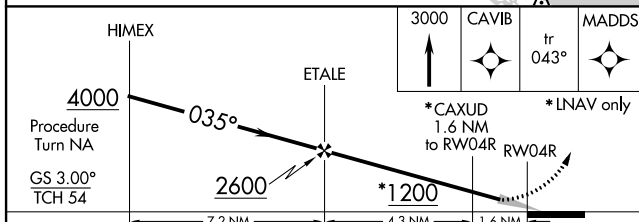
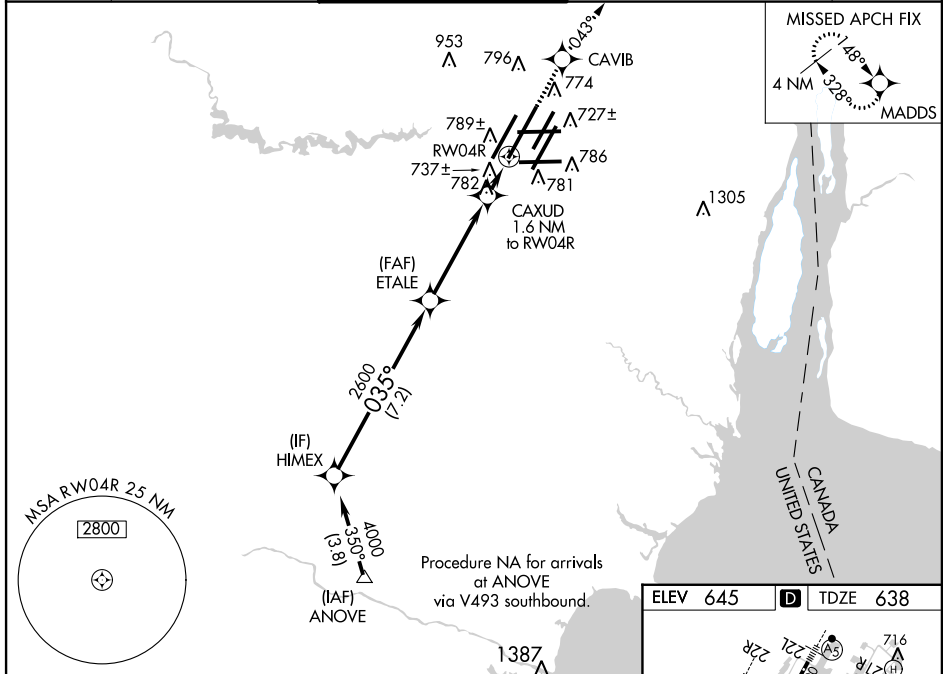
DETROIT METROPOLITAN WAYNE COUNTY (DTW)

▼ DME/DME RNP-0.3 NA. For inoperative ALSF-2, increase LPV all Cats visibility to RVR 5000, increase LNAV Cat D visibility to RVR 6000. For uncompensated Baro-VNAV systems, LNAV/VNAV NA below -16°C (4°F) or above 47°C (116°F). Simultaneous approach authorized with ILS or LOC Rwy 3R, ILS Rwy 3R (Cat II), ILS Rwy 3R (Cat III). LNAV procedure NA during simultaneous operations. Use of FD or AP providing RNAV track guidance required during simultaneous operations.

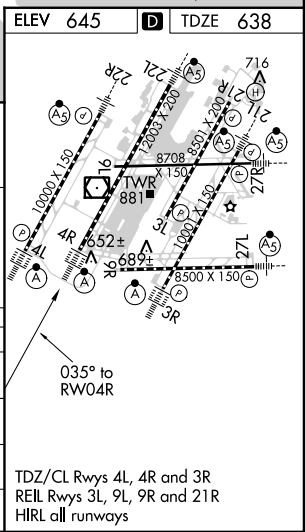
ALSF-2

MISSED APPROACH: Climb to 3000 direct CAVIB and via 043° track to MADDS and hold.

ATIS 133.675	DETROIT APP CON 124.05 363.2 (WEST) 125.15 363.2 (EAST)	METRO TOWER 135.0 317.725 (WEST) 118.4 317.725 (EAST)	GND CON 121.8 (NW) 119.45 (NE) 132.72 (SW) 119.25 (SE)	CINC DEL 120.65
------------------------	---	---	--	---------------------------



CATEGORY	A	B	C	D
LPV DA		964/24	326 (400-½)	
LNAV/VNAV DA		1015/40	377 (400-¾)	
LNAV MDA	1060/24	422 (500-½)	1060/40 422 (500-¾)	1060/50 422 (500-1)
CIRCLING	1200-1	555 (600-1)	1200-1½ 555 (600-1½)	1200-2 555 (600-2)



EC-1, 07 FEB 2013 to 07 MAR 2013

EC-1, 07 FEB 2013 to 07 MAR 2013