

WAAS CH 77520 W04A	APP CRS 035°	Rwy ldg 10000 TDZE 645 Apt Elev 645
--	------------------------	--

RNAV (GPS) RWY 4L

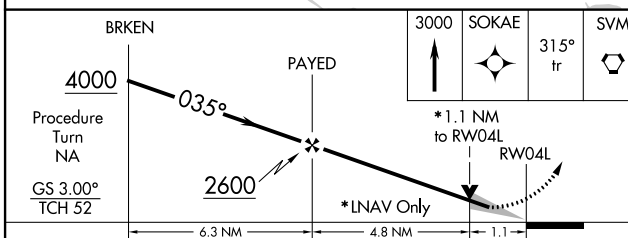
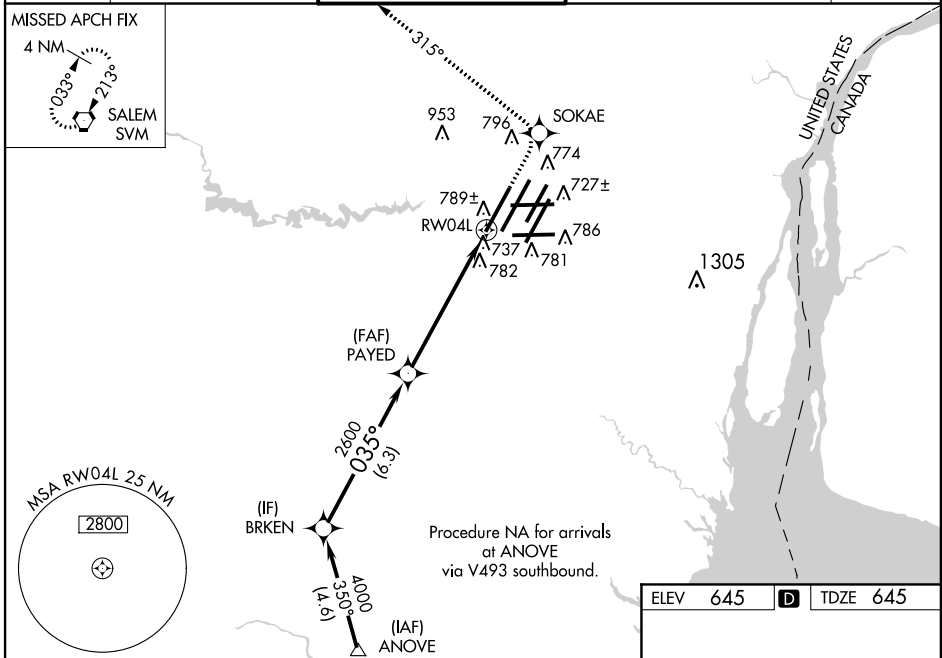
DETROIT METROPOLITAN WAYNE COUNTY (DTW)

▽ For inoperative ALSF-2, increase LPV all Cats visibility to RVR 5000, increase LNAV Cat D visibility to RVR 6000. For uncompensated Baro-VNAV systems, LNAV/VNAV NA below -16°C (4°F) or above 47°C (116°F). DME/DME RNP-0.3 NA. Simultaneous approach authorized with ILS or LOC Rwy 3R, ILS Rwy 3R (Cat II), ILS Rwy 3R (Cat III). LNAV procedure NA during simultaneous operations. Use of FD or AP providing RNAV track guidance required during simultaneous operations.

ALSF-2

MISSED APPROACH:
Climb to 3000 direct SOKAE and via 315° track to SVM
VORTAC and hold.

ATIS 133.675	DETROIT APP CON 124.05 363.2 (WEST) 125.15 363.2 (EAST)	METRO TOWER 135.0 317.725 (WEST) 118.4 317.725 (EAST)	GND CON 121.8 (NW) 119.45 (NE) 132.72 (SW) 119.25 (SE)	CLNC DEL 120.65
------------------------	---	---	--	---------------------------



ELEV 645	D	TDZE 645
----------	----------	----------

035° to RWY 04L

TDZ/CL Rwy 4L, 4R and 3R
REIL Rwy 3L, 9L, 9R and 21R
HIRL all runways

EC-1, 07 FEB 2013 to 07 MAR 2013

EC-1, 07 FEB 2013 to 07 MAR 2013