


| | | |
|--|------------------------|--|
| WAAS CH 61304 W03A | APP CRS 035° | Rwy Idg 10001 TDZE 633 Apt Elev 645 |
|--|------------------------|--|

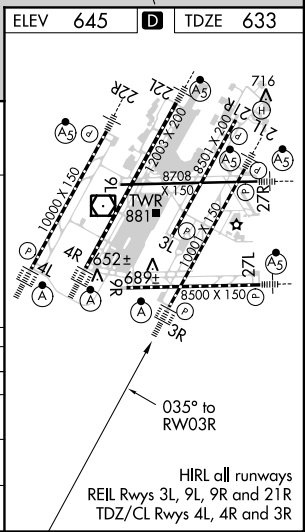
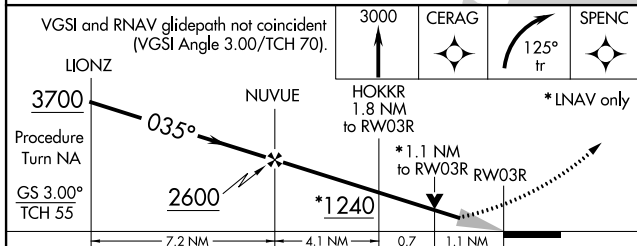
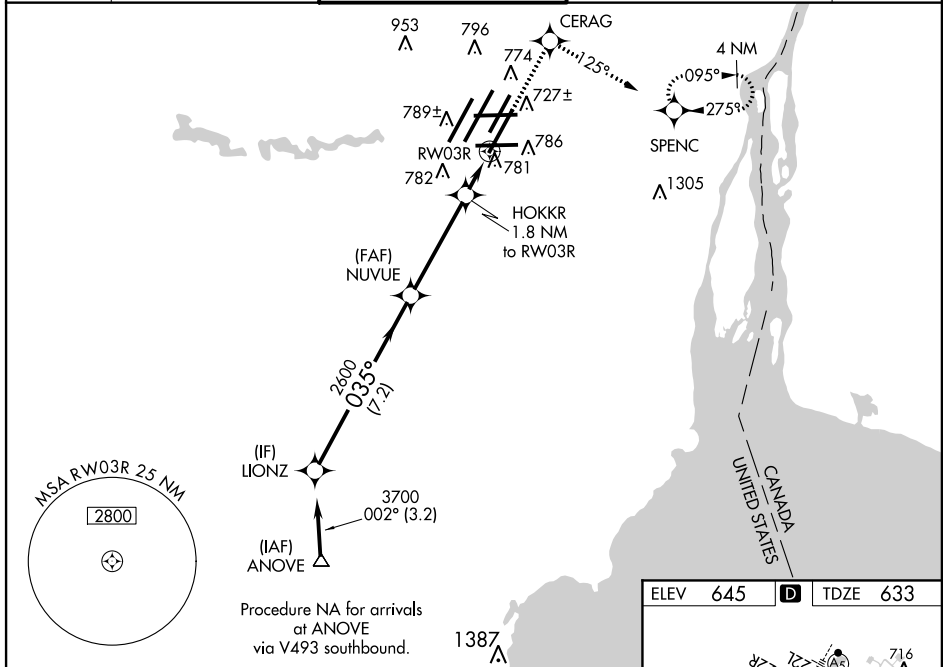
RNAV (GPS) RWY 3R

DETROIT METROPOLITAN WAYNE COUNTY (DTW)

▽ For inoperative ALSF-2, increase LPV all Cats visibility to RVR 5000. For uncompensated Baro-VNAV systems, LNAV/VNAV NA below -16°C (4°F) or above 47°C (116°F). DME /DME RNP-0.3 NA. Simultaneous approach authorized with ILS Y Rwy 4L, ILS Z or LOC Rwy 4L, ILS Z Rwy 4L (CAT II), ILS Z Rwy 4L (CAT III). LNAV procedure NA during simultaneous operations. Use of FD or AP providing RNAV track guidance required during simultaneous operations.

ALSF-2

MISSED APPROACH:
 Climb to 3000 direct CERAG and right turn via 125° track to SPENC and hold, continue climb-in-hold to 3000.

| | | | | |
|------------------------|---|---|--|---------------------------|
| ATIS 133.675 | DETROIT APP CON 124.05 363.2 (WEST) 125.15 363.2 (EAST) | METRO TOWER 135.0 317.725 (WEST) 118.4 317.725 (EAST) | GND CON 121.8 (NW) 119.45 (NE) 132.72 (SW) 119.25 (SE) | CLNC DEL 120.65 |
|------------------------|---|---|--|---------------------------|



| | | | | |
|--------------|-----------------------|----------------------------|---------------------|---|
| CATEGORY | A | B | C | D |
| LPV DA | 957/24 324 (400-1/2) | | | |
| LNAV/VNAV DA | 1031/40 398 (400-3/4) | | | |
| LNAV MDA | 1060/24 427 (500-1/2) | 1060/40 427 (500-3/4) | 1060/50 427 (500-1) | |
| CIRCLING | 1200-1 555 (600-1) | 1200-1 1/2 555 (600-1 1/2) | 1200-2 555 (600-2) | |

EC-1, 07 FEB 2013 to 07 MAR 2013

EC-1, 07 FEB 2013 to 07 MAR 2013