

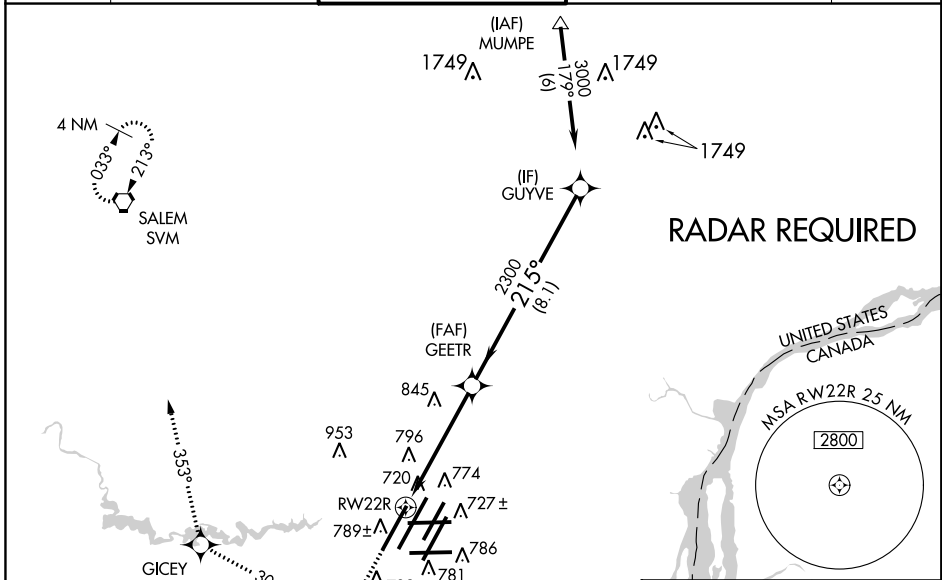
WAAS CH 82001 W22B	APP CRS 215°	Rwy Idg 10000 TDZE 642 Apt Elev 645
--	------------------------	--

RNAV (GPS) RWY 22R

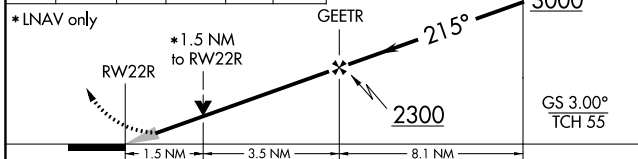
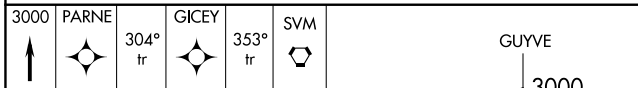
DETROIT METROPOLITAN WAYNE COUNTY (DTW)

<p>▼ For inoperative MALS, increase LPV all Cats visibility to RVR 5000. For uncompensated Baro-VNAV systems, LNAV/VNAV NA below -16°C (4°F) or above 47°C (116°F). DME/DME RNP-0.3 NA. Simultaneous approach authorized with ILS or LOC Rwy 21L. LNAV procedure NA during simultaneous operations. Use of FD or AP providing RNAV track guidance required during simultaneous operations.</p>	<p>MALS</p>	<p>MISSED APPROACH: Climb to 3000 direct PARNE and via 304° track to GICEY and via 353° track to SVM VORTAC and hold.</p>
---	--------------------	--

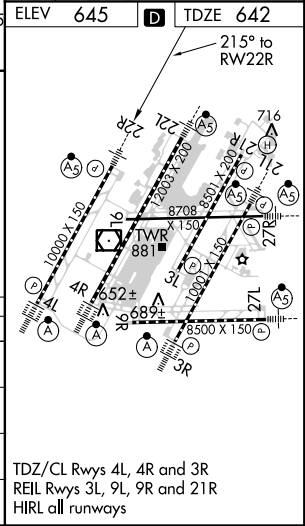
<p>ATIS 133.675</p>	<p>DETROIT APP CON 124.05 363.2 (WEST) 125.15 363.2 (EAST)</p>	<p>METRO TOWER 135.0 317.725 (WEST) 118.4 317.725 (EAST)</p>	<p>GND CON 121.8 (NW) 119.45 (NE) 132.72 (SW) 119.25 (SE)</p>	<p>CLNC DEL 120.65</p>
--------------------------------	--	--	---	-----------------------------------



ELEV 645	TDZE 642
----------	----------



CATEGORY	A	B	C	D
LPV DA		892/24	250 (300-½)	
LNAV/VNAV DA		1006/40	364 (400-¾)	
LNAV MDA	1160/24	518 (600-½)	1160/50 518 (600-1)	1160/60 518 (600-1¼)
CIRCLING	1200-1	555 (600-1)	1200-1½ 555 (600-1½)	1200-2 555 (600-2)



EC-1, 07 FEB 2013 to 07 MAR 2013

EC-1, 07 FEB 2013 to 07 MAR 2013