


WAAS CH 81820	APP CRS 215°	Rwy Idg 10001 THRE 632 Apt Elev 645
-------------------------	------------------------	--

RNAV (GPS) RWY 21L

DETROIT METROPOLITAN WAYNE COUNTY (DTW)

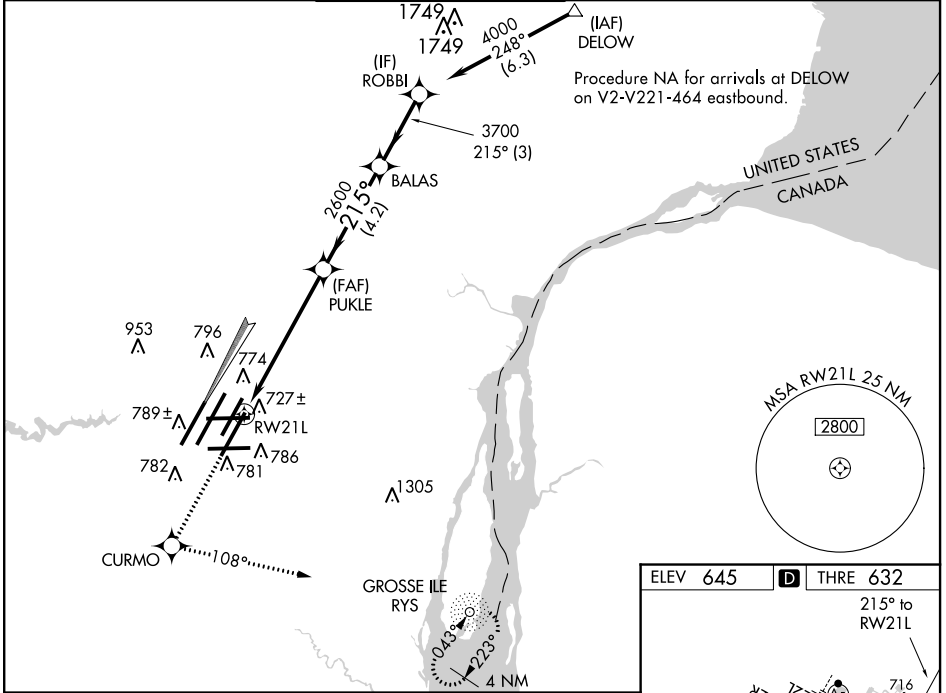
▼ For uncompensated Baro-VNAV systems, LNAV/VNAV NA below -16°C (4°F) or above 47°C (116°F). DME/DME RNP-0.3 NA. For inoperative MALS/R increase LPV all Cats visibility to RVR 4500, LNAV/VNAV all Cats visibility to 1 3/8 miles, LNAV Cats A and B visibility to RVR 5500 and LNAV Cats C and D visibility to 1 3/8 miles. Simultaneous approach authorized with ILS Y Rwy 22R and ILS Z or LOC Rwy 22R. LNAV procedure NA during simultaneous operations. Use of FD or AP providing RNAV track guidance required during simultaneous operations.

MALS/R



MISSED APPROACH: Climb to 3000 direct CURMO and left turn on track 108° to RYS NDB and hold.

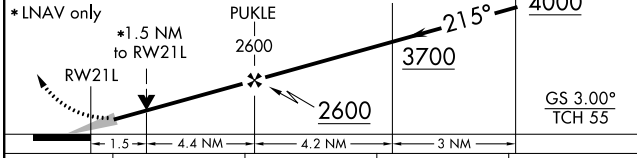
ATIS 133.675	DETROIT APP CON 124.05 363.2 (WEST) 125.15 363.2 (EAST)	METRO TOWER 135.0 317.725 (WEST) 118.4 317.725 (EAST)	GND CON 121.8 (NW) 119.45 (NE) 132.72 (SW) 119.25 (SE)	CLNC DEL 120.65
------------------------	---	---	--	---------------------------



3000 CURMO (↑) RYS (○) tr 108°

*LNAV only

VGSI and RNAV glidepath not coincident (VGSI Angle 3.00/TCH 80).



CATEGORY	A	B	C	D
LPV DA		922/24	290 (300-1/2)	
LNAV/VNAV DA		1118/50	486 (500-1)	
LNAV MDA	1180/24	548 (600-1/2)	1180/60	548 (600-1 1/4)
CIRCLING	1200-1	555 (600-1)	1200-1 1/2	1200-2
			555 (600-1 1/2)	555 (600-2)

ELEV 645 D THRE 632

215° to RWY 21L

TDZ/CL Rwy 4L, 4R and 3R
REIL Rwy 3L, 9L, 9R and 21R
HIRL all runways

EC-1, 07 FEB 2013 to 07 MAR 2013

EC-1, 07 FEB 2013 to 07 MAR 2013