

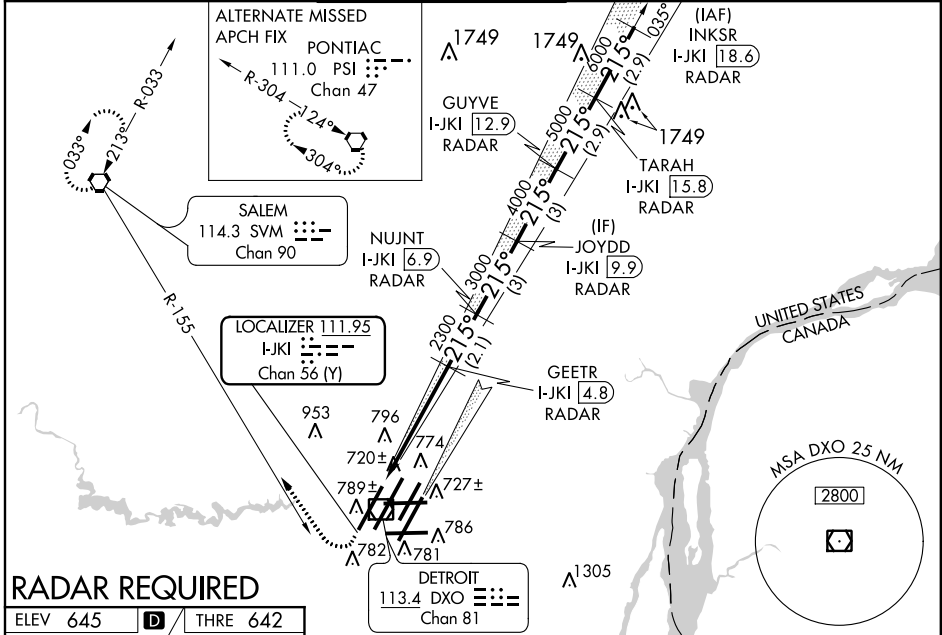
LOC/DME I-JKI 111.95 Chan 56 (Y)	APP CRS 215°	Rwy ldg THRE Apt Elev 10,000 642 645
---	------------------------	--

ILS Z or LOC RWY 22R

DETROIT METROPOLITAN WAYNE COUNTY (DTW)

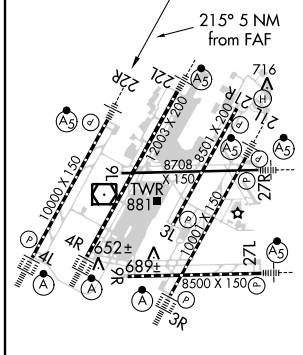
# RVR 1800 authorized with the use of FD or AP or HUD to DA. Simultaneous approach authorized with Rwy 21L. DME or Radar Required.	MALSR 	MISSED APPROACH: Climb to 1100 then climbing right turn to 3000 on heading 331° and SVM VORTAC R-155 direct SVM VORTAC and hold.

ATIS 133.675	DETROIT APP CON 124.05 363.2 (WEST) 125.15 363.2 (EAST)	METRO TOWER 135.0 317.725 (WEST) 118.4 317.725 (EAST)	GND CON 121.8 (NW) 119.45 (NE) 132.72 (SW) 119.25 (SE)	CLNC DEL 120.65
------------------------	---	---	--	---------------------------



RADAR REQUIRED

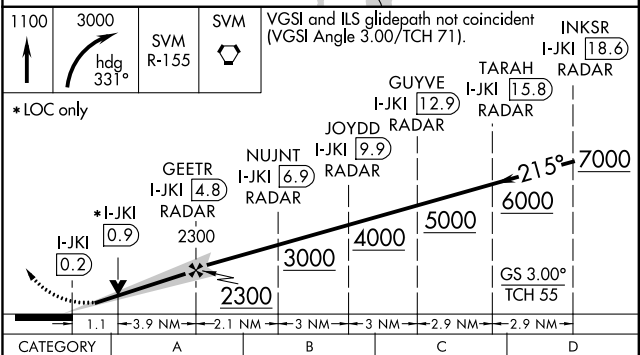
ELEV 645	D	THRE 642
----------	----------	----------



TDZ/CL Rwy 4L, 4R and 3R
REIL Rwy 3L, 9L, 9R and 21R
HIRL all runways

FAF to MAP 5 NM

Knots	60	90	120	150	180
Min:Sec	5:00	3:20	2:30	2:00	1:40



CATEGORY	A	B	C	D
S-ILS 22R	#842/24 200 (200-½)			
S-LOC 22R	1060/24	418 (500-½)	1060/40	418 (500-¾)
CIRCLING	1200-1	555 (600-1)	1200-1½	1200-2
			555 (600-½)	555 (600-2)

EC-1, 07 FEB 2013 to 07 MAR 2013

EC-1, 07 FEB 2013 to 07 MAR 2013