

DETROIT, MICHIGAN

AL-119 (FAA)

12264

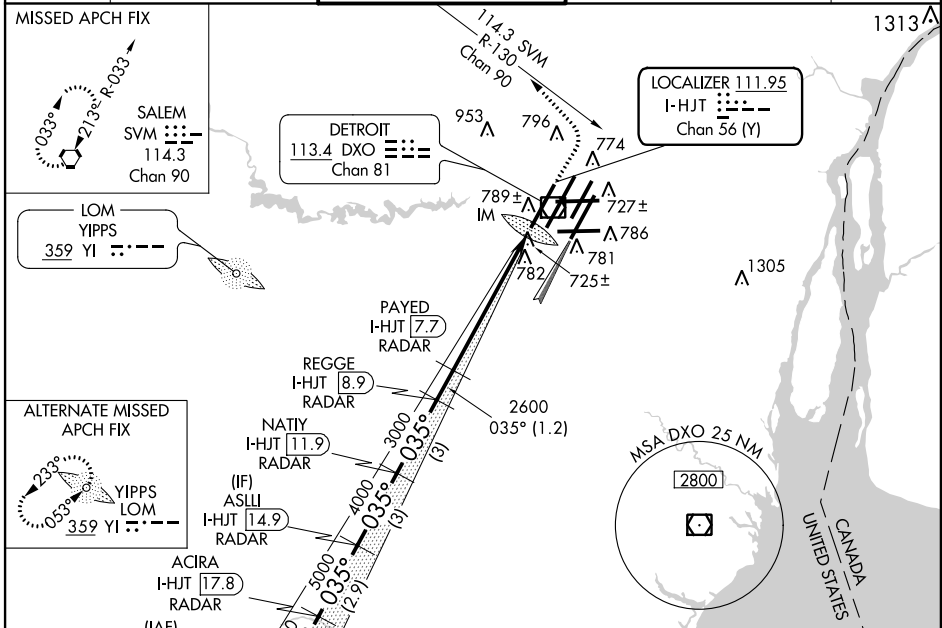
LOC/DME I-HJT 111.95 Chan 56 (Y)	APP CRS 035°	Rwy Idg TDZE Apt Elev	10000 645 645
---	------------------------	-----------------------------	--

ILS Z RWY 4L (CAT III)

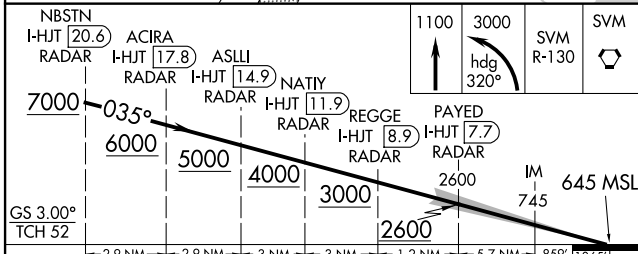
DETROIT METROPOLITAN WAYNE COUNTY (DTW)

<p>▼ DME or RADAR Required. Simultaneous approach authorized with Rwy 3R.</p>	<p>ALSF-2 </p>	<p>MISSED APPROACH: Climb to 1100 then climbing left turn to 3000 on heading 320° and SVM VORTAC R-130 to SVM VORTAC and hold.</p>
--	--------------------	--

<p>ATIS 133.675</p>	<p>DETROIT APP CON 124.05 363.2 (WEST) 125.15 363.2 (EAST)</p>	<p>METRO TOWER 135.0 317.725 (WEST) 118.4 317.725 (EAST)</p>	<p>GND CON 121.8 (NW) 119.45 (NE) 132.72 (SW) 119.25 (SE)</p>	<p>CLNC DEL 120.65</p>
--------------------------------	--	--	---	-----------------------------------

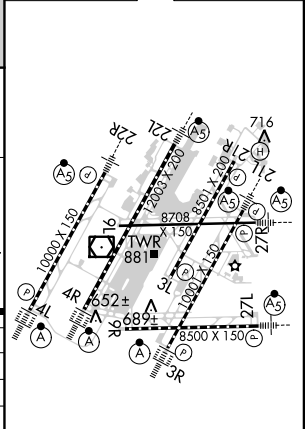


RADAR REQUIRED



CATEGORY	A	B	C	D
S-ILS 4L		CAT IIIa	RVR 07	
S-ILS 4L		CAT IIIb	RVR 06	
S-ILS 4L		CAT IIIc	NA	

ELEV 645 **D** TDZE 645



TDZ/CL Rwsy 4L, 4R and 3R
REIL Rwsy 3L, 9L, 9R and 21R
HIRL all runways

CATEGORY III ILS - SPECIAL AIRCREW & AIRCRAFT CERTIFICATION REQUIRED

DETROIT, MICHIGAN
Amdt 3B 26JUL12

DETROIT METROPOLITAN WAYNE COUNTY (DTW)
42°13'N-83°21'W

ILS Z RWY 4L (CAT III)

EC-1, 07 FEB 2013 to 07 MAR 2013

EC-1, 07 FEB 2013 to 07 MAR 2013