


LOC/DME I-BZB 111.75	APP CRS 212°	Rwy Idg THRE Apt Elev 10000 642 645
--------------------------------	------------------------	---

ILS Y PRM RWY 22R

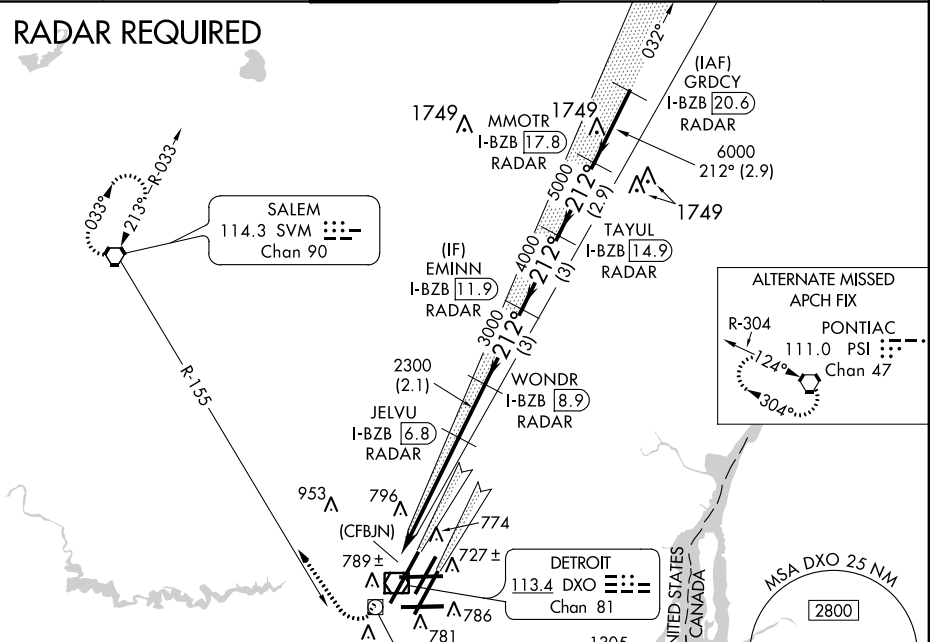
DETROIT METROPOLITAN WAYNE COUNTY (DTW)

▼ DME or Radar Required. Simultaneous close parallel approach authorized with ILS PRM Rwy 22L and ILS PRM Rwy 21L. Procedure not authorized when glideslope not available. Dual VHF Comm Required. See additional requirements on AAUP.

MALSR

MISSED APPROACH: Climb to 1100 then climbing right turn to 3000 on heading 331° and SVM VORTAC R-155 to SVM VORTAC and hold.

ATIS 133.675	DETROIT APP CON 124.05 363.2 (WEST) 125.15 363.2 (EAST)	METRO TOWER 128.125 317.725 PRM 127.05	GND CON 121.8 (NW) 119.45 (NE) 132.72 (SW) 119.25 (SE)	CINC DEL 120.65
------------------------	---	--	--	---------------------------

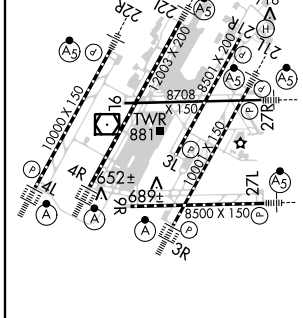
RADAR REQUIRED



EC-1, 07 FEB 2013 to 07 MAR 2013

EC-1, 07 FEB 2013 to 07 MAR 2013

ELEV 645	D	THRE 642
212°		



TDZ/CL Rwy 4L, 4R and 3R
REIL Rwy 3L, 9L, 9R and 21R
HIRL all runways

