


LOC/DME I-DWC 110.7 Chan 44	APP CRS 215°	Rwy Idg TDZE Apt Elev 12003 637 645
---	------------------------	---

ILS PRM RWY 22L (SIMULTANEOUS CLOSE PARALLEL)

DETROIT METROPOLITAN WAYNE COUNTY (DTW)

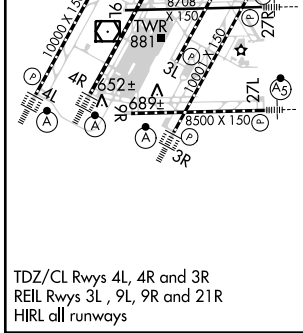
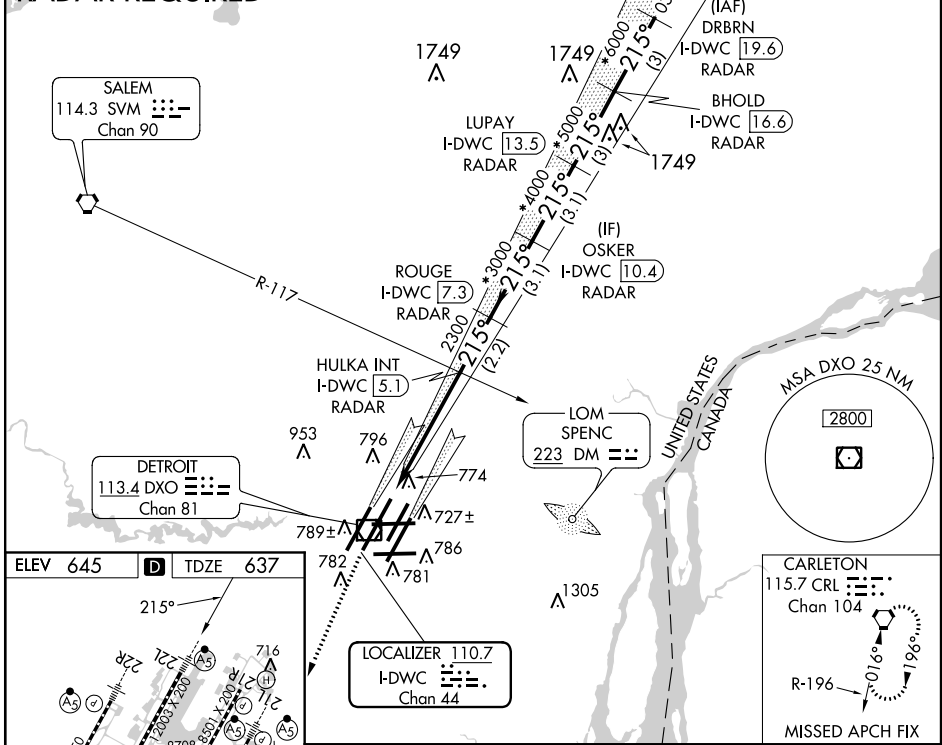
▼ RADAR or DME Required. Simultaneous close parallel approach authorized with ILS PRM Rwy 21L and ILS PRM Rwy 22R. Procedure NA when glideslope not available. Dual VHF Comm Required. See additional requirements on AAUP. #RVR 1800 authorized with the use of FD or AP or HUD to DA.

MALSR 

MISSED APPROACH:
Climb to 3000 direct
CRL VORTAC and hold.

ATIS 133.675	DETROIT APP CON 124.05 363.2 (WEST) 125.15 363.2 (EAST)	METRO TOWER 135.0 317.725 PRM 135.775	GND CON 121.8 (NW) 119.45 (NE) 132.72 (SW) 119.25 (SE)	CLNC DEL 120.65
------------------------	---	---	--	---------------------------

RADAR REQUIRED



ELEV 645	D	TDZE 637		
3000	CRL	*When assigned by ATC, intercept glidepath at 3000 or 4000 or 5000 or 6000.		DRBRN I-DWC 19.6
HULKA INT I-DWC 5.1	ROUGE I-DWC 7.3	LUPAY I-DWC 13.5	BHOLD I-DWC 16.6	
2300	2300	4000	5000	6000
GS 2.85°	TCH 57			
CATEGORY	A	B	C	D
S-ILS 22L	#837/24 200 (200-½)			

EC-1, 07 FEB 2013 to 07 MAR 2013

EC-1, 07 FEB 2013 to 07 MAR 2013