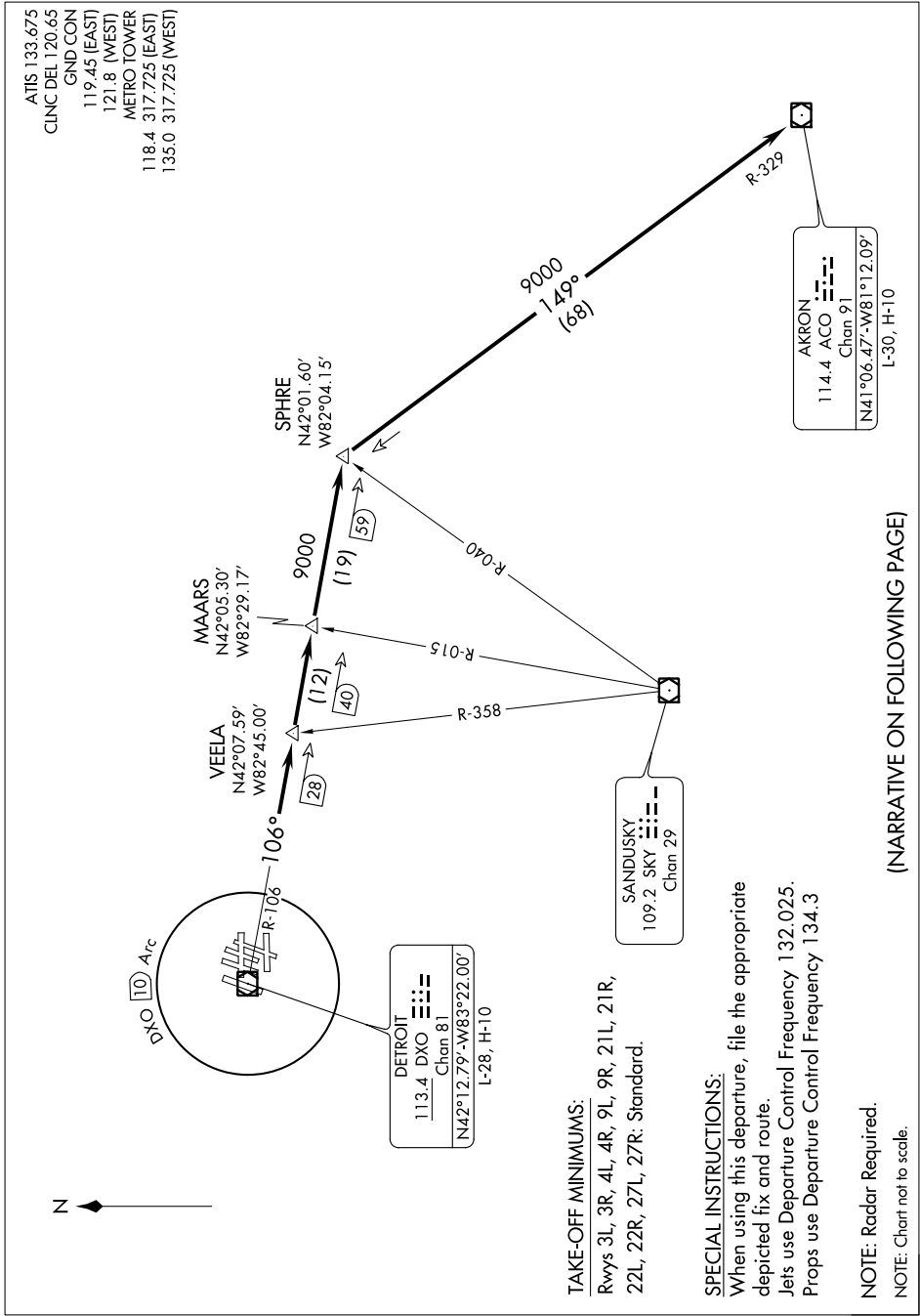


AKRON THREE DEPARTURE

ATIS 133.675
 CLNC DEL 120.65
 GND CON
 119.45 (EAST)
 121.8 (WEST)
 METRO TOWER
 118.4 317.725 (EAST)
 135.0 317.725 (WEST)

EC-1, 07 FEB 2013 to 07 MAR 2013



TAKE-OFF MINIMUMS:

Rwys 3L, 3R, 4L, 4R, 9L, 9R, 21L, 21R, 22L, 22R, 27L, 27R: Standard.

SPECIAL INSTRUCTIONS:

When using this departure, file the appropriate depicted fix and route.
Jets use Departure Control Frequency 132.025.
Props use Departure Control Frequency 134.3

NOTE: Radar Required.

NOTE: Chart not to scale.

(NARRATIVE ON FOLLOWING PAGE)

EC-1, 07 FEB 2013 to 07 MAR 2013