

VOR/DME YQG <b>113.8</b> Chan <b>85</b>	APP CRS <b>326°</b>	Rwy Idg <b>5090</b> TDZE <b>626</b> Apt Elev <b>626</b>
---	------------------------	---

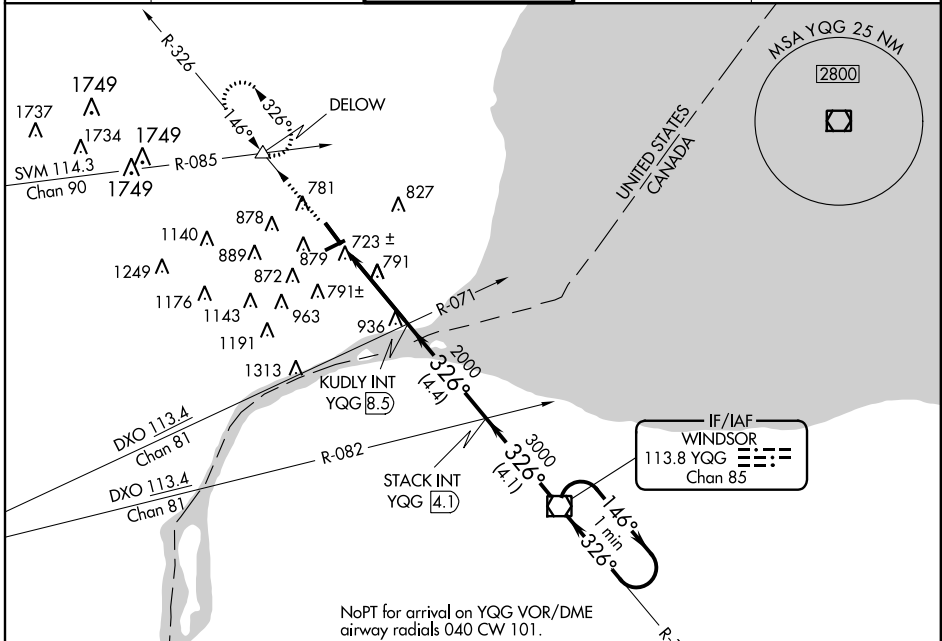
# VOR RWY 33

DETROIT/COLEMAN A. YOUNG MUNI (D/E/T)

**⚠** Visibility reduction by helicopters NA. When local altimeter setting not received, use Detroit Metro Wayne County altimeter setting and increase all MDA 60 feet and increase Cat C and D visibility ½ mile.

**⚠** MISSED APPROACH: Climb to 3000 via YQG VOR/DME R-326 to DELOW Int and hold, continue climb-in-hold to 3000.

ATIS <b>124.875</b>	DETROIT APP CON <b>126.85 363.2</b>	DETROIT CITY TOWER <b>121.3 257.8</b>	GND CON <b>121.85</b>	UNICOM <b>122.95</b>
------------------------	--	--	--------------------------	-------------------------

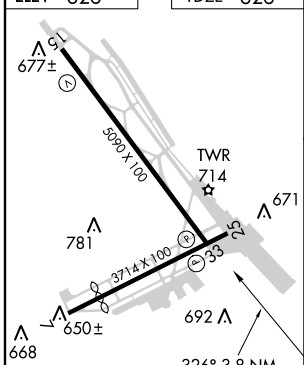


NoPt for arrival on YQG VOR/DME airway radials 040 CW 101.

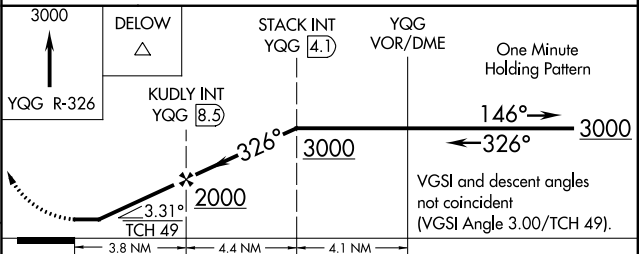
EC-1, 07 FEB 2013 to 07 MAR 2013

EC-1, 07 FEB 2013 to 07 MAR 2013

ELEV 626	TDZE 626
----------	----------



MIRL Rwy 7-25	HIRL Rwy 15-33	REIL Rwy 15 and 33			
FAF to MAP 3.8 NM					
Knots	60	90	120	150	180
Min:Sec	3:48	2:32	1:54	1:31	1:16



CATEGORY	A	B	C	D
S-33	1240-1 614 (700-1)		1240-1¾ 614 (700-1¾)	1240-2 614 (700-2)
CIRCLING	1240-1 614 (700-1)		1240-1¾ 614 (700-1¾)	1240-2 614 (700-2)

# VOR RWY 33