

DETROIT, MICHIGAN

AL-118 (FAA)

WAAS CH <b>58211</b> <b>W33A</b>	APP CRS <b>328°</b>	Rwy Idg TDZE Apt Elev	<b>5090</b> <b>626</b> <b>626</b>
--	------------------------	-----------------------------	---

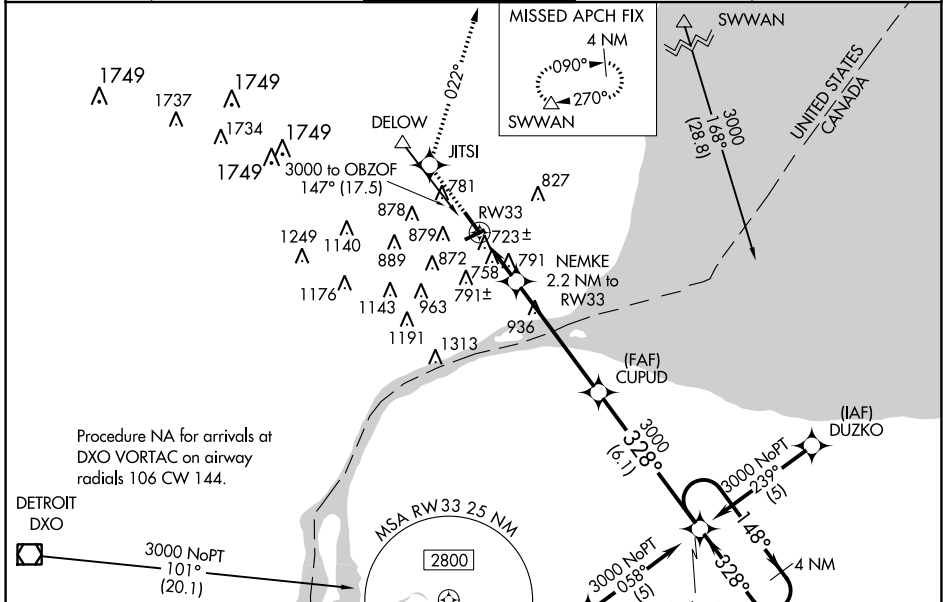
# RNAV (GPS) RWY 33

DETROIT/COLEMAN A. YOUNG MUNI (DET)

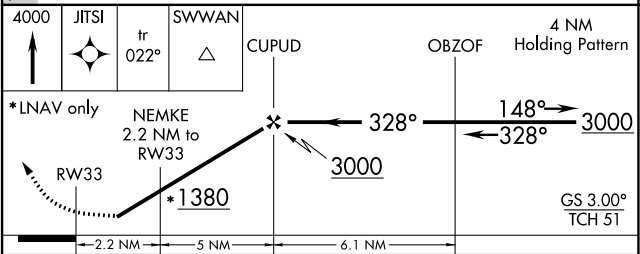
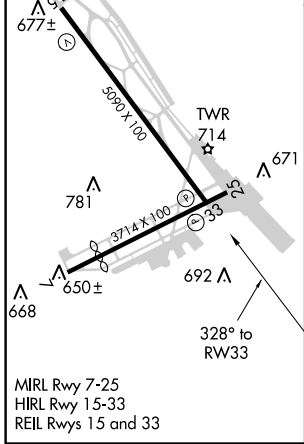
For uncompensated Baro-VNAV systems, LNAV/VNAV NA below -16°C (4°F) or above 48°C (118°F). Visibility reduction by helicopters NA. When local altimeter setting not received, use Detroit Metropolitan Wayne County altimeter setting and increase all DA 48 feet and all MDA 60 feet; increase visibility LPV all Cats, LNAV Cat C and D and Circling Cat C ¼ mile. DME/DME RNP-0.3 NA.

MISSED APPROACH: Climb to 4000 direct JTSI and via 022° track to SWWAN and hold.

ATIS <b>124.875</b>	DETROIT APP CON <b>126.85 363.2</b>	DETROIT CITY TOWER <b>121.3 257.8</b>	GND CON <b>121.85</b>	UNICOM <b>122.95</b>
------------------------	--	--	--------------------------	-------------------------



ELEV 626	TDZE 626
----------	----------



CATEGORY	A	B	C	D
LPV DA	936-1 310 (400-1)			
LNAV/VNAV DA	1039-1½ 413 (500-1½)			
LNAV MDA	1100-1 474 (500-1)	1100-1¼ 474 (500-1¼)	1100-1½ 474 (500-1½)	1100-1½ 474 (500-1½)
CIRCLING	1180-1 554 (600-1)	1180-1½ 554 (600-1½)	1200-2 574 (600-2)	

DETROIT, MICHIGAN  
Orig 12152

DETROIT/COLEMAN A. YOUNG MUNI (DET)  
42°25'N-83°01'W  
**RNAV (GPS) RWY 33**

EC-1, 07 FEB 2013 to 07 MAR 2013

EC-1, 07 FEB 2013 to 07 MAR 2013