

# RNAV (GPS) RWY 15

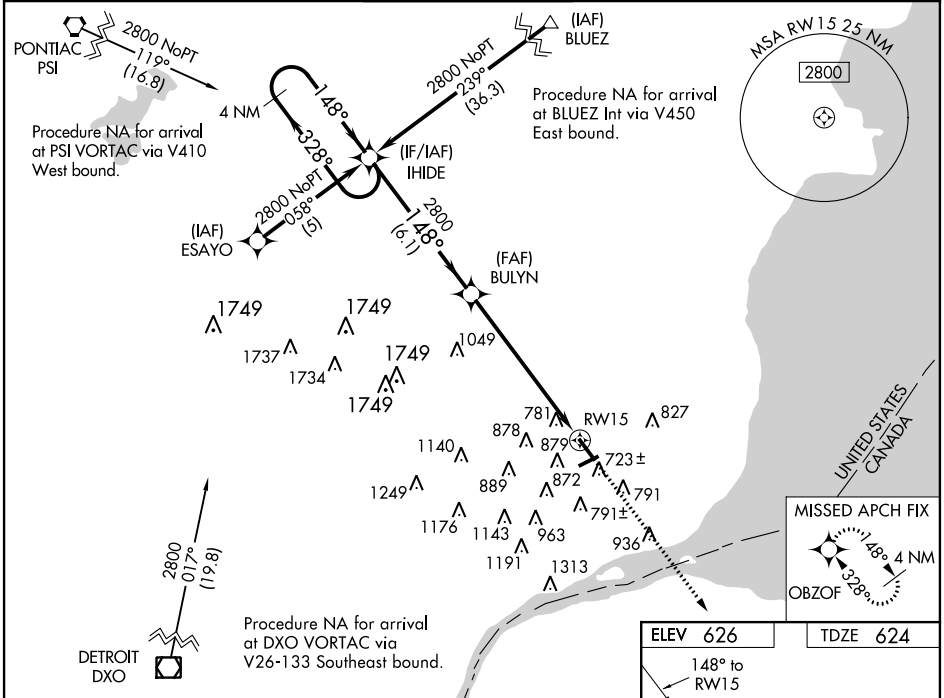
DETROIT/COLEMAN A. YOUNG MUNI (DET)

WAAS CH <b>63211</b> <b>W15A</b>	APP CRS <b>148°</b>	Rwy Idg TDZE <b>624</b> Apt Elev <b>626</b>	<b>5090</b>
--	------------------------	---	-------------

For uncompensated Baro-VNAV systems, LNAV/VNAV NA below -16°C (4°F) or above 48°C (118°F). Visibility reduction by helicopters NA. When local altimeter setting not received, use Detroit Metropolitan Wayne County altimeter setting and increase all DA 48 feet and all MDA 60 feet, increase visibility LPV all Cats, LNAV/VNAV all Cats, and Circling Cat C ¼ mile. DME/DME RNP-0.3 NA.

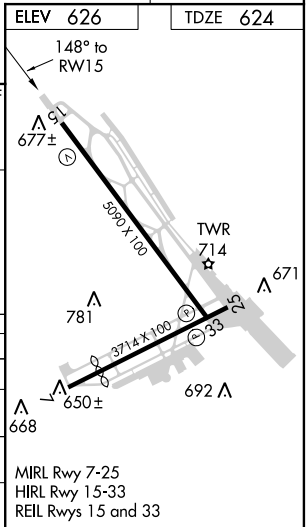
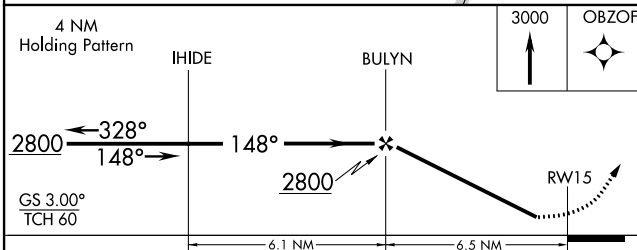
MISSED APPROACH: Climb to 3000 direct OBZOF and hold.

ATIS <b>124.875</b>	DETROIT APP CON <b>126.85 363.2</b>	DETROIT CITY TOWER <b>121.3 257.8</b>	GND CON <b>121.85</b>	UNICOM <b>122.95</b>
------------------------	--	--	--------------------------	-------------------------



EC-1, 07 FEB 2013 to 07 MAR 2013

EC-1, 07 FEB 2013 to 07 MAR 2013



CATEGORY	A	B	C	D
LPV DA		927-1	303 (400-1)	
LNAV/VNAV DA		1079-1½	455 (500-1½)	
LNAV MDA	1180-1	556 (600-1)	1180-1½ 556 (600-1½)	1180-1¾ 556 (600-1¾)
CIRCLING	1180-1	554 (600-1)	1180-1½ 554 (600-1½)	1200-2 574 (600-2)

MIRL Rwy 7-25  
HIRL Rwy 15-33  
REIL Rwy 15 and 33