

MOONN THREE DEPARTURE

SL-118 (FAA)

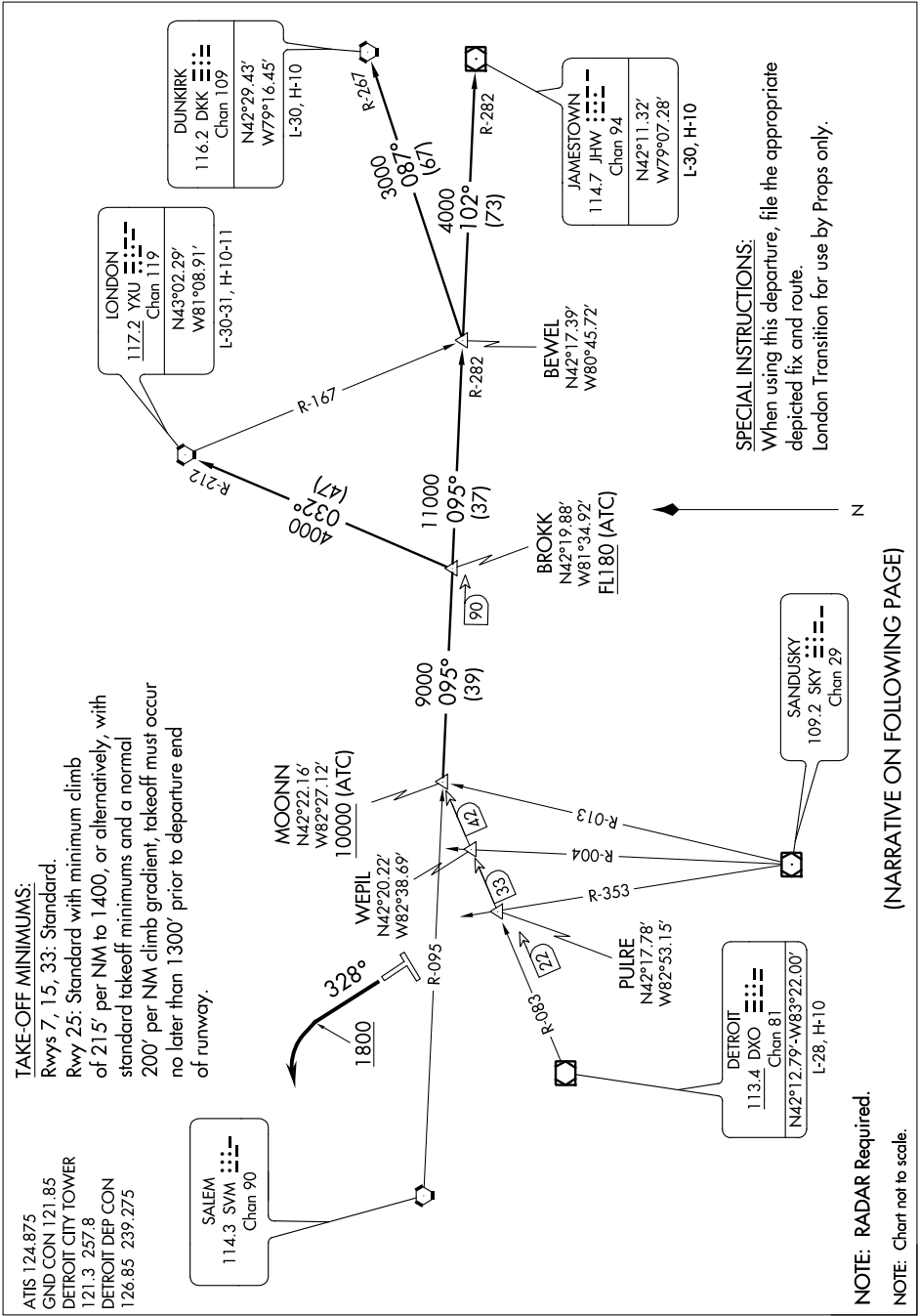
DETROIT, MICHIGAN

EC-1, 07 FEB 2013 to 07 MAR 2013

TAKE-OFF MINIMUMS:
 Rwy 7, 15, 33: Standard.
 Rwy 25: Standard with minimum climb of 215' per NM to 1400, or alternatively, with standard takeoff minimums and a normal 200' per NM climb gradient, takeoff must occur no later than 1300' prior to departure end of runway.

ATIS 124.875
 GND CON 121.85
 DETROIT CITY TOWER 121.3 257.8
 DETROIT DEP CON 126.85 239.275

MOONN THREE DEPARTURE



SPECIAL INSTRUCTIONS:
 When using this departure, file the appropriate depicted fix and route.
 London Transition for use by Props only.

(NARRATIVE ON FOLLOWING PAGE)

NOTE: RADAR Required.
 NOTE: Chart not to scale.

EC-1, 07 FEB 2013 to 07 MAR 2013