

(FWA4.FWA) 11013

# FORT WAYNE FOUR DEPARTURE

DETROIT/ COLEMAN A. YOUNG MUNI (DET)  
SL-118 (FAA) DETROIT, MICHIGAN

ATIS 124.875  
GND CON 121.85  
DETROIT CITY TOWER  
121.3 257.8  
DETROIT DEP CON  
126.85 239.275

### SPECIAL INSTRUCTIONS:

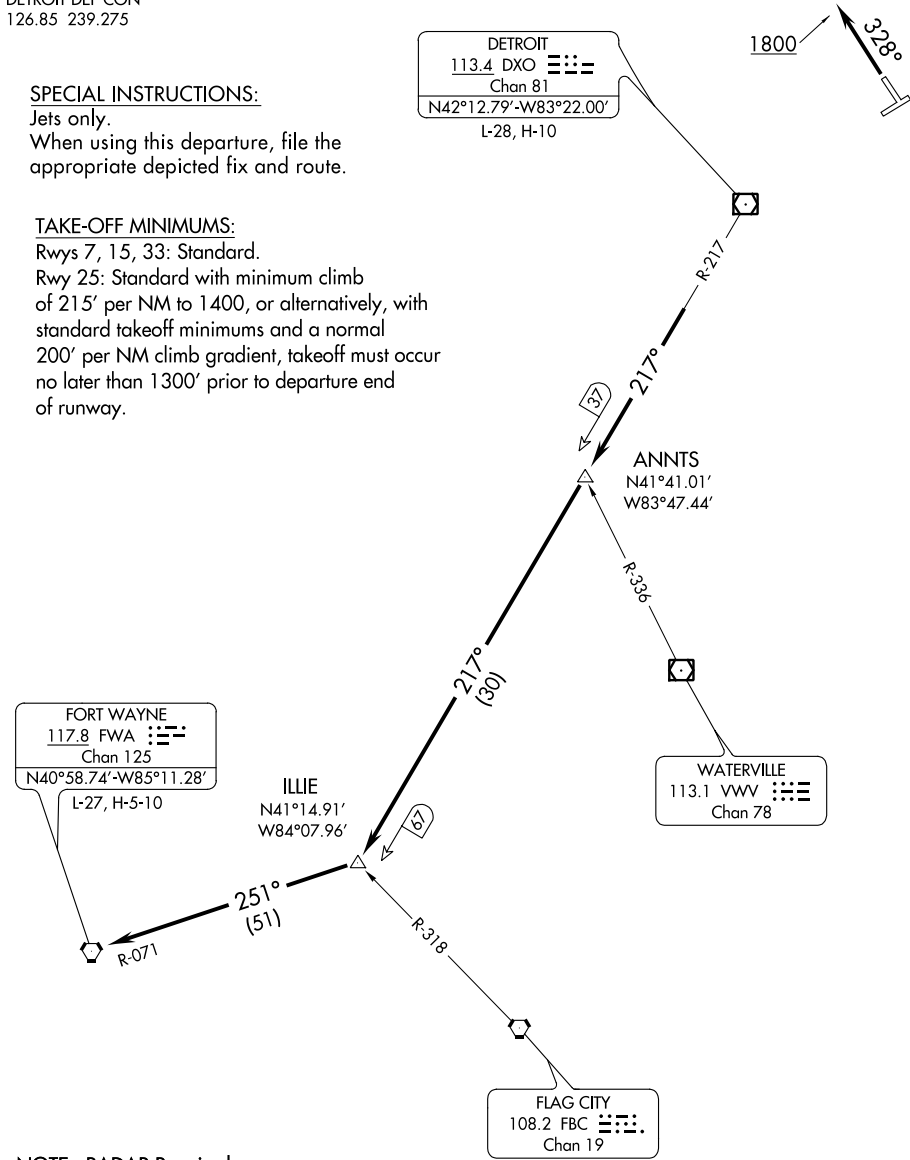
Jets only.  
When using this departure, file the appropriate depicted fix and route.

### TAKE-OFF MINIMUMS:

Rwys 7, 15, 33: Standard.  
Rwy 25: Standard with minimum climb of 215' per NM to 1400, or alternatively, with standard takeoff minimums and a normal 200' per NM climb gradient, takeoff must occur no later than 1300' prior to departure end of runway.

EC-1, 07 FEB 2013 to 07 MAR 2013

EC-1, 07 FEB 2013 to 07 MAR 2013



(NARRATIVE ON FOLLOWING PAGE)

FORT WAYNE FOUR DEPARTURE  
(FWA4.FWA) 11013

DETROIT, MICHIGAN  
DETROIT/ COLEMAN A. YOUNG MUNI (DET)