

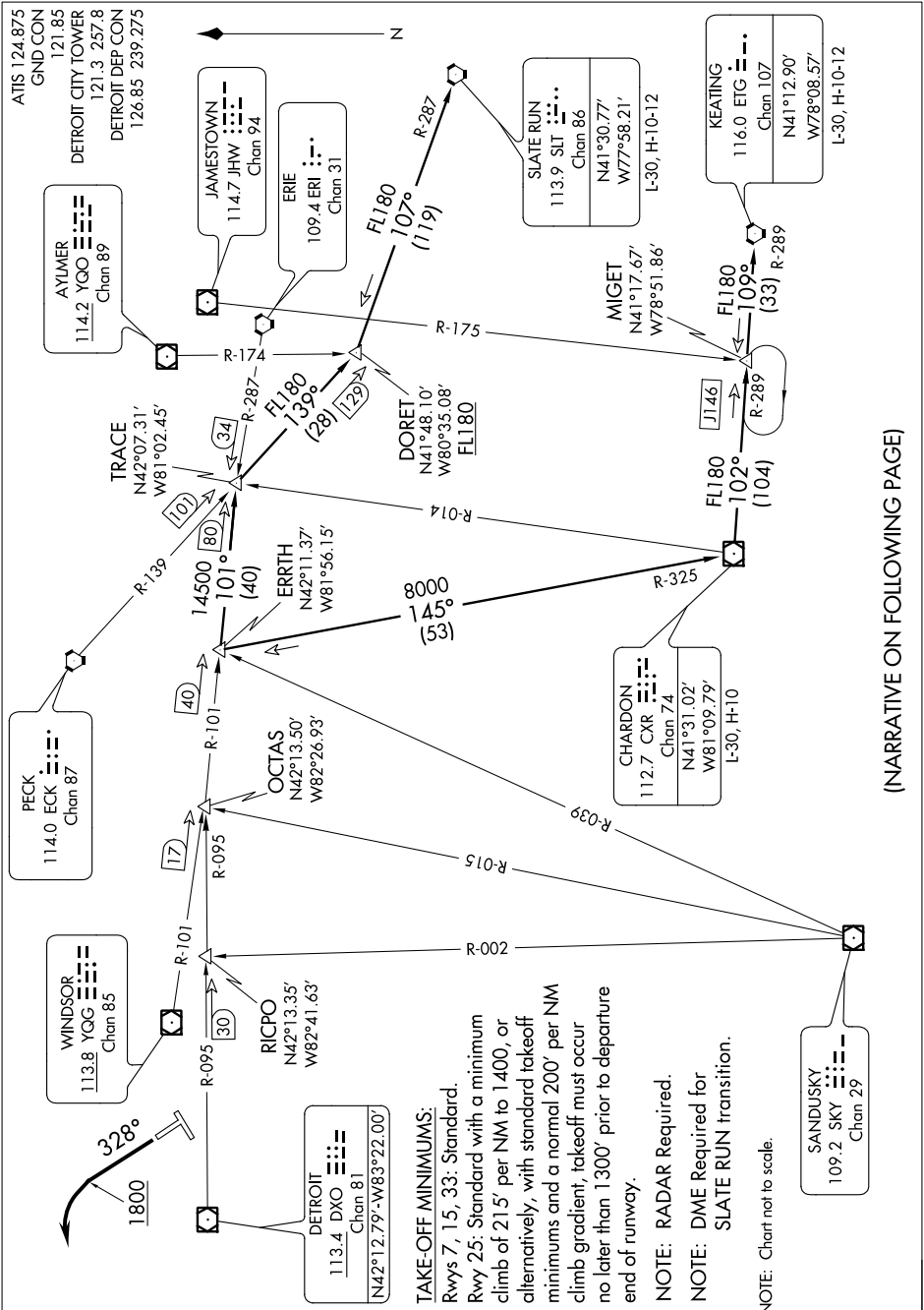
ERRTH THREE DEPARTURE

SL-118 (FAA)

DETROIT / COLEMAN A. YOUNG MUNI (DET)

DETROIT, MICHIGAN

EC-1, 07 FEB 2013 to 07 MAR 2013



ERRTH THREE DEPARTURE

DETROIT, MICHIGAN

DETROIT / COLEMAN A. YOUNG MUNI (DET)

(NARRATIVE ON FOLLOWING PAGE)

EC-1, 07 FEB 2013 to 07 MAR 2013

TAKE-OFF MINIMUMS:

Rwys 7, 15, 33: Standard.
 Rwy 25: Standard with a minimum climb of 215' per NM to 1400, or alternatively, with standard takeoff minimums and a normal 200' per NM climb gradient, takeoff must occur no later than 1300' prior to departure end of runway.

NOTE: RADAR Required.

NOTE: DME Required for SLATE RUN transition.

NOTE: Chart not to scale.