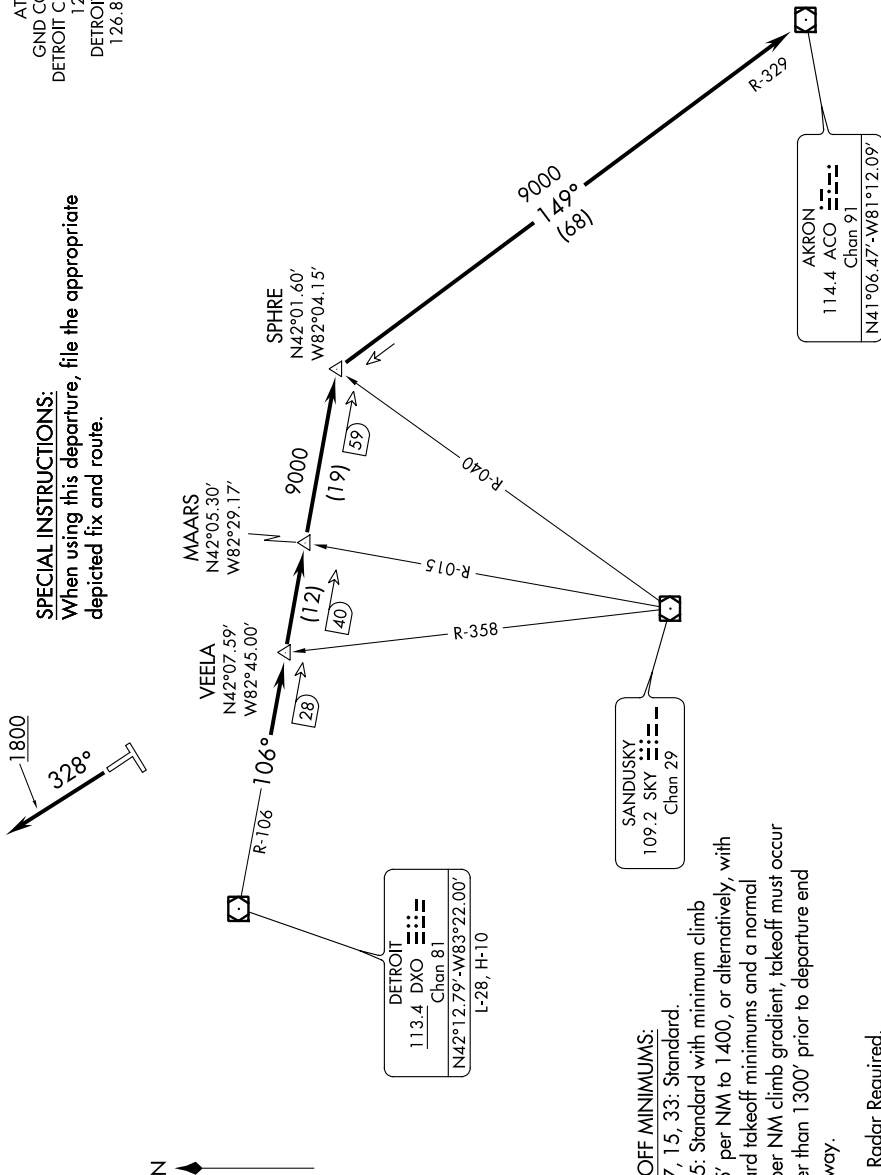


AKRON THREE DEPARTURE

EC-1, 07 FEB 2013 to 07 MAR 2013

ATIS 124.875
GND CON 121.85
DETROIT CITY TOWER
121.3 257.8
DETROIT DEP CON
126.85 239.275

SPECIAL INSTRUCTIONS:
When using this departure, file the appropriate depicted fix and route.



TAKE-OFF MINIMUMS:

Rwys 7, 15, 33: Standard.
Rwy 25: Standard with minimum climb of 21.5' per NM to 1400, or alternatively, with standard takeoff minimums and a normal 200' per NM climb gradient; takeoff must occur no later than 1300' prior to departure end of runway.

NOTE: Radar Required.

NOTE: Chart not to scale.

(NARRATIVE ON FOLLOWING PAGE)

EC-1, 07 FEB 2013 to 07 MAR 2013