

DES MOINES, IOWA

AL-117 (FAA)

VOR/DME TNU 112.5 Chan 72	APP CRS 236°	Rwy Idg TDZE Apt Elev	9003 939 957
---	------------------------	-----------------------------	---

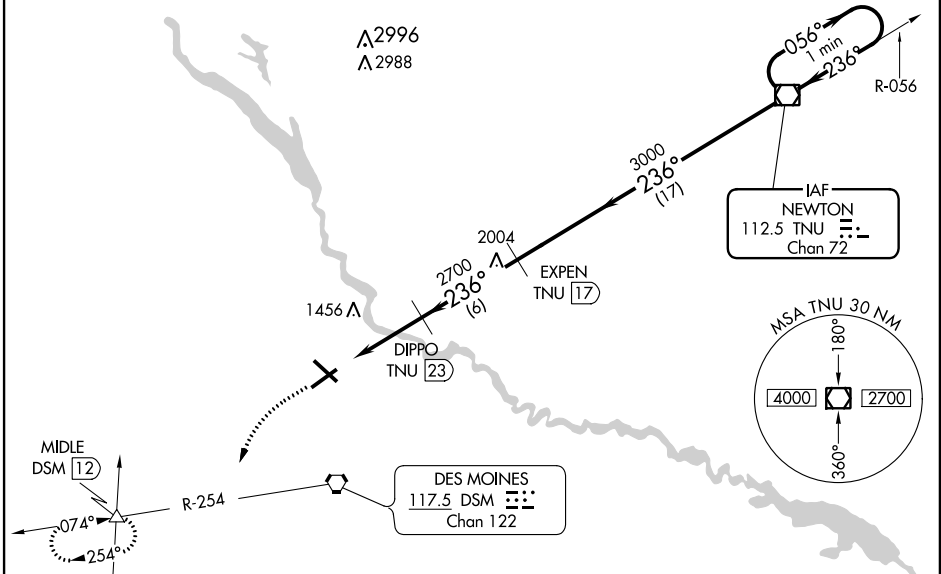
VOR/DME RWY 23

DES MOINES INTL (DSM)

<p>▼ When VGSI inoperative, procedure NA at night.</p> <p>▲</p>	<p>MISSED APPROACH: Climb to 2000, then climbing left turn to 3000 via heading 200° and DSM VORTAC R-254 to MIDDLE Int/DSM 12 DME and hold.</p>
---	---

<p>ATIS 119.55 251.05</p>	<p>DES MOINES APP CON 123.9 307.15</p>	<p>DES MOINES TOWER 118.3 257.8</p>	<p>GND CON 121.9 348.6</p>	<p>CLNC DEL 134.15 317.55</p>
--------------------------------------	---	--	---------------------------------------	--

NoPT for arrivals on TNU VOR/DME airway radials 031 CW 081.

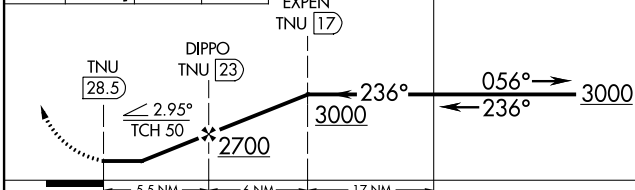


NC-3, 07 FEB 2013 to 07 MAR 2013

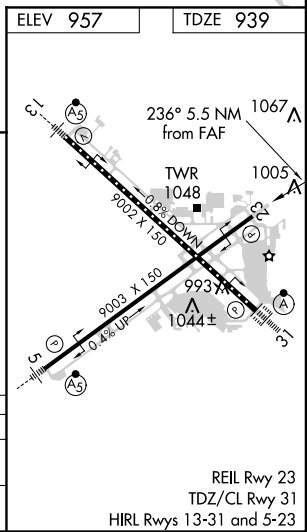
NC-3, 07 FEB 2013 to 07 MAR 2013



2000	3000	DSM R-254	MIDDLE	<p>VGSI and descent angles not coincident (VGSI Angle 3.00/TCH 56).</p> <p>One Minute Holding Pattern</p>
------	------	-----------	--------	---



CATEGORY	A	B	C	D
S-23	1720-1 781 (800-1)	1720-1 ¼ 781 (800-1 ¼)	1720-2 ¼ 781 (800-2 ¼)	1720-2 ½ 781 (800-2 ½)
CIRCLING	1720-1 763 (800-1)	1720-1 ¼ 763 (800-1 ¼)	1720-2 ¼ 763 (800-2 ¼)	1720-2 ½ 763 (800-2 ½)



DES MOINES, IOWA
Orig-A 12320

41°32'N-93°40'W

DES MOINES INTL (DSM) VOR/DME RWY 23

REIL Rwy 23
TDZ/CL Rwy 31
HIRL Rws 13-31 and 5-23