


WAAS CH 69202 W05A	APP CRS 051°	Rwy Idg 9003 TDZE 931 Apt Elev 958
--	------------------------	---

RNAV (GPS) RWY 5

DES MOINES INTL (DSM)

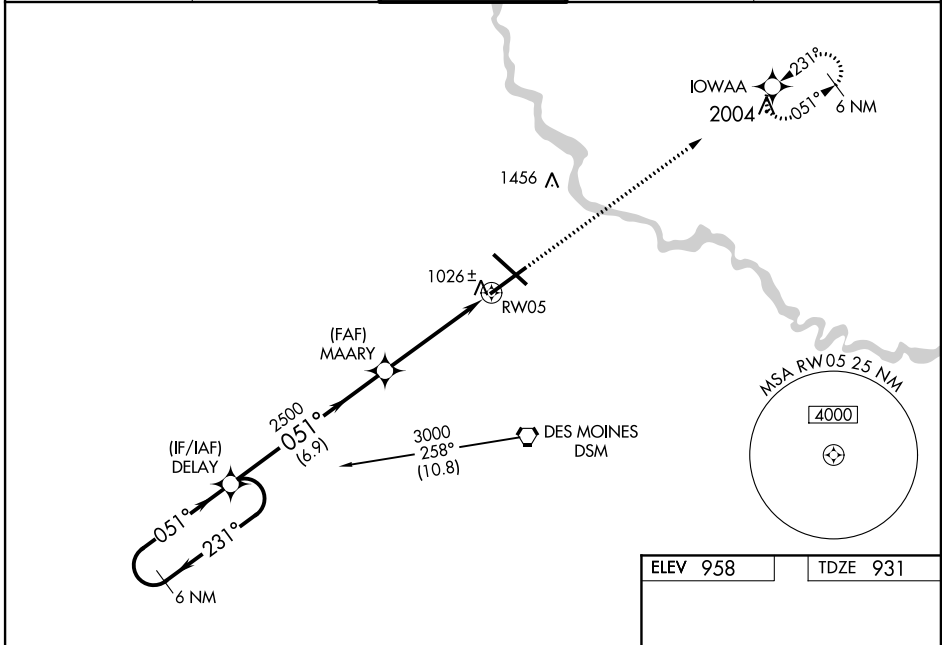
▼ DME/DME RNP-0.3 NA.
▲ For uncompensated Baro-VNAV systems, LNAV/VNAV NA below -16°C (4°F) or above 48°C (116°F).
 If local altimeter setting not received, use Ankeny Rgnl altimeter setting and increase all DAs/MDAs 40 feet.
 Baro-VNAV and VDP NA when using Ankeny Rgnl altimeter setting.
 For inoperative MALSRL, increase LPV all Cats. visibility to RVR 5000 and LNAV/VNAV all Cats. visibility to RVR 6000 and LNAV Cat. D visibility to RVR 6000.

MALSRL



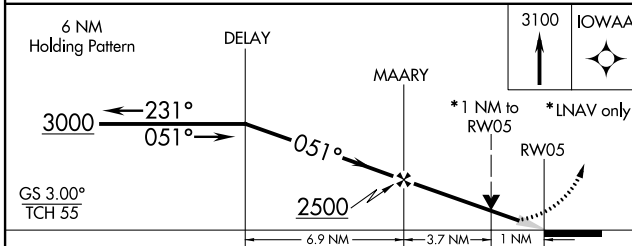
MISSED APPROACH: Climb to 3100 direct IOWAA and hold.

ATIS 119.55 251.05	DES MOINES APP CON 123.9 307.15	DES MOINES TOWER 118.3 257.8	GND CON 121.9 348.6	CLNC DEL 134.15 317.55
------------------------------	---	--	-------------------------------	----------------------------------



NC-3, 07 FEB 2013 to 07 MAR 2013

NC-3, 07 FEB 2013 to 07 MAR 2013



ELEV 958	TDZE 931
----------	----------

REIL Rwy 23
 TDZ/CL Rwy 31
 HIRL Rws 13-31 and 5-23

CATEGORY	A	B	C	D
LPV DA		1188/24	257 (300-½)	
LNAV/VNAV DA		1385/50	454 (500-1)	
LNAV MDA		1320/24	389 (400-½)	
CIRCLING	1420-1	462 (500-1)	1420-1½ 462 (500-1½)	1520-2 562 (600-2)