

WAAS CH 78002 W31A	APP CRS 309°	Rwy Idg 9002 TDZE 958 Apt Elev 958
----------------------------------------	------------------------	---------------------------------------------------------------

RNAV (GPS) RWY 31

DES MOINES INTL (DSM)

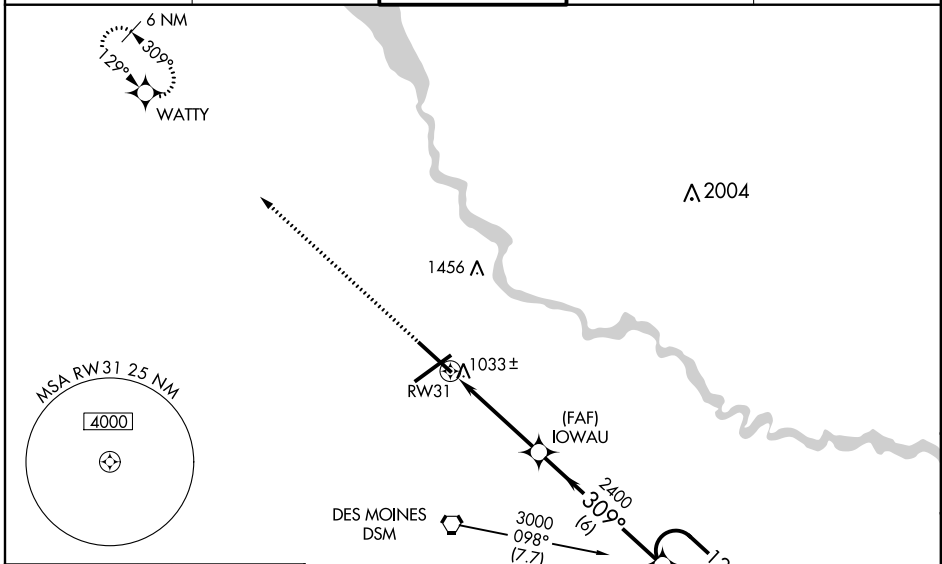
⚠ For uncompensated Baro-VNAV systems, LNAV/VNAV NA below -16°C (4°F) or above 46°C (114°F). DME/DME RNP-0.3 NA.
⚠ VDP and Baro-VNAV NA when using Ankeny Rgnl altimeter setting.
 When local altimeter setting not received, use Ankeny Rgnl altimeter setting and increase all DA/MDA 40 feet and increase LNAV/VNAV all Cats visibility to RVR 5000.
 For inop ALSF, increase LNAV Cat D visibility to RVR 6000.
 For inop ALSF, when using Ankeny Rgnl altimeter setting increase LPV all Cats visibility to RVR 5000 and LNAV Cat D visibility to RVR 6000.

ALSF-2



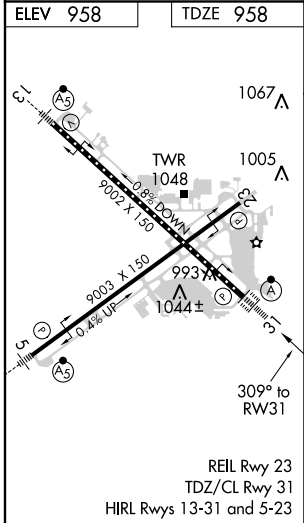
MISSED APPROACH:
Climb to 3500 direct WATTY and hold.

ATIS 119.55 251.05	DES MOINES APP CON 123.9 307.15	DES MOINES TOWER 118.3 257.8	GND CON 121.9 348.6	CLNC DEL 134.15 317.55
------------------------------	-------------------------------------------	----------------------------------------	-------------------------------	----------------------------------

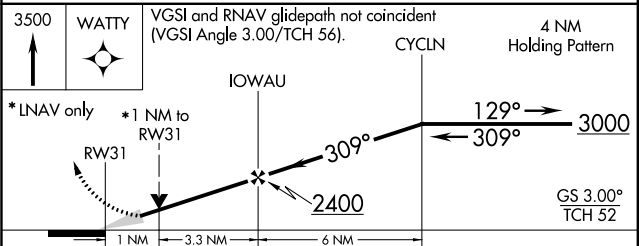


NC-3, 07 FEB 2013 to 07 MAR 2013

NC-3, 07 FEB 2013 to 07 MAR 2013



Procedure NA for arrivals on DSM VORTAC airway radials 042 CW 141.



CATEGORY	A	B	C	D
LPV DA		1208/24	250 (300-1/2)	
LNAV/ VNAV DA		1352/40	394 (400-3/4)	
LNAV MDA		1320/24	362 (400-1/2)	1320/50 362 (400-1)
CIRCLING	1420-1	462 (500-1)	1420-1 1/2 462 (500-1 1/2)	1520-2 562 (600-2)