


WAAS CH 72602 W13A	APP CRS 129°	Rwy Idg 9002 TDZE 921 Apt Elev 958
--	------------------------	---

RNAV (GPS) RWY 13

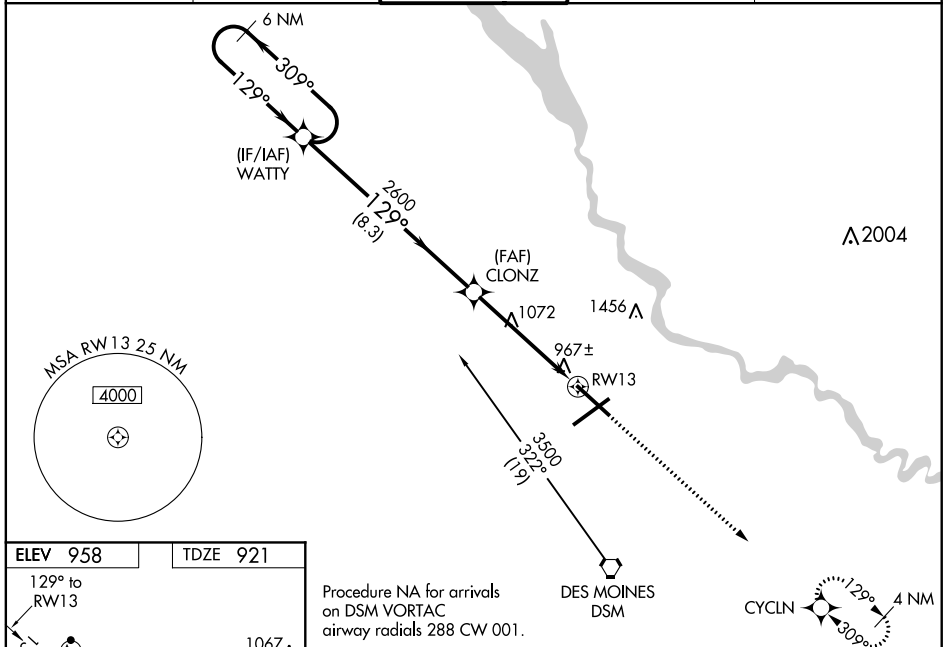
DES MOINES INTL (DSM)

⚠ For uncompensated Baro-VNAV systems, LNAV/VNAV NA below -16°C (4°F) or above 48°C (116°F). DME/DME RNP-0.3 NA.
⚠ VDP and Baro-VNAV NA when using Ankeny Rgnl altimeter setting. When local altimeter setting not received, use Ankeny Rgnl altimeter setting and increase all DA/MDA 40 feet, and increase LNAV/VNAV Cats A, B and C visibility to RVR 5000.
 For inoperative MALSR, increase LNAV/VNAV Cat D visibility to RVR 5000.
 For inoperative MALSR, when using Ankeny Rgnl altimeter setting increase LPV all Cats visibility to RVR 5000.

MALSR 

MISSED APPROACH: Climb to 3000 direct CYCLN and hold.

ATIS 119.55 251.05	DES MOINES APP CON 123.9 307.15	DES MOINES TOWER 118.3 257.8	GND CON 121.9 348.6	CLNC DEL 134.15 317.55
------------------------------	---	--	-------------------------------	----------------------------------



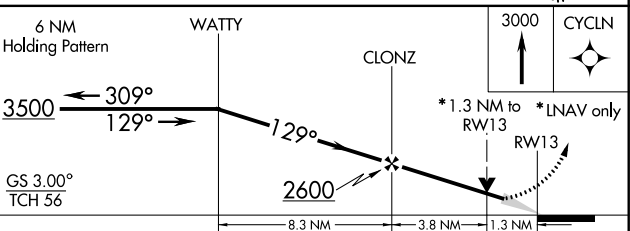
NC-3, 07 FEB 2013 to 07 MAR 2013

NC-3, 07 FEB 2013 to 07 MAR 2013

ELEV 958	TDZE 921
----------	----------

129° to RWY 13
AS
1067 Δ
1005 Δ
TWR 1048
9002 X 130
993 Δ
1044 ±
9003 X 150
10.4° UP
REIL Rwy 23
TDZ/CL Rwy 31
HIRL Rwys 13-31 and 5-23

Procedure NA for arrivals on DSM VORTAC airway radials 288 CW 001.



CATEGORY	A	B	C	D
LPV DA	1171/24 250 (300-1/2)			
LNAV/ VNAV DA	1242/24 321 (300-1/2)			1242/40 321 (300-3/4)
LNAV MDA	1380/24	459 (500-1/2)	1380/40 459 (500-3/4)	1380/50 459 (500-1)
CIRCLING	1420-1	462 (500-1)	1420-1 1/2 462 (500-1 1/2)	1520-2 562 (600-2)