

DES MOINES, IOWA

HI-ILS or LOC RWY 31

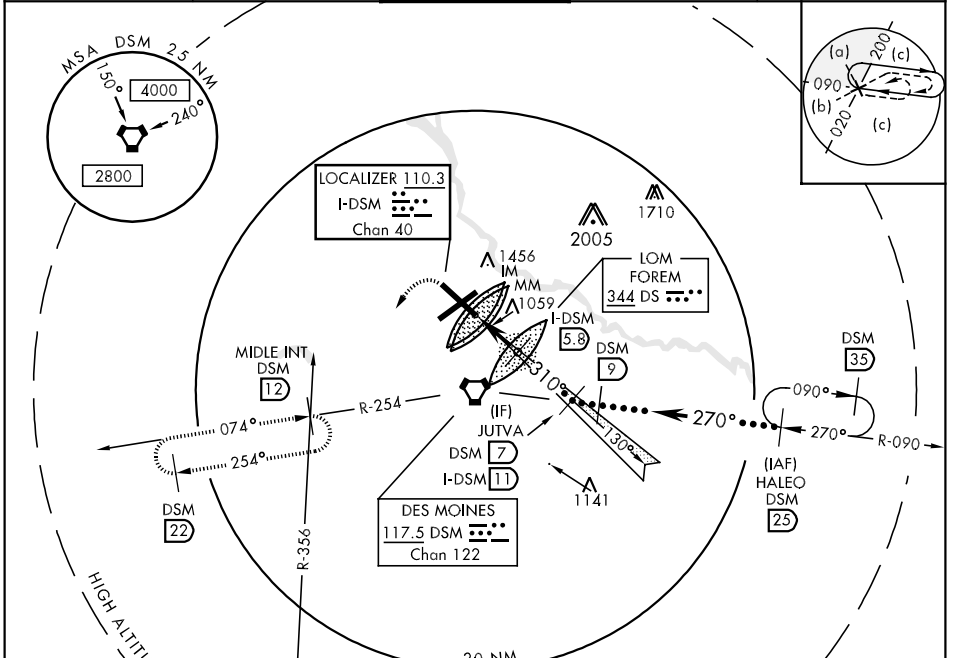
LOC I-DSM 110.3 Chan 40	APCH CRS 310°	Rwy Idg THRE Arprt Elev 9002 958 958	JAL-117 [USAF]	DES MOINES INTL (KDSM)
--------------------------------------	-------------------------	--	----------------	------------------------

Use I-DSM DME while on the LOC course.
 * When ALS inop, increase CAT E RVR to 4000.
 ** When ALS inop, increase CAT E vis to 1 mile.

ALSF-2

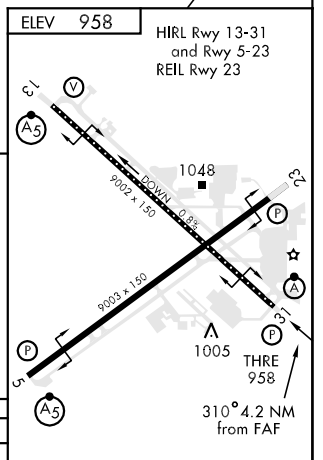
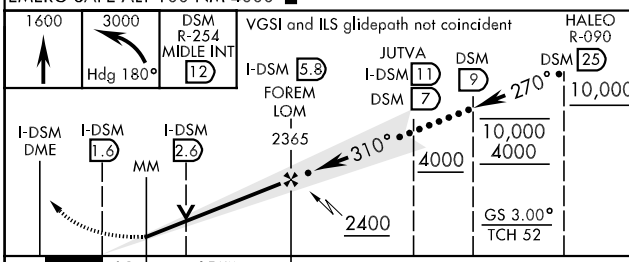
MISSED APPROACH: Climb to 1600 then climbing left turn to 3000 via heading 180° and DSM VORTAC R-254 to MIDDLE INT/DSM 12 DME and hold.

ATIS 119.55 251.05	DES MOINES APP CON 135.2 360.7	DES MOINES TOWER 118.3 257.8	GND CON 121.9 348.6	CLNC DEL 134.15 317.55
------------------------------	--	--	-------------------------------	----------------------------------



DME or RADAR REQUIRED

EMERG SAFE ALT 100 NM 4000



CATEGORY	C	D	E
S-ILS 31*	1158/18	200	(200-3/4)
S-LOC 31**	1320/35	362	(400-3/4)
CIRCLING	1420-1 1/2 462 (500-1 1/2)	1520-2 562 (600-2)	1760-2 3/4 802 (900-2 3/4)

FAF to MAP 4.2 NM					
Knots	120	140	160	180	200
Min:Sec	2:06	1:48	1:35	1:24	1:16

DES MOINES, IOWA 41° 32'N-93° 40'W DES MOINES INTL (KDSM)
 Amdt 7 11237

HI-ILS or LOC RWY 31

NC-3, 07 FEB 2013 to 07 MAR 2013

NC-3, 07 FEB 2013 to 07 MAR 2013