

APP CRS 355°	Rwy Idg TDZE Apt Elev	5495 197 202
------------------------	-----------------------------	---

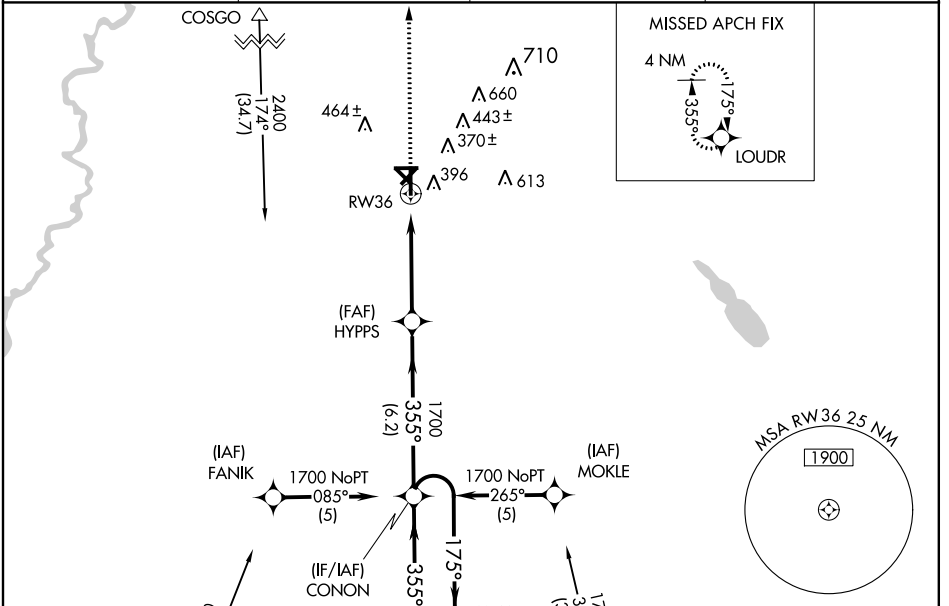
RNAV (GPS) RWY 36

DE RIDDER/ BEAUREGARD RGNL (DRI)

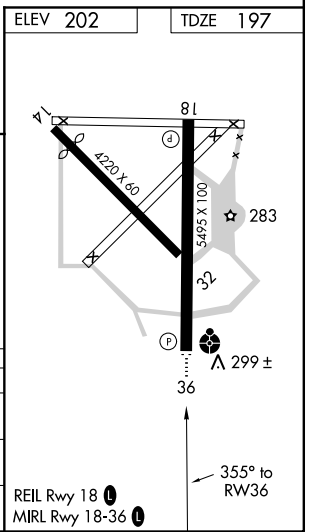
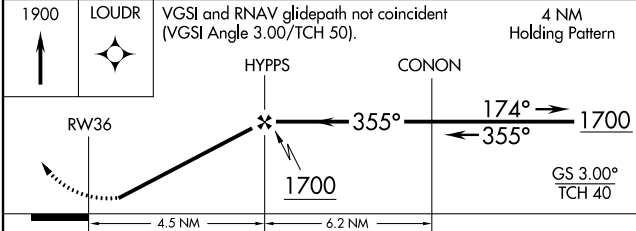
⚠ Inoperative table does not apply. For uncompensated Baro-VNAV systems, LNAV/VNAV NA below -15°C (5°F) or above 48°C (118°F). DME/DME RNP-0.3 NA. Visibility reduction by helicopters NA. When local altimeter setting not received, use Fort Polk altimeter setting and increase all DA 53 feet, and all MDA 60 feet, increase LNAV/VNAV all Cats and LNAV Cat C and D visibility ¼ mile.

ODALS MISSED APPROACH: Climb to 1900 direct LOUDR and hold.

AWOS-3PT 118.225	POLK APP CON 123.7 261.3	DE RIDDER RADIO 122.2	UNICOM 122.8 (CTAF)
----------------------------	------------------------------------	---------------------------------	-------------------------------



ELEV 202	TDZE 197
----------	----------



CATEGORY	A	B	C	D
LNAV/VNAV DA	569-1¼		372 (400-1¼)	
LNAV MDA	660-1	463 (500-1)	660-1¼ 463 (500-1¼)	660-1½ 463 (500-1½)
CIRCLING	720-1	518 (600-1)	720-1½ 518 (600-1½)	780-2 578 (600-2)

SC-4, 07 FEB 2013 to 07 MAR 2013

SC-4, 07 FEB 2013 to 07 MAR 2013