

APP CRS <b>175°</b>	Rwy Idg <b>5495</b>
	TDZE <b>202</b>
	Apt Elev <b>202</b>

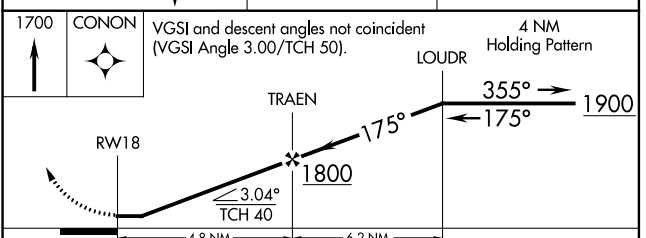
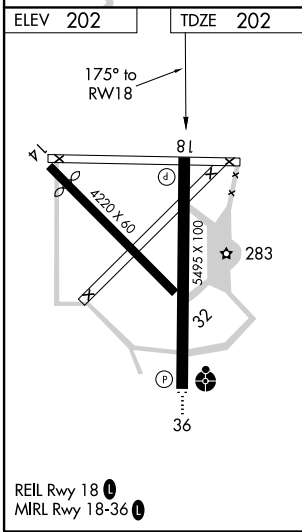
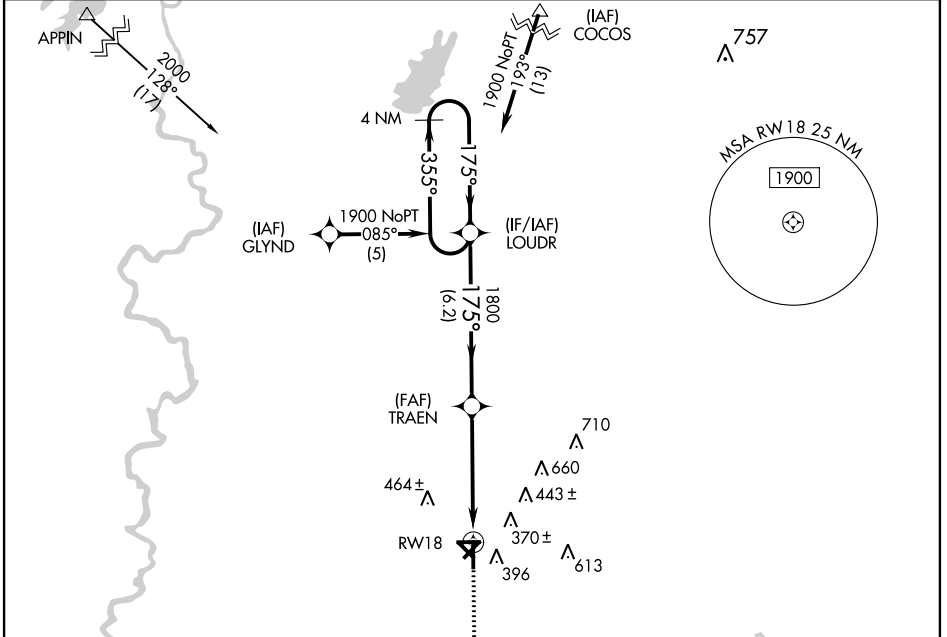
# RNAV (GPS) RWY 18

DE RIDDER/BEAUREGARD RGNL (DRI)

**⚠** DME/DME RNP-0.3 NA. Visibility reduction by helicopters NA. When local altimeter setting not received, use Fort Polk altimeter setting and increase all MDA 60 feet, and LNAV visibility Cat C and D 1/4 mile.

**⚠** MISSED APPROACH: Climb to 1700 direct CONON and hold.

AWOS-3PT <b>118.225</b>	POLK APP CON <b>123.7 261.3</b>	DE RIDDER RADIO <b>122.2</b>	UNICOM <b>122.8 (CTAF) 0</b>
----------------------------	------------------------------------	---------------------------------	---------------------------------



CATEGORY	A	B	C	D
LNAV MDA	680-1	478 (500-1)	680-1 1/4 478 (500-1 1/4)	680-1 1/2 478 (500-1 1/2)
CIRCLING	720-1	518 (600-1)	720-1 1/2 518 (600-1 1/2)	780-2 578 (600-2)

SC-4, 07 FEB 2013 to 07 MAR 2013

SC-4, 07 FEB 2013 to 07 MAR 2013