

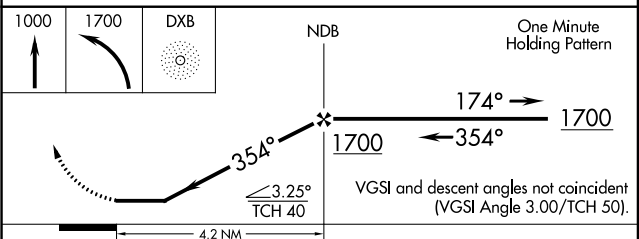
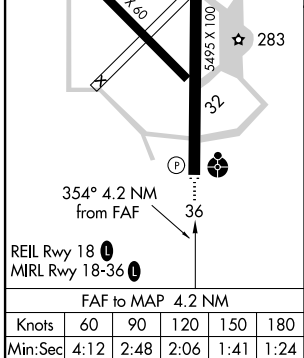
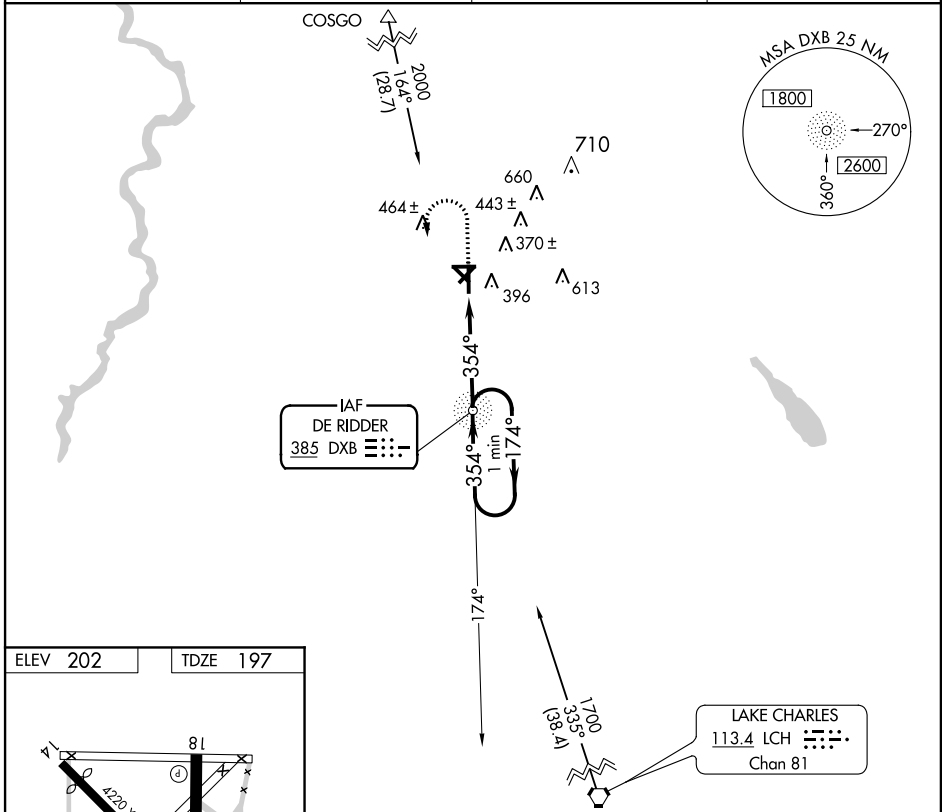
NDB DXB <b>385</b>	APP CRS <b>354°</b>	Rwy Idg TDZE Apt Elev	<b>5495</b> <b>197</b> <b>202</b>
-----------------------	------------------------	-----------------------------	---

# NDB RWY 36

DE RIDDER/BEAUREGARD RGNL (DRI)

	Inoperative table does not apply. Visibility reduction by helicopters NA. When local altimeter setting not received, use Fort Polk altimeter setting and increase all MDA 60 feet, and S-36 visibility Cat D 1/4 mile.		MISSED APPROACH: Climb to 1000 then climbing left turn to 1700 direct DXB NDB and hold.

AWOS-3PT <b>118.225</b>	POLK APP CON <b>123.7 261.3</b>	DE RIDDER RADIO <b>122.2</b>	UNICOM <b>122.8 (CTAF)</b>
----------------------------	------------------------------------	---------------------------------	-------------------------------



CATEGORY	A	B	C	D
S-36	700-1	503 (500-1)	700-1 1/2	503 (500-1 1/2)
CIRCLING	720-1	518 (600-1)	720-1 1/2	780-2 518 (600-1 1/2)

# NDB RWY 36

SC-4, 07 FEB 2013 to 07 MAR 2013

SC-4, 07 FEB 2013 to 07 MAR 2013