

DELTA, UTAH

AL-113 (FAA)

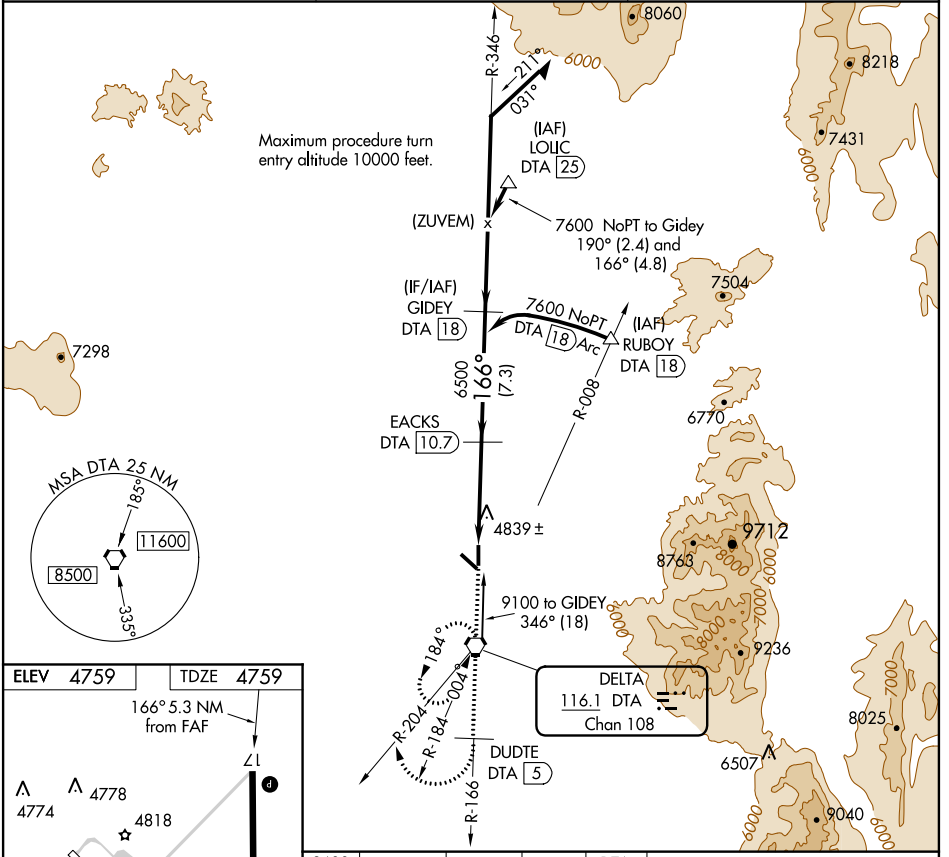
VORTAC DTA <b>116.1</b> Chan <b>108</b>	APP CRS <b>166°</b>	Rwy Idg <b>5502</b> TDZE <b>4759</b> Apt Elev <b>4759</b>
---	------------------------	---

# VOR/DME RWY 17

DELTA MUNI (DTA)

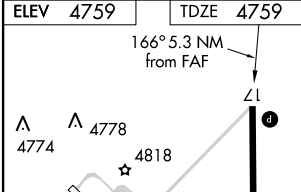
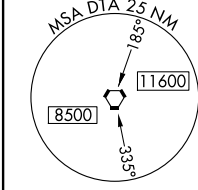
**▼** Circling to Rwy 30 NA at night.  
**▲ NA** If local altimeter setting not received, procedure NA.  
**MISSED APPROACH:** Climb to 9600 via DTA VORTAC R-346 and R-166 to DUDTE/5 DME and climbing right turn via DTA VORTAC R-204 to DTA VORTAC and hold, continue climb-in-hold to 9600.

AWOS-3 <b>127.75</b>	CEDAR CITY RADIO <b>122.55</b>	UNICOM <b>122.8</b> (CTAF)
-------------------------	-----------------------------------	-------------------------------



SW-4, 07 FEB 2013 to 07 MAR 2013

SW-4, 07 FEB 2013 to 07 MAR 2013



9600	DTA R-346 and DTA R-166	DUDTE DTA [5]	DTA R-204	DTA	GIDEY DTA [18]	Remain within 10 NM
					9100	346°
					7600	166°
					6500	3.00° TCH 40
						1 NM, 4.4 NM, 7.3 NM

CATEGORY	A	B	C	D
S-17		5100-1	341 (400-1)	
CIRCLING	5140-1 381 (400-1)	5220-1 461 (500-1)	5220-1½ 461 (500-1½)	5320-2 561 (600-2)

DELTA, UTAH  
Amdt 2 12264

39°23'N-112°30'W

# DELTA MUNI (DTA) VOR/DME RWY 17