

CORTEZ, COLORADO

AL-112 (FAA)

| | | | |
|--|------------------------|-----------------------------|---|
| VOR/DME CEZ 108.4 Chan 21 | APP CRS 196° | Rwy Idg TDZE Apt Elev | 7205 5913 5918 |
|--|------------------------|-----------------------------|---|

VOR RWY 21

CORTEZ MUNI (CEZ)

CAUTION: Highway lights located between facility and runway are aligned with approach area.

MISSED APPROACH: Climbing right turn to 9800 direct to CEZ VOR/DME and hold.

ASOS
135.625

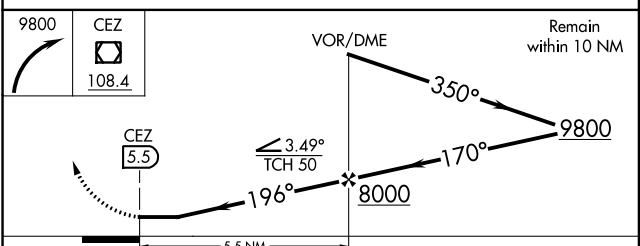
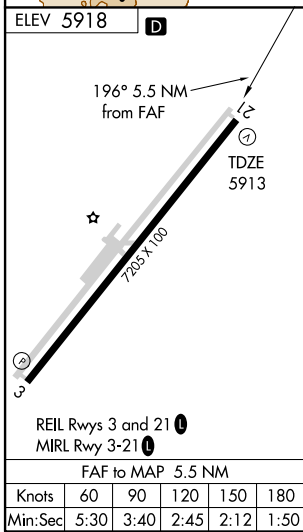
DENVER CENTER
118.575 348.7

UNICOM
122.8 (CTAF)



SW-1, 07 FEB 2013 to 07 MAR 2013

SW-1, 07 FEB 2013 to 07 MAR 2013



| CATEGORY | A | B | C | D |
|----------|--------|-------------|-----------------------|-------------------------|
| S-21 | 6600-1 | 687 (700-1) | 6600-2 687 (700-2) | 6600-2½ 687 (700-2½) |
| CIRCLING | 6600-1 | 682 (700-1) | 6600-2 682 (700-2) | 6800-3 882 (900-3) |

CORTEZ, COLORADO
Amdt 5A 09351

37°18'N-108°38'W

CORTEZ MUNI (CEZ) VOR RWY 21