

# RNAV (GPS) Z RWY 21

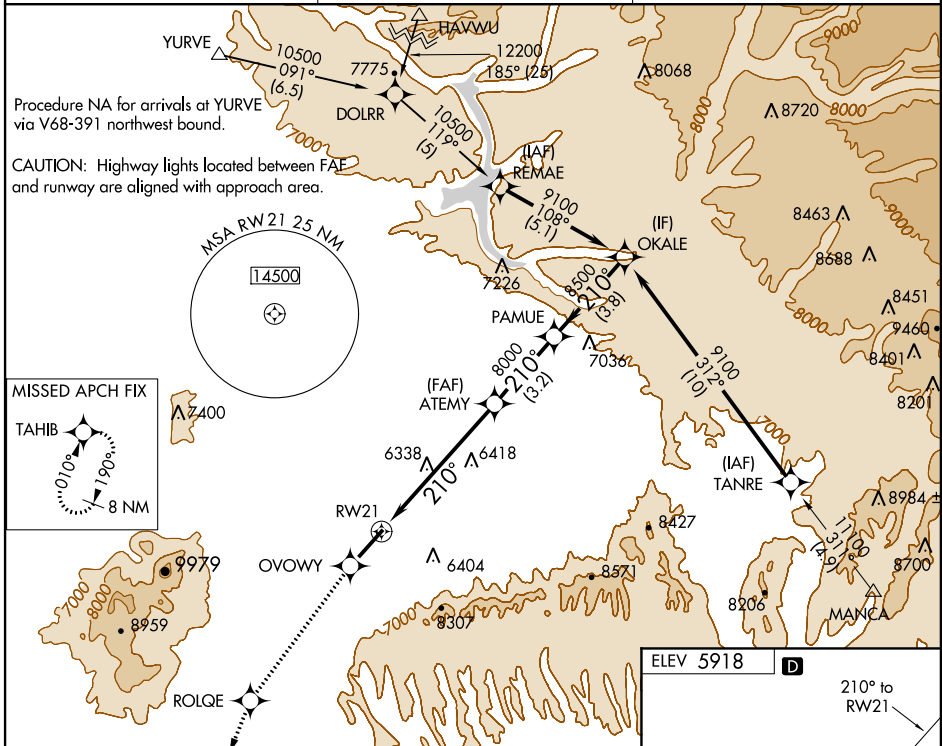
CORTEZ MUNI (C/EZ)

WAAS CH <b>99699</b> <b>W21A</b>	APP CRS <b>210°</b>	Rwy Idg TDZE Apt Elev	<b>7205</b> <b>5913</b> <b>5918</b>
--	------------------------	-----------------------------	---

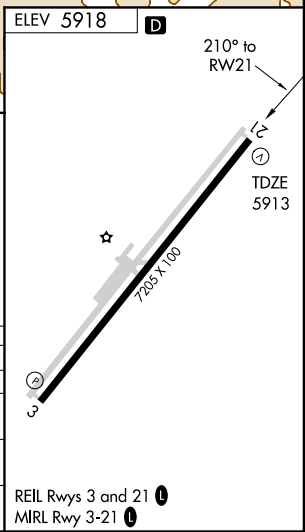
**▽** DME/DME RNP-0.3 NA.  
**▲** When VGSI inoperative, procedure NA at night.

MISSED APPROACH: Climb to 9000 direct OVOWY and via 205° track to ROLQE and via 190° track to TAHIB and hold.

ASOS <b>135.625</b>	DENVER CENTER <b>118.575 348.7</b>	UNICOM <b>122.8 (CTAF)</b> <b>①</b>
------------------------	---------------------------------------	--



9000	OVOWY	205° track	ROLQE	190° track	TAHIB	PAMUE	OKALE
↑	✦	✦	✦	✦	✦	✦	✦
VGSI and RNAV glidepath not coincident.							
RW21		ATEMY		PAMUE		OKALE	
8000		8500		9100		Procedure Turn NA	
6.1 NM		3.2 NM		3.8 NM		GS 3.10° TCH 50	
CATEGORY	A		B		C		D
LPV DA	6215-1		302 (300-1)				
LNAV/VNAV DA	NA						
LNAV MDA	7140-1¼ 1227 (1300-1¼)	7140-1½ 1227 (1300-1½)	7140-3	1227 (1300-3)			
CIRCLING	7140-1¼ 1222 (1300-1¼)	7140-1½ 1222 (1300-1½)	7140-3	1222 (1300-3)			



SW-1, 07 FEB 2013 to 07 MAR 2013

SW-1, 07 FEB 2013 to 07 MAR 2013