

# CORTEZ ONE DEPARTURE

SL-112 (FAA)

CORTEZ MUNI (CEZ)  
CORTEZ, COLORADO

ASOS  
135.625  
DENVER CENTER  
118.575 348.7  
CTAF  
122.8

LEDVE  
N37°27.61'  
W108°40.73'  
CEZ 7

CONES  
110.2 ETL  
Chan 39  
N38°02.42'  
W108°15.51'

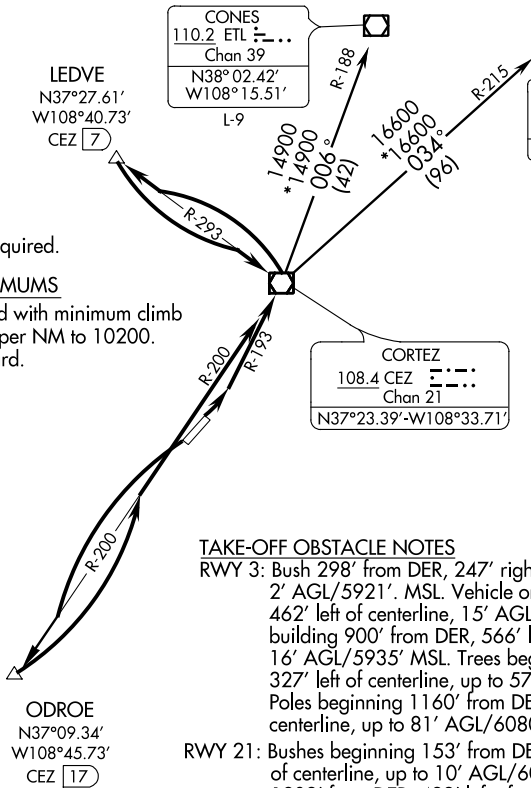
BLUE MESA  
114.9 HBU  
Chan 96  
N38°27.13' - W107°02.39'  
L-9, H-3

CORTEZ  
108.4 CEZ  
Chan 21  
N37°23.39' - W108°33.71'

NOTE: DME Required.

### TAKE-OFF MINIMUMS

Rwy 3: Standard with minimum climb  
of 220' per NM to 10200.  
Rwy 21: Standard.



### TAKE-OFF OBSTACLE NOTES

RWY 3: Bush 298' from DER, 247' right of centerline, 2' AGL/5921'. MSL. Vehicle on road 547' from DER, 462' left of centerline, 15' AGL/5934' MSL. Vent on building 900' from DER, 566' left of centerline, 16' AGL/5935' MSL. Trees beginning 966' from DER, 327' left of centerline, up to 57' AGL/6196' MSL. Poles beginning 1160' from DER, 518' left of centerline, up to 81' AGL/6080' MSL.

RWY 21: Bushes beginning 153' from DER, 237' left of centerline, up to 10' AGL/6049' MSL. Trees beginning 1902' from DER, 422' left of centerline, up to 64' AGL/5983' MSL. OL on pole 4573' from DER, 493' left of centerline, 26' AGL/6045' MSL.

NOTE: Chart not to scale



### DEPARTURE ROUTE DESCRIPTION

**TAKE-OFF RUNWAY 3:** Climbing left turn to 7100 on CEZ R-193 to CEZ VOR/DME. Continue climbing left turn to 8600 on CEZ R-293 to LEDVE/CEZ 7 DME, then climbing left turn to 10200 on CEZ R-293 to CEZ VOR/DME. Cross CEZ VOR/DME at or above 10200 for route of flight. Thence...

**TAKE-OFF RUNWAY 21:** Climbing left turn to 7900 on CEZ R-200 to ODROE/CEZ 17 DME, then climbing left turn to 10200 on CEZ R-200 to CEZ VOR/DME. Cross CEZ VOR/DME at or above 10200 for route of flight. Thence . . . .

. . . .via (transition) or (assigned route).

**CONES TRANSITION (CEZ1.ETL):** From over CEZ VOR/DME via CEZ R-006 and ETL R-188 to ETL VOR/DME.

**BLUE MESA TRANSITION (CEZ1.HBU):** From over CEZ VOR/DME via CEZ R-034 and HBU R-215 to HBU VOR/DME.

# CORTEZ ONE DEPARTURE

SW-1, 07 FEB 2013 to 07 MAR 2013

SW-1, 07 FEB 2013 to 07 MAR 2013