

DEL RIO, TEXAS

12348

VOR/DME RWY 31C

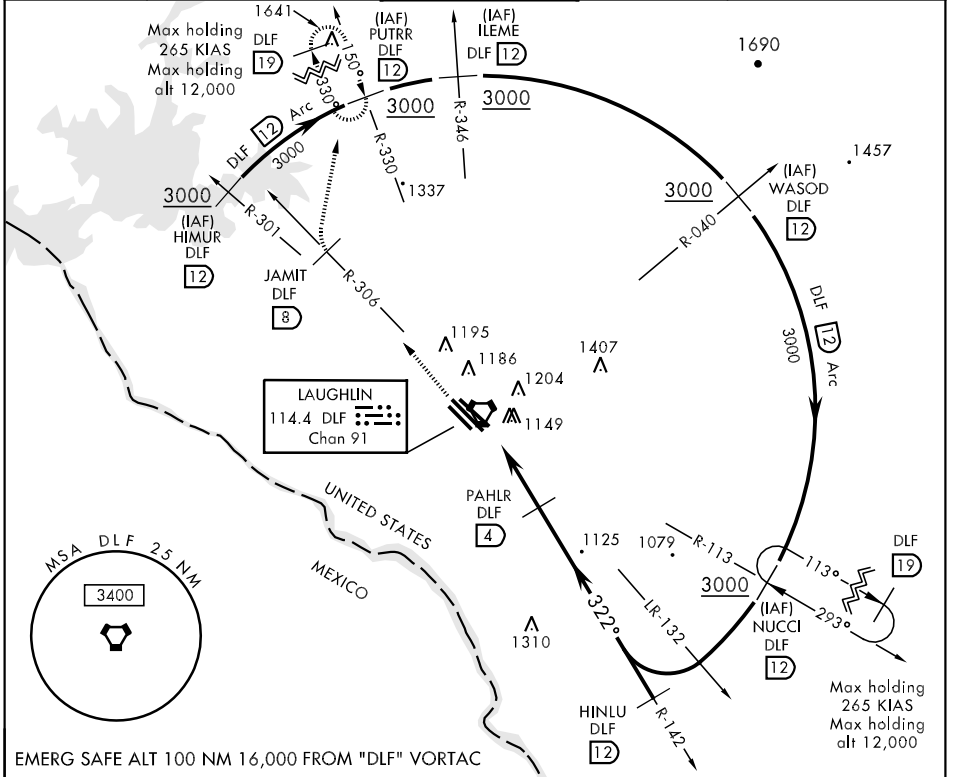
VORTAC DLF 114.4 Chan 91	APCH CRS 322°	Rwy ldg THRE 1067 Arpt Elev 1081
--	-------------------------	--

AL-111 [USAF]

LAUGHLIN AFB (KDLF)

*Circling not authorized in sector SW of Rwy 13R-31L.
 MISSED APPROACH: Climb to 3000 on DLF VORTAC R-306 to 8 DME (JAMIT), then turn right to intercept DLF R-330 to 12 DME (PUTRR), and hold.

ATIS ★ 114.4 269.9	DEL RIO APP CON 119.6 259.1	LAUGHLIN TOWER ★ 125.2 307.375	GND CON 275.8	CLNC DEL 120.5 335.8
------------------------------	---------------------------------------	--	-------------------------	--------------------------------



SC-3, 07 FEB 2013 to 07 MAR 2013

SC-3, 07 FEB 2013 to 07 MAR 2013

EMERG SAFE ALT 100 NM 16,000 FROM "DLF" VORTAC

ELEV 1081	THRE 1067	3000 DLF R-306	JAMIT R-306 DLF 8	PUTRR R-330 DLF 12	HINLU R-142 3000																		
Rwy 31L ldg 6241' MIRL Rwy 13R-31L HIRL Rwy 13C-31C, 13L-31R	<table border="1"> <thead> <tr> <th>CATEGORY</th> <th>A</th> <th>B</th> <th>C</th> <th>D</th> <th>E</th> </tr> </thead> <tbody> <tr> <td>S-31C</td> <td colspan="2">1420-1</td> <td>353</td> <td colspan="2">(400-1)</td> </tr> <tr> <td>CIRCLING *</td> <td>1500-1 419 (500-1)</td> <td>1540-1 459 (500-1)</td> <td>1700-1¾ 619 (700-1¾)</td> <td>1700-2 619 (700-2)</td> <td>1720-2¼ 639 (700-2¼)</td> </tr> </tbody> </table>					CATEGORY	A	B	C	D	E	S-31C	1420-1		353	(400-1)		CIRCLING *	1500-1 419 (500-1)	1540-1 459 (500-1)	1700-1¾ 619 (700-1¾)	1700-2 619 (700-2)	1720-2¼ 639 (700-2¼)
CATEGORY	A	B	C	D	E																		
S-31C	1420-1		353	(400-1)																			
CIRCLING *	1500-1 419 (500-1)	1540-1 459 (500-1)	1700-1¾ 619 (700-1¾)	1700-2 619 (700-2)	1720-2¼ 639 (700-2¼)																		

DEL RIO, TEXAS
Amdt 2 13DEC12

29°22'N-100°47'W

LAUGHLIN AFB (KDLF)

VOR/DME RWY 31C