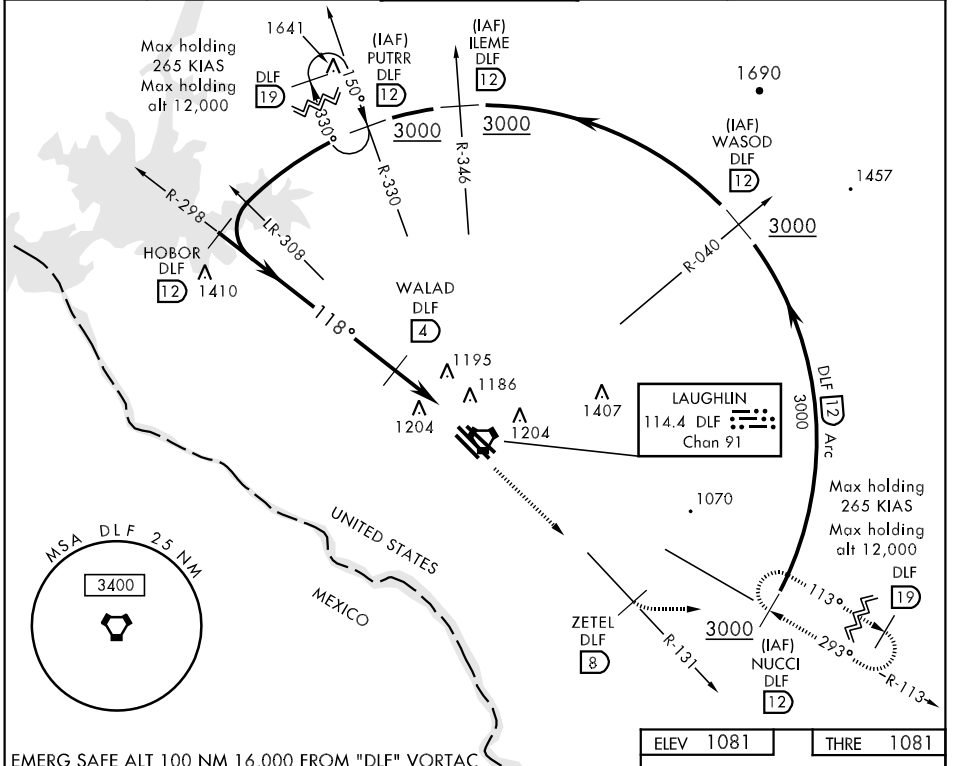
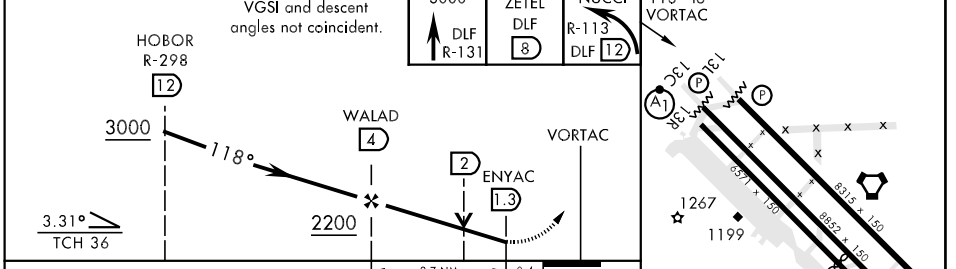


VOR/DME RWY 13C

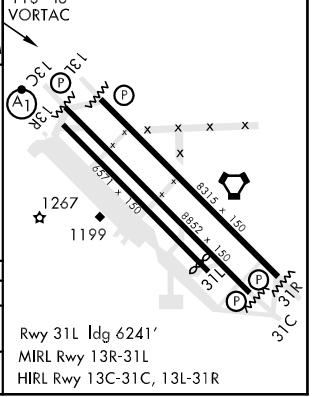
VORTAC DLF 114.4 Chan 91	APCH CRS 118°	Rwy ldg 8852 THRE 1081 Arpt Elev 1081	AL-111 [USAF]	LAUGHLIN AFB (KDLF)
<p>▼* When ALS inop, increase CAT ABC RVR to 50 and vis to 1 mile, CAT D RVR to 60 and vis to 1½ miles, CAT E vis to 1½ miles. ** Circling not authorized in sector SW of Rwy 13R-31L.</p>			ALS-1 (A1)	MISSED APPROACH: Climb to 3000 on DLF VORTAC R-131 to 8 DME (ZETEL), then turn left to intercept DLF R-113 to 12 DME (NUCCI) and hold.
ATIS ★ 114.4 269.9	DEL RIO APP CON 119.6 259.1	LAUGHLIN TOWER ★ 125.2 307.375	GND CON 275.8	CLNC DEL 120.5 335.8



EMERG SAFE ALT 100 NM 16,000 FROM "DLF" VORTAC



CATEGORY	A	B	C	D	E
S-13C *	1480/24 399 (400-½)		1480/40	399	(400-¾)
CIRCLING **	1520-1 439 (500-1)	1540-1 459 (500-1)	1700-1¼ 619 (700-1¼)	1700-2 619 (700-2)	1720-2¼ 639 (700-2¼)



VOR/DME RWY 13C

SC-3, 07 FEB 2013 to 07 MAR 2013

SC-3, 07 FEB 2013 to 07 MAR 2013