

RNAV (GPS) B

APCH CRS 340°	Rwy Idg TDZE Arpt Elev N/A N/A 1081
-------------------------	---

AL-111 [USAF]

LAUGHLIN AFB (KDLF)

▼ * Circling not authorized in sector NE of RWY 13R-31L.
DME/DME RNP-0.3 NA

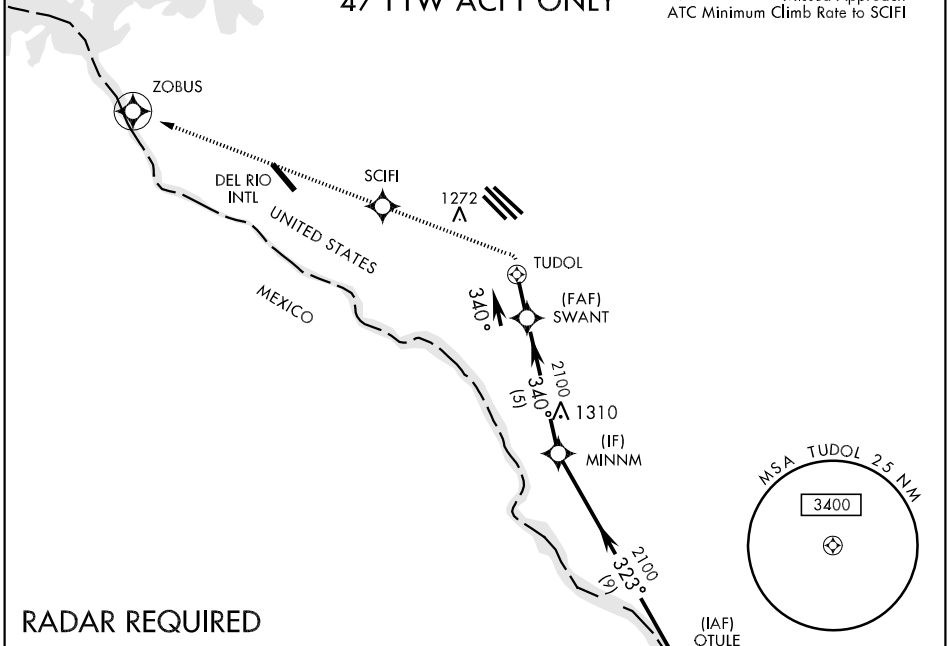
† MISSED APPROACH: Climbing left turn to 4000 direct ZOBUS, cross SCIFI at 4000, expect radar vectors.

ATIS ★ 114.4 269.9	DEL RIO APP CON 127.75 326.2	LAUGHLIN TOWER ★ 125.2 307.375	GND CON 275.8	CLNC DEL 120.5 335.8
------------------------------	--	--	-------------------------	--------------------------------

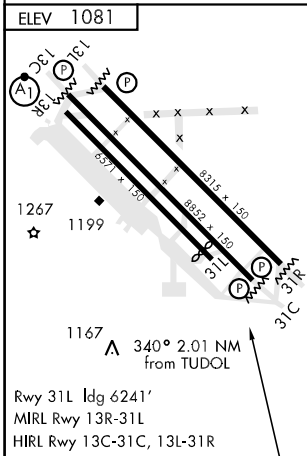
Knots	60	120	180	240
V/V(fpm)	500	1000	1500	2000

FOR USE BY 47 FTW ACFT ONLY

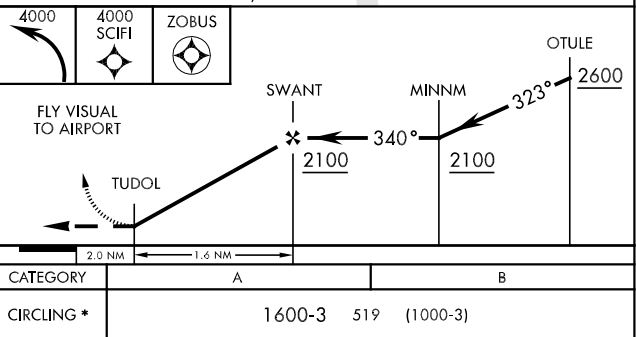
† CAUTION: Missed Approach
ATC Minimum Climb Rate to SCIFI



RADAR REQUIRED



EMERG SAFE ALT 100 NM 16,000 FROM TUDOL



RNAV (GPS) B

SC-3, 07 FEB 2013 to 07 MAR 2013

SC-3, 07 FEB 2013 to 07 MAR 2013