

RNAV (GPS) RWY 13C

APCH CRS 128°	Rwy Idg 13C 8852 13R 6571
	THRE 13C 1081 13R 1076
	Arpt Elev 1081

AL-111 [USAF]

LAUGHLIN AFB (KDLF)

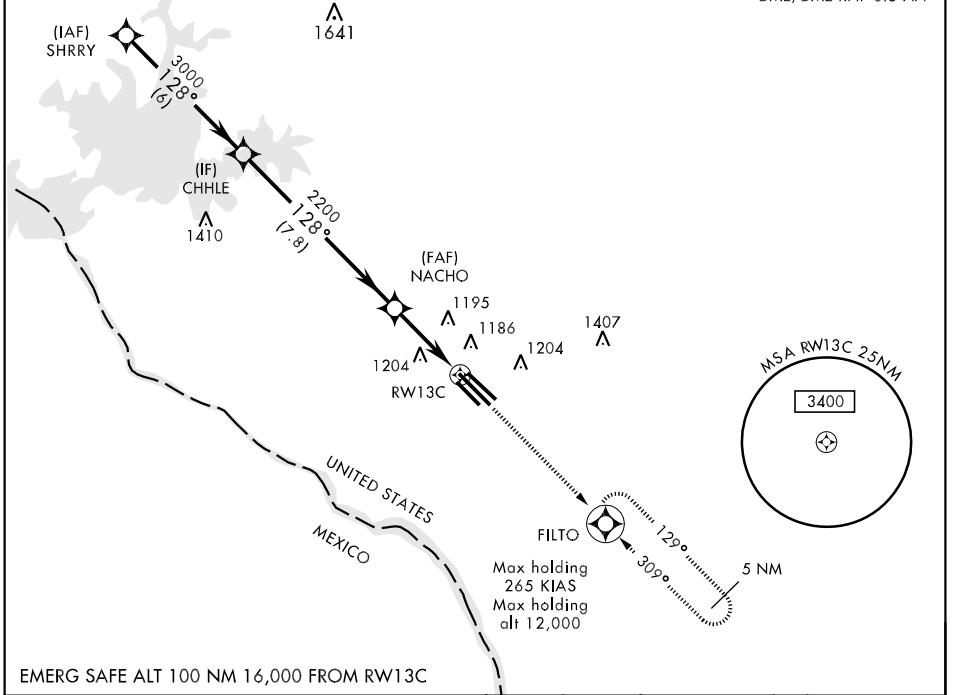
▼ * When ALS inop, increase CAT AB RVR to 55 and vis to 1 mile, CAT CDE RVR to 50 and vis to 1½ miles.
 ** Circling SW of Rwy 13R-31L not authorized.



MISSED APPROACH: Climb to 3000 direct FILTO and hold.

ATIS ★ 114.4 269.9	DEL RIO APP CON 119.6 259.1	LAUGHLIN TOWER ★ 125.2 307.375	GND CON 275.8	CLNC DEL 120.5 335.8
------------------------------	---------------------------------------	--	-------------------------	--------------------------------

DME/DME RNP-0.3 NA



SC-3, 07 FEB 2013 to 07 MAR 2013

SC-3, 07 FEB 2013 to 07 MAR 2013

SHRRY		CHHLE		NACHO		RW13C		FILTO		ELEV 1081	THRE 13C 1081	THRE 13R 1076
3000		3000		2200		1,3 NM to RW13C		3000		128° 3.4 NM from FAF		
CATEGORY	A	B	C	D	E							
LNAV MDA*	1520/24 439 (500-½)		1520/40 439 (500-¾)									
SIDESTEP 13R	1520-1	444 (500-1)	1520-1¾	444 (500-1¾)								
CIRCLING**	1520-1 439 (500-1)	1540-1 459 (500-1)	1700-1¾ 619 (700-1¾)	1700-2 619 (700-2)	1720-2¼ 639 (700-2¼)							
DEL RIO, TEXAS 29°22'N-100°47'W LAUGHLIN AFB (KDLF) Amdt 3 13DEC12												

RNAV (GPS) RWY 13C