

11181

LAUGHLIN ONE DEPARTURE (DLF1 • DLF)

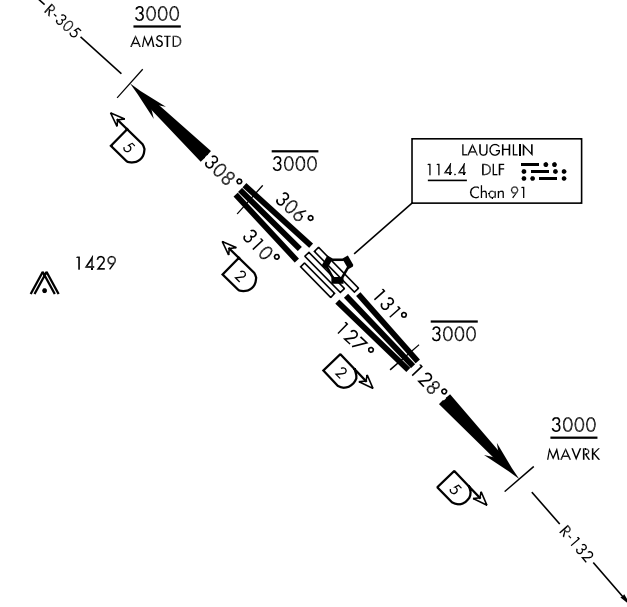
SHL-111 [USAF]

LAUGHLIN AFB (KDLF)
DEL RIO, TEXAS

ATIS ★ 114.4 269.9
 CLNC DEL
 120.5 335.8
 GND CON
 275.8
 LAUGHLIN TOWER ★
 125.2 307.375
 DEL RIO DEP CON
 119.6 296.7

| Rwy | Knots | 60 | 120 | 180 | 240 | 300 | 360 |
|---------|----------|-----|-----|------|------|------|------|
| 31C/R Ⓞ | V/V(fpm) | 470 | 940 | 1410 | 1880 | 2350 | 2810 |
| 13C Ⓞ | V/V(fpm) | 440 | 880 | 1320 | 1760 | 2200 | 2640 |
| 13L Ⓞ | V/V(fpm) | 450 | 890 | 1330 | 1770 | 2210 | 2650 |
| 13R Ⓞ | V/V(fpm) | 410 | 810 | 1210 | 1620 | 2020 | 2420 |

Ⓞ ATC Climb Rate to 5 DME



DEPARTURE ROUTE DESCRIPTION

(MAVRK Tracks)

TAKE-OFF RWY 13C: Climb on track 128°, thence. . .TAKE-OFF RWY 13L: Climb on track 131°, thence. . .TAKE-OFF RWY 13R: Climb on track 127°, thence. . .

Intercept DLF VORTAC R-132 to DLF 5 DME (MAVRK), cross DLF 2 DME at or below 3000, cross DLF 5 DME (MAVRK) at or above 3000, then as directed by ATC.

(AMSTD Tracks)

TAKE-OFF RWY 31C: Climb on track 308°, thence. . .TAKE-OFF RWY 31L: Climb on track 310°, thence. . .TAKE-OFF RWY 31R: Climb on track 306°, thence. . .

Intercept DLF VORTAC R-305 to DLF 5 DME (AMSTD), cross DLF 2 DME at or below 3000, cross DLF 5 DME (AMSTD) at or above 3000, then as directed by ATC.

LAUGHLIN ONE DEPARTURE (DLF1 • DLF)

DEL RIO, TEXAS
LAUGHLIN AFB (KDLF)

SC-3, 07 FEB 2013 to 07 MAR 2013

SC-3, 07 FEB 2013 to 07 MAR 2013