

ILS or LOC/DME RWY 13C

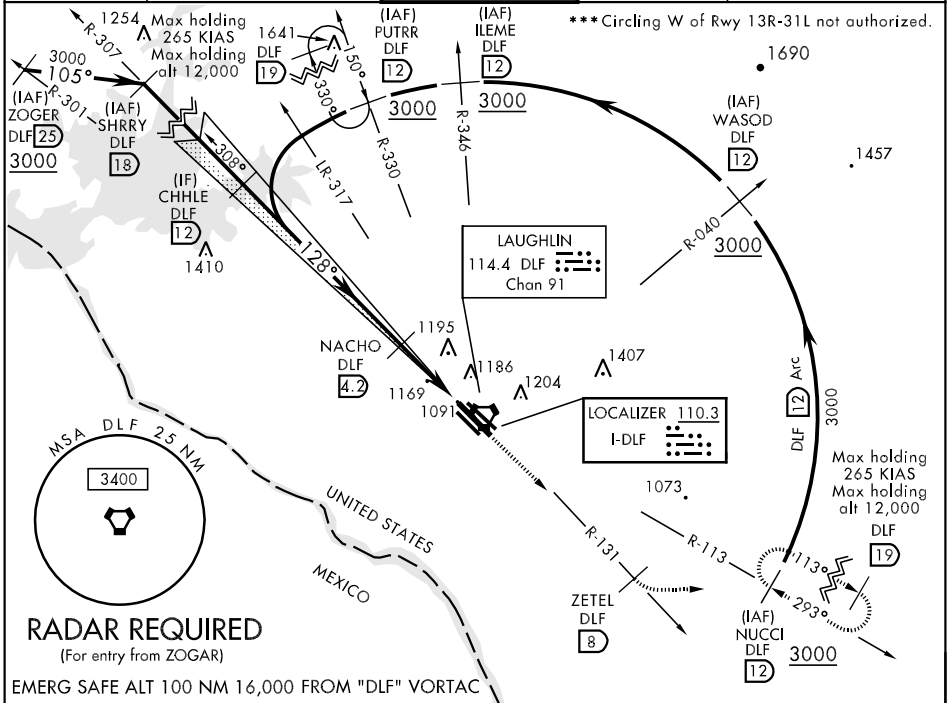
LOC I-DLF 110.3	APCH CRS 128°	Rwy Idg THRE 13C 8852 13L 8315 13C 1081 13L 1078 Arprt Elev 1081	AL-111 [USAF]	LAUGHLIN AFB (KDLF)
---------------------------	-------------------------	--	---------------	---------------------

* When ALS inop, increase RVR to 40 and vis to ¾ mile.
 ** When ALS inop, increase CAT AB RVR to 55 and vis to 1 mile, CAT CDE RVR to 50 and vis to 1 mile.

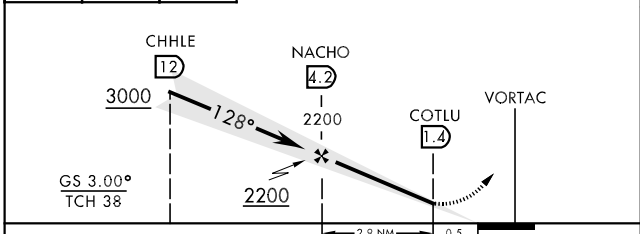
 ALSF-1

 MISSED APPROACH: Climb to 3000 on DLF VORTAC R-131 to 8 DME (ZETEL), then turn left to intercept DLF R-113 to 12 DME (NUCCI) and hold.

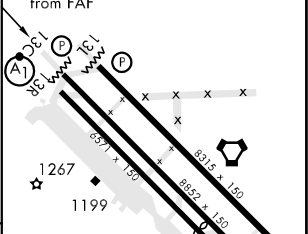
ATIS ★ 114.4 269.9	DEL RIO APP CON 119.6 259.1	LAUGHLIN TOWER ★ 125.2 307.375	GND CON 275.8	CLNC DEL 120.5 335.8
------------------------------	---------------------------------------	--	-------------------------	--------------------------------



3000 DLF R-131	ZETEL DLF R-113 8	NUCCI DLF R-113 12
----------------------	----------------------------	-----------------------------



ELEV 1081	THRE 13C 1081 THRE 13L 1078
-----------	--------------------------------



CATEGORY	A	B	C	D	E
S-ILS 13C *		1281/24	200	(200-½)	
S-LOC 13C **	1420/24 339 (400-½)		1420/26 339 (400-½)		
SIDESTEP 13L		1440-1	362	(400-1)	
CIRCLING ***	1500-1 419 (500-1)	1540-1 459 (500-1)	1700-1¾ 619(700-1¾)	1700-2 619 (700-2)	1720-2½ 639 (700-2½)

Rwy 31L Idg 6241'
 MIRL Rwy 13R-31L
 HIRL Rwy 13C-31C, 13L-31R

ILS or LOC/DME RWY 13C

SC-3, 07 FEB 2013 to 07 MAR 2013

SC-3, 07 FEB 2013 to 07 MAR 2013