

HI-ILS or LOC/DME RWY 31C

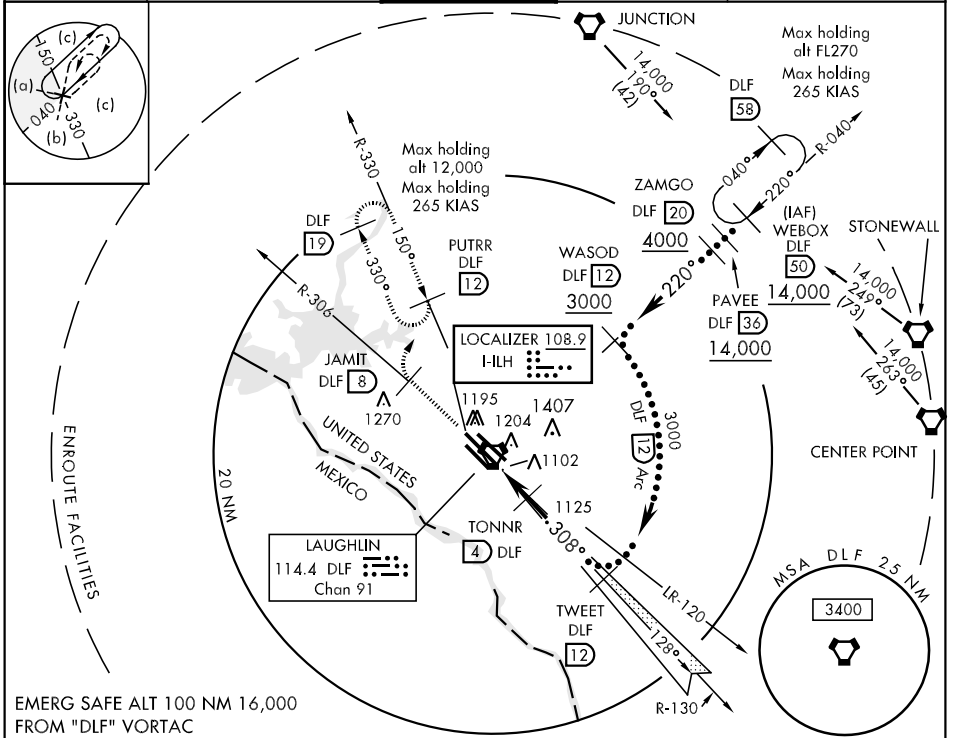
LOC I-LH 108.9	APCH CRS 308°	Rwy Idg THRE Arpt Elev 1081	31C 8852 31R 8315	31R 1067 31R 1063
--------------------------	-------------------------	---------------------------------------------	------------------------------------	------------------------------------

JAL-111 [USAF]

LAUGHLIN AFB (KDLF)

▼ * Circling not authorized in sector SW of Rwy 13R-31L. MISSED APPROACH: Climb to 3000 on DLF VORTAC R-306 to 8 DME (JAMIT), then turn right to intercept DLF R-330 to 12 DME (PUTRR) and hold.

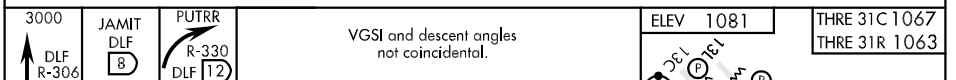
ATIS ★ 114.4 269.9	DEL RIO APP CON 119.6 259.1	LAUGHLIN TOWER ★ 125.2 307.375	GND CON 275.8	CLNC DEL 120.5 335.8
------------------------------	---------------------------------------	------------------------------------------	-------------------------	--------------------------------



SC-3, 07 FEB 2013 to 07 MAR 2013

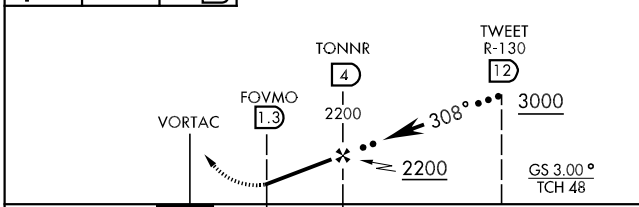
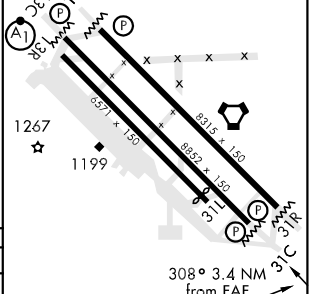
SC-3, 07 FEB 2013 to 07 MAR 2013

EMERG SAFE ALT 100 NM 16,000
FROM "DLF" VORTAC



VGSI and descent angles not coincidental.

ELEV 1081	THRE 31C 1067
	THRE 31R 1063



CATEGORY	A	B	C	D	E
S-ILS 31C	1317-3/4		250	(300-3/4)	
S-LOC 31C	1380-1	313 (300-1)	1380-7/8		313 (300-7/8)
SIDESTEP 31R	1380-1	317 (300-1)	1380-7/8		317 (300-7/8)
CIRCLING *	1500-1	1540-1	1700-1 3/4	1700-2	1720-2 1/4
	419 (500-1)	459 (500-1)	619(700-1 3/4)	619 (700-2)	639(700-2 1/4)

Rwy 31L Idg 6241'
MIRL Rwy 13R-31L
HIRL Rwy 13C-31C, 13L-31R

HI-ILS or LOC/DME RWY 31C