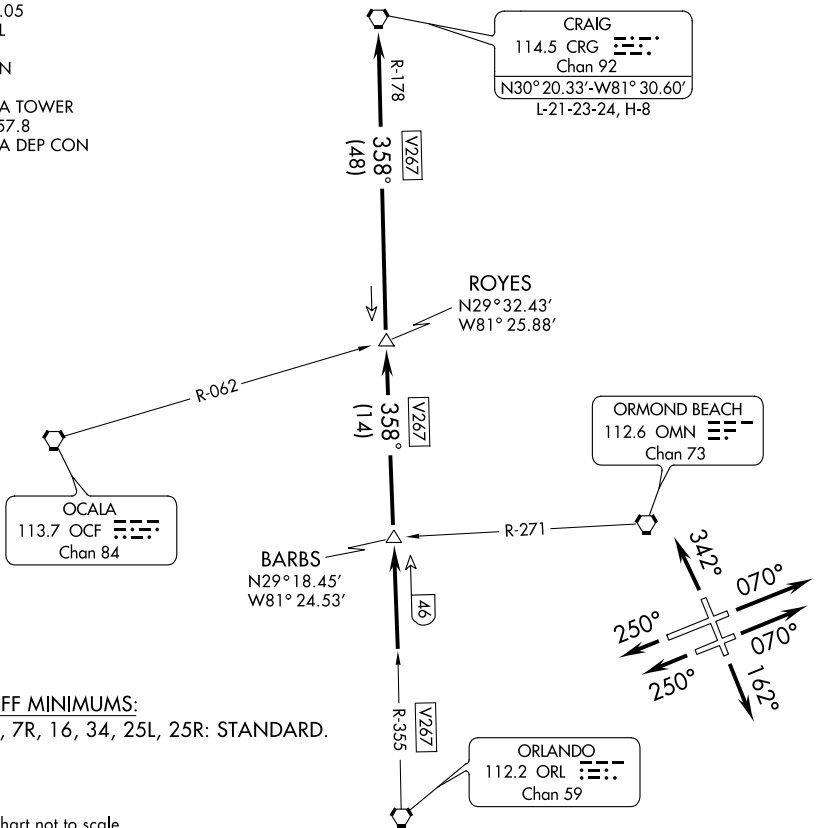


# ROYES FIVE DEPARTURE

SL-110 (FAA)

DAYTONA BEACH INTL (DAB)  
DAYTONA BEACH, FLORIDA

ATIS 120.05  
CLNC DEL  
119.3  
GND CON  
121.9  
DAYTONA TOWER  
120.7 257.8  
DAYTONA DEP CON  
123.9



**TAKEOFF MINIMUMS:**  
Rwy 7L, 7R, 16, 34, 25L, 25R: STANDARD.

NOTE: Chart not to scale.

## DEPARTURE ROUTE DESCRIPTION

**TAKEOFF RUNWAY 7L:** Climb heading 070° to 5000 or as assigned by ATC.

Thence . . . .

**TAKEOFF RUNWAY 7R:** Climb heading 070° to 5000 or as assigned by ATC.

Thence . . . .

**TAKEOFF RUNWAY 16:** Climb heading 162° to 5000 or as assigned by ATC.

Thence . . . .

**TAKEOFF RUNWAY 25R:** Climb heading 250° to 5000 or as assigned by ATC.

Thence . . . .

**TAKEOFF RUNWAY 25L:** Climb heading 250° to 5000 or as assigned by ATC.

Thence . . . .

**TAKEOFF RUNWAY 34:** Climb heading 342° to 5000 or as assigned by ATC.

Thence . . . .

. . . . Expect vectors to intercept CRG R-178 to CRG VORTAC. Then via assigned route expect clearance to filed altitude/flight level ten (10) minutes after departure.

# ROYES FIVE DEPARTURE